

APP CRS 212°	Rwy Ldg TDZE Apt Elev	7669 1507 1510
------------------------	-----------------------------	---

RNAV (RNP) RWY 21

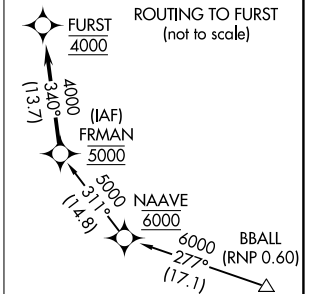
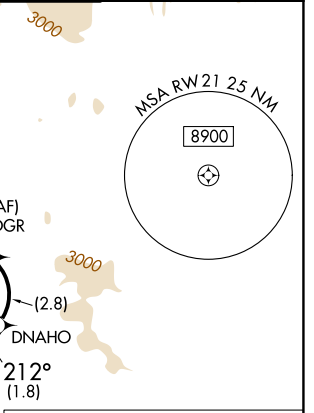
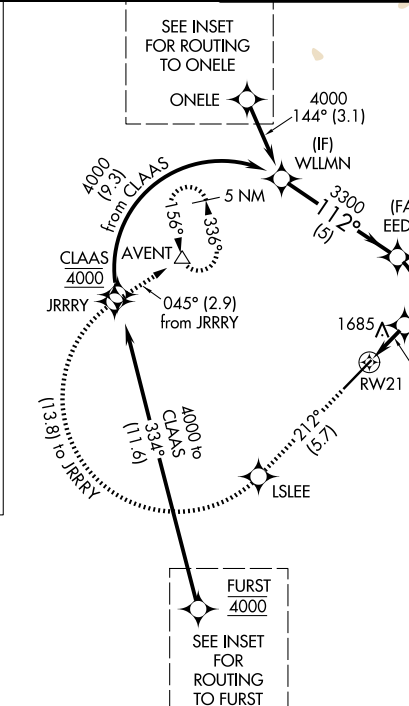
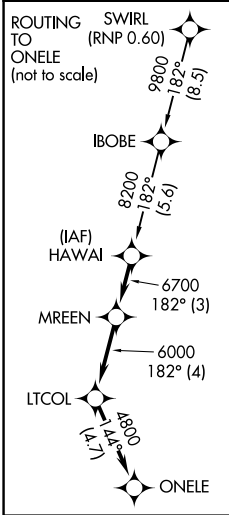
SCOTTSDALE (SDL)

RNP AR APCH - GPS, RF, min RNP 0.60. Authorization required.

▼ For uncompensated Baro-VNAV systems, procedure NA below 1°C or above 54°C. When local altimeter setting not received procedure NA.

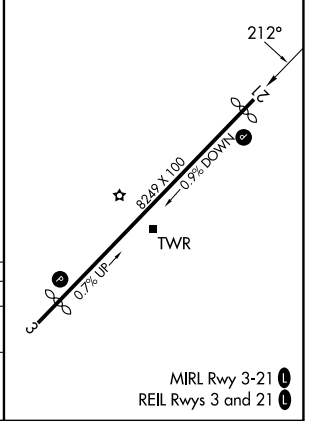
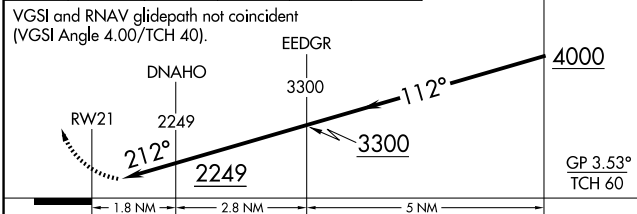
MISSED APPROACH: Climb to 5000 on track 212° to LSLEE and right turn to JRRRY and on track 045° to AVENT and hold.

ATIS 118.6	PHOENIX APP CON 120.7 239.0	SCOTTSDALE TOWER* 119.9 (CTAF) 0	GND CON 121.6
----------------------	---------------------------------------	--	-------------------------



5000	LSLEE	JRRRY	AVENT
↑ tr 212°	✧	✧	△
	↷		
		tr 045°	

ELEV 1510	D	TDZE 1507
-----------	---	-----------



CATEGORY	A	B	C	D
RNP 0.16 DA	1993-1 3/8	486 (500-1 3/8)		NA

AUTHORIZATION REQUIRED

MIRL Rwy 3-21 0
REIL Rws 3 and 21 0

SW-4, 11 JUN 2026 to 09 JUL 2026

SW-4, 11 JUN 2026 to 09 JUL 2026