

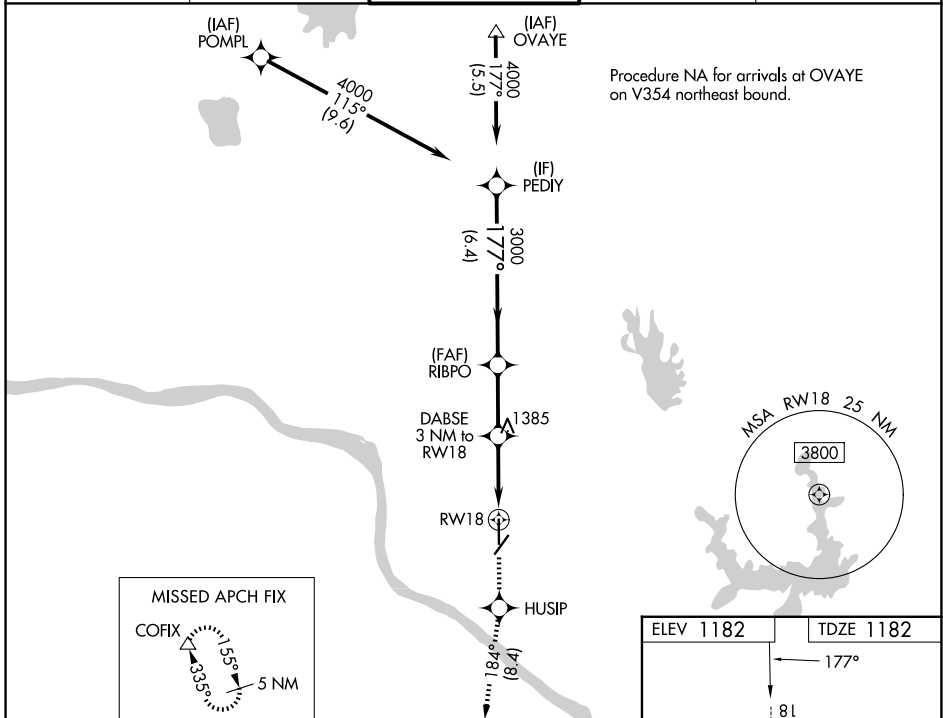
WAAS CH 58302 W18A	APP CRS 177°	Rwy Ldg 5199 TDZE 1182 Apt Elev 1182
--	------------------------	---

RNAV (GPS) RWY 18

UNIVERSITY OF OKLAHOMA WESTHEIMER (OUN)

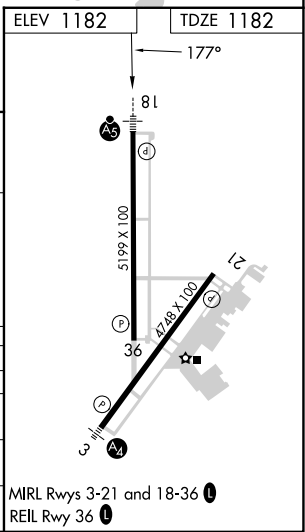
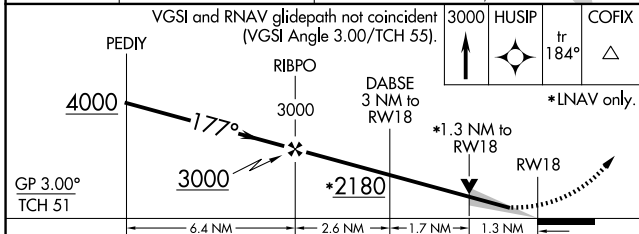
RNP APCH.	MALSR	MISSED APPROACH: Climb to 3000 direct HUSIP and track 184° to COFIX and hold.
<p>▼ For uncompensated Baro-VNAV systems, LNAV/VNAV NA below -17°C or above 54°C. For inop ALS, increase LNAV/VNAV all Cats visibility to ½ SM. Circling NA southeast of Rwy 3-21.</p>		

AWOS-3PT 119.55	OKE CITY APP CON 120.45 288.325	WESTHEIMER TOWER ★ 118.0 (CTAF) 0	GND CON 121.6	UNICOM 122.95
---------------------------	---	---	-------------------------	-------------------------



SC-1, 11 JUN 2026 to 09 JUL 2026

SC-1, 11 JUN 2026 to 09 JUL 2026



CATEGORY	A	B	C	D
LPV DA		1382-½	200 (200-½)	
LNAV/DA VNAV		1490-½	308 (400-½)	
LNAV MDA	1640-½	458 (500-½)	1640-⅞	458 (500-⅞)
CIRCLING	1660-1	478 (500-1)	1940-2¼ 758 (800-2¼)	1940-2½ 758 (800-2½)