

WAAS CH <b>77531</b> <b>W03A</b>	APP CRS <b>033°</b>	Rwy Ldg <b>4748</b> TDZE <b>1177</b> Apt Elev <b>1182</b>
--	------------------------	---

# RNAV (GPS) RWY 3

UNIVERSITY OF OKLAHOMA WESTHEIMER (OUN)

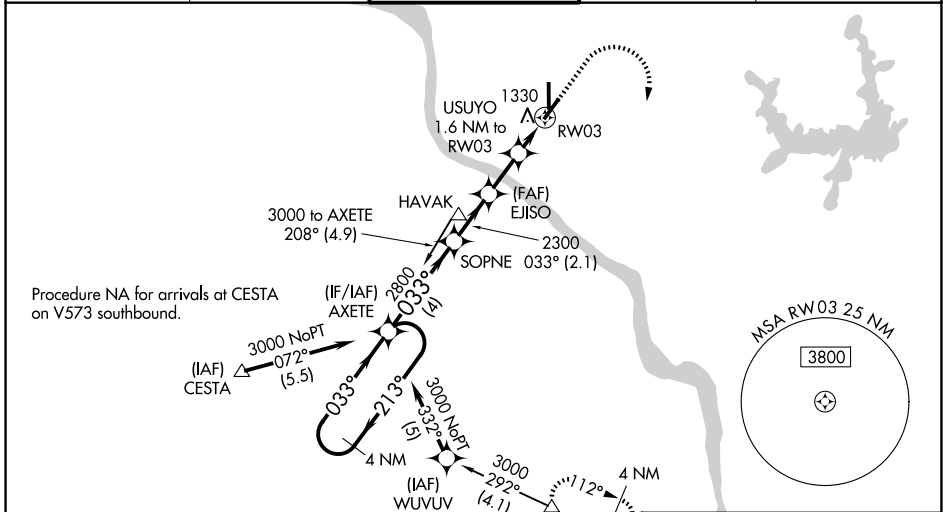
**⚠** Baro-VNAV NA when using Will Rogers World altimeter setting. For uncompensated Baro-VNAV systems, LNAV/VNAV NA below -17°C (2°F) or above 54°C (130°F).  
**⚠** DME/DME RNP-0.3 NA. When local altimeter setting not received, use OKC Will Rogers Intl altimeter setting and increase LPV DA to 1501 feet, LNAV/VNAV DA to 1544 feet; increase all MDA 60 feet, increase LPV visibility to 7/8 mile all Cats, increase LNAV/VNAV visibility to 1 mile all Cats, and increase LNAV Cat C/D visibility to 1 1/8 mile. For inop MALS, increase LPV all Cats visibility to 1 mile, LNAV/VNAV Cat D visibility to 1 1/8 mile, LNAV Cat C/D visibility to 1 1/8 mile. For inop MALS when using OKC Will Rogers Intl altimeter setting, increase LPV all Cats visibility to 1 1/8 mile, LNAV/VNAV Cat D visibility to 1 1/4 mile, LNAV Cat D visibility to 1 1/8 mile. Circling NA southeast of Rwy 3 and 21.

MALS

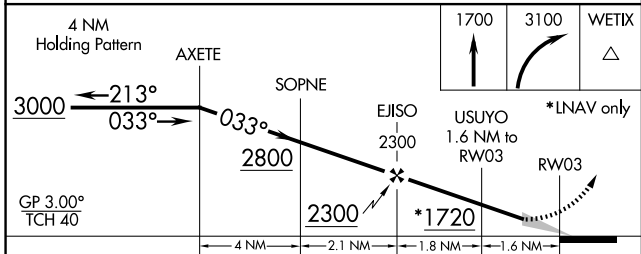


**MISSED APPROACH:**  
Climb to 1700 then climbing right turn to 3100 direct WETIX and hold.

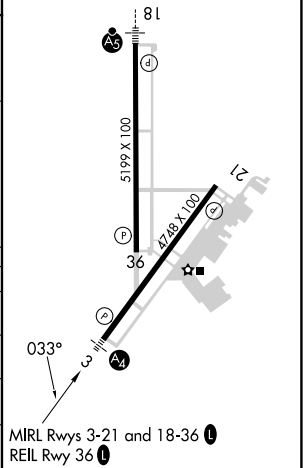
AWOS-3PT <b>119.55</b>	OKE CITY APP CON <b>120.45 288.325</b>	<b>WESTHEIMER TOWER*</b> <b>118.0 (CTAF) 0</b>	GND CON <b>121.6</b>	UNICOM <b>122.95</b>
---------------------------	---	---	-------------------------	-------------------------



ELEV 1182	TDZE 1177
-----------	-----------



CATEGORY	A	B	C	D
LPV DA		1460-3/4	283 (300-3/4)	
LNAV/VNAV DA		1503-7/8	326 (400-7/8)	
LNAV MDA	1580-3/4	403 (400-3/4)	1580-1	403 (400-1)
CIRCLING	1660-1	478 (500-1)	1940-2 1/4 758 (800-2 1/4)	1940-2 1/2 758 (800-2 1/2)



SC-1, 11 JUN 2026 to 09 JUL 2026

SC-1, 11 JUN 2026 to 09 JUL 2026