

WAAS CH <b>82729</b> <b>W36A</b>	APP CRS <b>357°</b>	Rwy Ldg TDZE <b>1182</b> Apt Elev <b>1182</b>	<b>5199</b>
--	------------------------	---	-------------

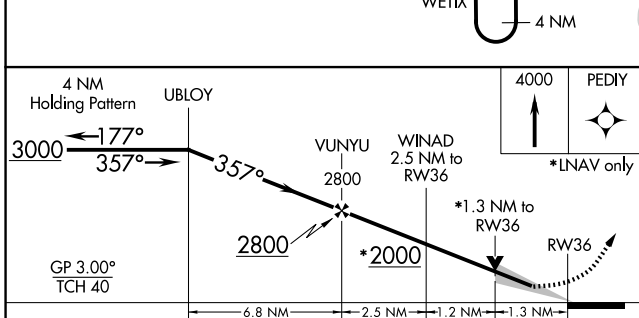
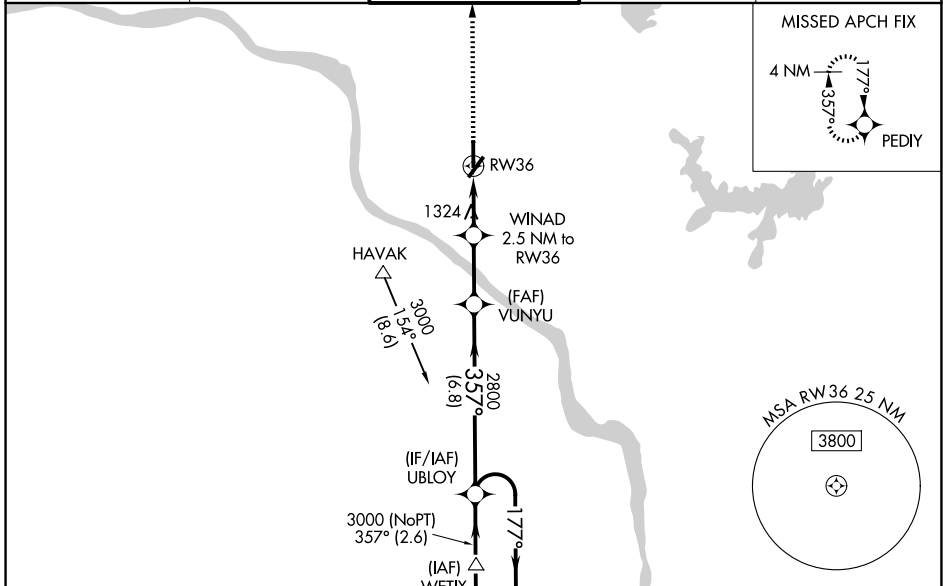
# RNAV (GPS) RWY 36

UNIVERSITY OF OKLAHOMA WESTHEIMER (OUN)

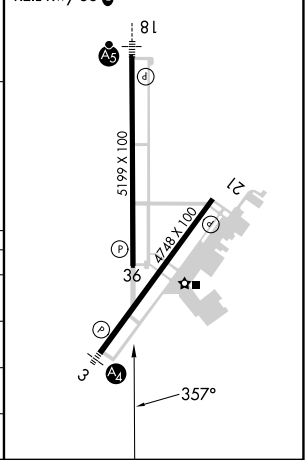
**⚠** For uncompensated Baro-VNAV systems, procedure NA below -17°C (2°F) or above 54°C (130°F). Baro-VNAV and VDP NA when using OKC Will Rogers Intl altimeter setting. DME/DME RNP-0.3 NA. When local altimeter setting not received, use OKC Will Rogers Intl altimeter setting and increase LPV DA to 1473 feet, LNAV/VNAV DA to 1541 feet; increase all MDA 60 feet, increase LPV visibility all Cats to 1 mile, LNAV/VNAV visibility all Cats to 1¼ mile, and increase Circling Cat C/D visibility ¼ mile. Circling NA southeast of Rwy 3 and 21.

**MISSED APPROACH:**  
Climb to 4000 direct PEDIY and hold.

AWOS-3PT <b>119.55</b>	OKE CITY APP CON <b>120.45 288.325</b>	WESTHEIMER TOWER * <b>118.0 (CTAF) 0</b>	GND CON <b>121.6</b>	UNICOM <b>122.95</b>
---------------------------	---	---	-------------------------	-------------------------



ELEV 1182	TDZE 1182
MIRL Rwy 3-21 and 18-36 0	REIL Rwy 36 0



CATEGORY	A	B	C	D
LPV DA		1432-7/8	250 (300-7/8)	
LNAV/VNAV DA		1500-11/8	318 (400-11/8)	
LNAV MDA	1640-1	458 (500-1)	1640-13/8	458 (500-13/8)
CIRCLING	1660-1	478 (500-1)	1940-21/4	1940-21/2
			758 (800-21/4)	758 (800-21/2)

SC-1, 11 JUN 2026 to 09 JUL 2026

SC-1, 11 JUN 2026 to 09 JUL 2026