

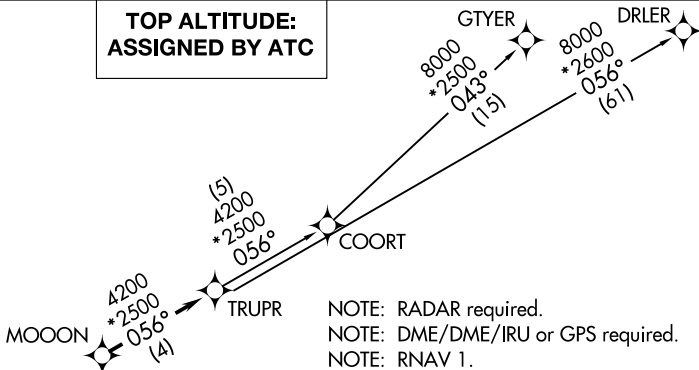
(TRUPR3.TRUPR) 23166

# TRUPR THREE DEPARTURE (RNAV)

UNIVERSITY OF OKLAHOMA WESTHEIMER (OUN)  
AL-5672 (FAA) NORMAN, OKLAHOMA

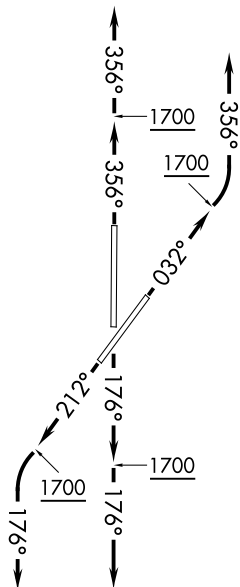
AWOS-3PT  
119.55  
GND CON  
121.6  
WESTHEIMER TOWER \*  
118.0  
OKE CITY DEP CON  
120.45 288.325

**TOP ALTITUDE:  
ASSIGNED BY ATC**



### TAKEOFF MINIMUMS

Rwys 3, 18, 21, 36: Standard with minimum climb of 500' per NM to 1700.



NOTE: Chart not to scale.

### DEPARTURE ROUTE DESCRIPTION

**TAKEOFF RUNWAY 3:** Climb on heading 032° to 1700, then left turn heading 356° or as assigned by ATC, expect RADAR vectors to MOOON, thence . . . .

**TAKEOFF RUNWAY 18:** Climb on heading 176° to 1700, then heading 176° or as assigned by ATC, expect RADAR vectors to MOOON, thence . . . .

**TAKEOFF RUNWAY 21:** Climb on heading 212° to 1700, then left turn heading 176° or as assigned by ATC, expect RADAR vectors to MOOON, thence . . . .

**TAKEOFF RUNWAY 36:** Climb on heading 356° to 1700, then heading 356° or as assigned by ATC, expect RADAR vectors to MOOON, thence . . . .

. . . . on track 056° to TRUPR, then on (transition). Maintain 3000 or as assigned by ATC. Expect filed altitude 10 minutes after departure.

COORT TRANSITION (TRUPR3.COORT)  
DRLER TRANSITION (TRUPR3.DRLER)  
GTYER TRANSITION (TRUPR3.GTYER)

# TRUPR THREE DEPARTURE (RNAV)

(TRUPR3.TRUPR) 07DEC17

NORMAN, OKLAHOMA  
UNIVERSITY OF OKLAHOMA WESTHEIMER (OUN)

SC-1, 11 JUN 2026 to 09 JUL 2026

SC-1, 11 JUN 2026 to 09 JUL 2026