

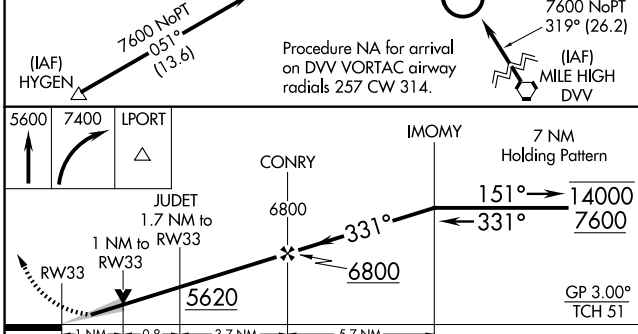
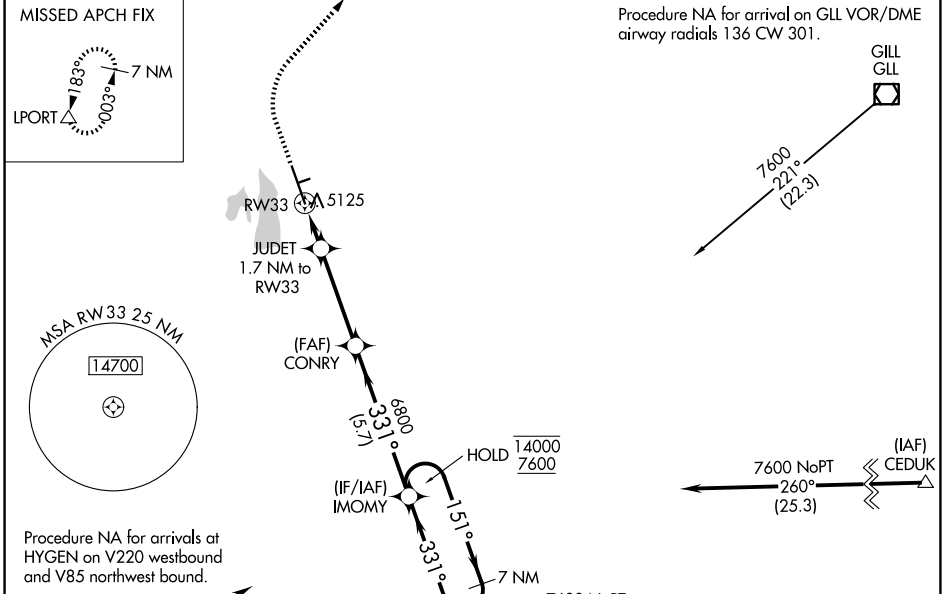
WAAS CH <b>97511</b> <b>W33A</b>	APP CRS <b>331°</b>	Rwy Ldg <b>8500</b> TDZE <b>5020</b> Apt Elev <b>5020</b>
--	------------------------	--

# RNAV (GPS) RWY 33

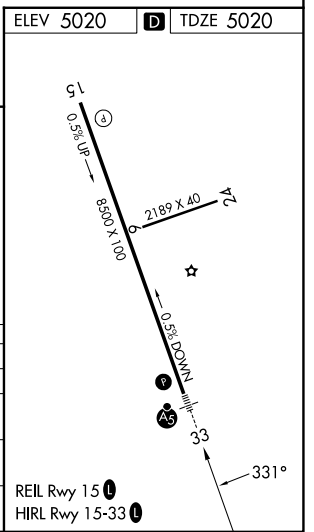
NORTHERN COLORADO RGNL (FNL)

RNP APCH-GPS.	MALSR 	MISSED APPROACH: Climb to 5600, then climbing right turn to 7400 direct LPORT and hold.
<p><b>⚠</b> Circling Rwy 24 NA at night. For uncompensated Baro-VNAV systems, LNAV/VNAV NA below -24°C or above 54°C. For inop ALS, increase LNAV/VNAV all Cats visibility to 3/8 SM and LNAV visibility Cat C/D to 1 SM.</p>		

ATIS <b>135,075</b>	DENVER APP CON <b>134.85 251.125</b>	NOCO TOWER* <b>118.4 (CTAF) 0</b>	GND CON <b>121.65</b>
------------------------	---	--------------------------------------	--------------------------



CATEGORY	A	B	C	D
LPV DA		5220-1/2	200 (200-1/2)	
LNAV/VNAV DA		5329-1/2	309 (400-1/2)	
LNAV MDA	5380-1/2	360 (400-1/2)	5380-5/8	360 (400-5/8)
CIRCLING	5480-1 460 (500-1)	5520-1 500 (500-1)	5520-1 1/2 500 (500-1 1/2)	5700-2 1/4 680 (700-2 1/4)



SW-1, 11 JUN 2026 to 09 JUL 2026

SW-1, 11 JUN 2026 to 09 JUL 2026