

ROCKIES SEVEN DEPARTURE
(ROCK17.DEN) 12JUN25

(ROCK17.DEN) 25163
ROCKIES SEVEN DEPARTURE

AL-5677 (FAA)

NORTHERN COLORADO RGNL (FNL)
FORT COLLINS/LOVELAND, COLORADO

DENVER DEP CON
134.85 251.125
CLNC DEL
120.25 (when tower closed)

RADAR required.

**TOP ALTITUDE:
ASSIGNED BY ATC**

GILL
114.2 GLL : : : :
Chan 89

MEEKER
115.2 EKR : : : -
Chan 99

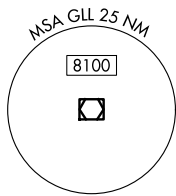
KREMLING
113.8 RLG : : : :
Chan 85

RIFLE
113.35 RIL : : : :
Chan 80(Y)

RED TABLE
113.0 DBL : : : :
Chan 77

MONTROSE
117.1 MTJ : : : -
Chan 118

DOVE CREEK
114.6 DVC : : : :
Chan 93

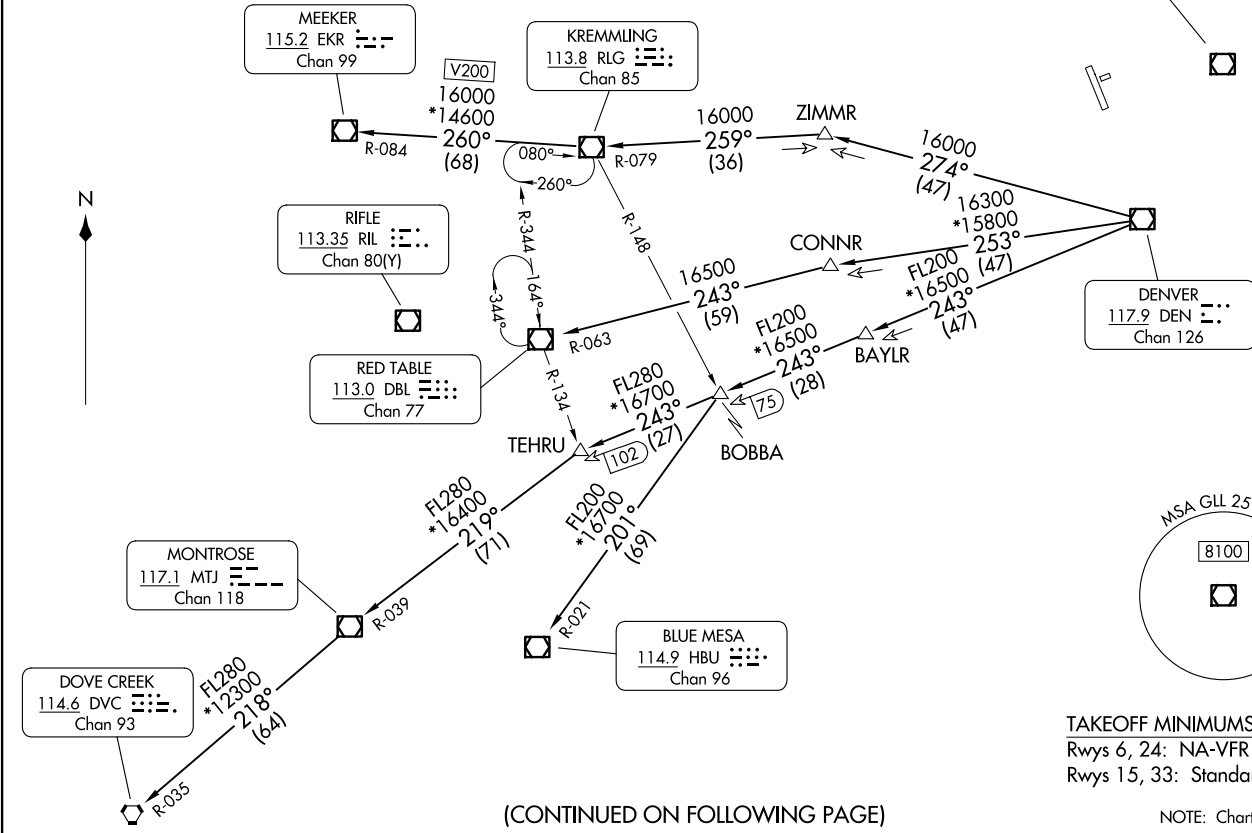


TAKEOFF MINIMUMS
Rwys 6, 24: NA-VFR Runway.
Rwys 15, 33: Standard.

NOTE: Chart not to scale.

(CONTINUED ON FOLLOWING PAGE)

FORT COLLINS/LOVELAND, COLORADO
NORTHERN COLORADO RGNL (FNL)





DEPARTURE ROUTE DESCRIPTION

TAKEOFF RUNWAY 15: Climb to assigned altitude and heading between 180° CCW 350° from end of runway, thence. . . .

TAKEOFF RUNWAY 33: Climbing right turn to assigned altitude and heading between 350° CW 150° from DER, thence. . . .

. . . .RADAR vectors to assigned route. Expect filed altitude 10 minutes after departure.

LOST COMMUNICATIONS: If no transmissions are received within one minute after departure, maintain assigned heading until 7000, then climb to filed altitude direct to DEN VOR/DME, then on assigned route. If filed altitude is above 10000, cross DEN VOR/DME at or above 11000.

BLUE MESA TRANSITION (ROCKI7.HBU): From over DEN VOR/DME on DEN R-243 and HBU R-021 to HBU VOR/DME.

DOVE CREEK TRANSITION (ROCKI7.DVC): From over DEN VOR/DME on DEN R-243 and MTJ R-039 to MTJ VOR/DME, then on MTJ R-218 and DVC R-035 to DVC VORTAC.

KREMMLING TRANSITION (ROCKI7.RLG): From over DEN VOR/DME on DEN R-274 and RLG R-079 to RLG VOR/DME.

MEEKER TRANSITION (ROCKI7.EKR): From over DEN VOR/DME on DEN R-274 and RLG R-079 to RLG VOR/DME, then on RLG R-260 and EKR R-084 to EKR VOR/DME.

MONTROSE TRANSITION (ROCKI7.MTJ): From over DEN VOR/DME on DEN R-243 and MTJ R-039 to MTJ VOR/DME.

RED TABLE TRANSITION (ROCKI7.DBL): From over DEN VOR/DME on DEN R-253 and DBL R-063 to DBL VOR/DME.

SW-1, 11 JUN 2026 to 09 JUL 2026

SW-1, 11 JUN 2026 to 09 JUL 2026