

WAAS CH <b>99435</b> <b>W10A</b>	APP CRS <b>105°</b>	Rwy Ldg TDZE Apt Elev	<b>6453</b> <b>968</b> <b>968</b>
--	------------------------	-----------------------------	---

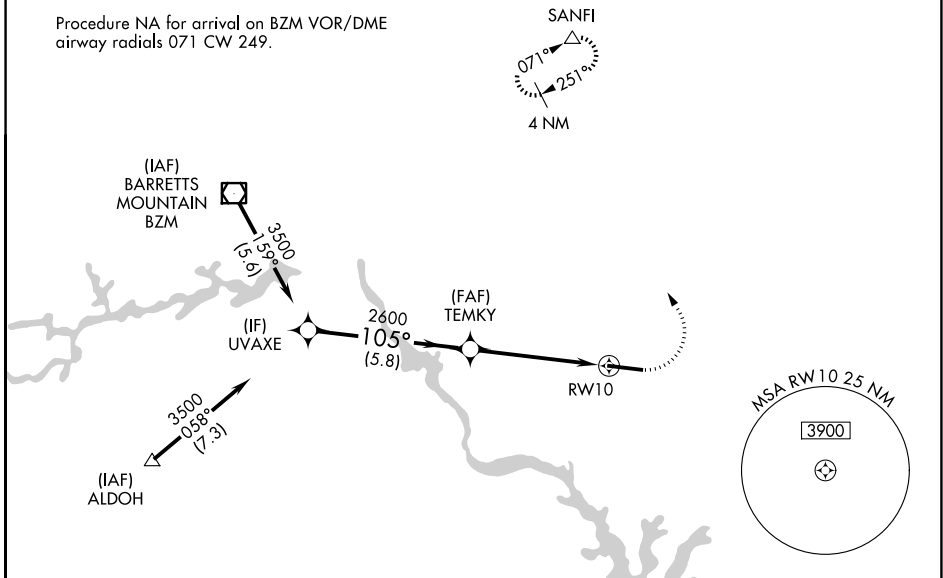
# RNAV (GPS) RWY 10

STATESVILLE RGNL (SVH)

RNP APCH - GPS.		MISSED APPROACH: Climb to 1440 then climbing left turn to 3400 direct SANFI and hold.
<p>▼ For uncompensated Baro-VNAV systems, LNAV/VNAV NA below -16°C or above 54°C.</p> <p>▲</p>		

AWOS-3 <b>119.225</b>	ATLANTA CENTER <b>125.15 263.0</b>	UNICOM <b>123.075 (CTAF)</b>
--------------------------	---------------------------------------	---------------------------------

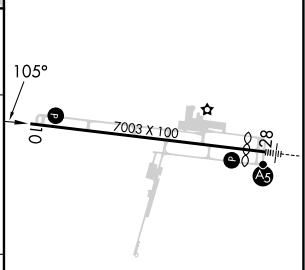
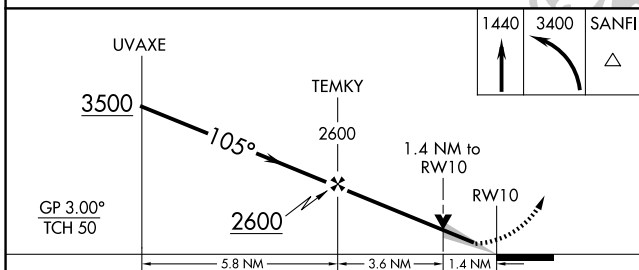
Procedure NA for arrival on BZM VOR/DME airway radials 071 CW 249.



SE-2, 11 JUN 2026 to 09 JUL 2026

SE-2, 11 JUN 2026 to 09 JUL 2026

ELEV 968		TDZE 968
----------	--	----------



CATEGORY	A	B	C	D
LPV DA		1218-3/4	250 (300-3/4)	
LNAV/VNAV DA		1479-1 3/8	511 (600-1 3/8)	
LNAV MDA	1440-1	472 (500-1)	1440-1 3/8	472 (500-1 3/8)
CIRCLING	1440-1 472 (500-1)	1540-1 572 (600-1)	1540-1 1/2 572 (600-1 1/2)	1560-2 592 (600-2)

REIL Rwy 10   
HIRL Rwy 10-28