

# RNAV (GPS) RWY 28

LAKELAND/NOBLE F LEE MEML FLD (A.R.V)

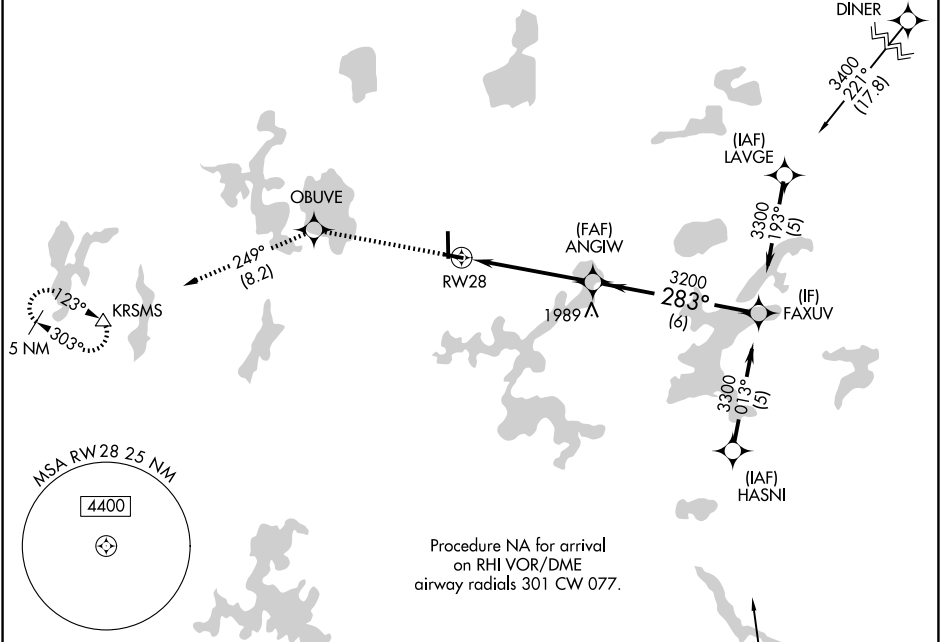
APP CRS	Rwy Ldg	<b>3602</b>
<b>283°</b>	TDZE	<b>1625</b>
	Apt Elev	<b>1630</b>

RNP APCH.

**▼** Rwy 28 helicopter visibility reduction below 1 SM NA.  
**▲** Straight-in and Circling Rwy 28 NA at night, Circling Rwy 10 NA at night.

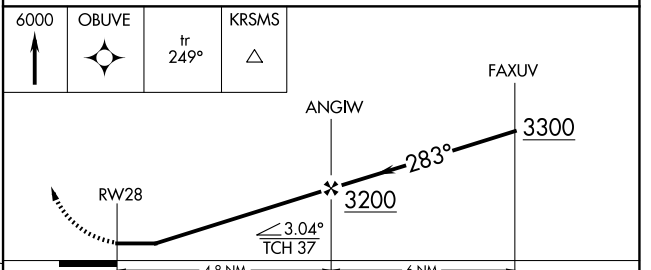
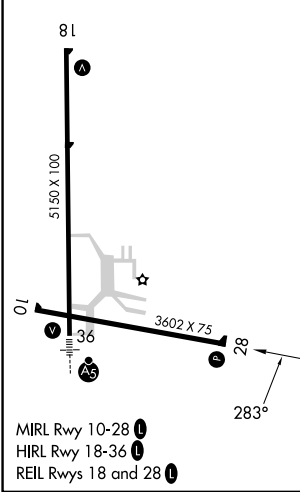
MISSED APPROACH: Climb to 6000 direct OBUVE and on track 249° to KRSMS and hold.

AWOS-3PT <b>121.125</b>	MINNEAPOLIS CENTER <b>133.65 281.5</b>	UNICOM <b>122.7</b> (CTAF) <b>📻</b>
----------------------------	---	--



Procedure NA for arrival on RHI VOR/DME airway radials 301 CW 077.

ELEV 1630	TDZE 1625
-----------	-----------



CATEGORY	A	B	C	D
LNAV MDA	2140-1	515 (600-1)	2140-1½ 515 (600-1½)	2140-1¾ 515 (600-1¾)
CIRCLING	2140-1 510 (600-1)	2200-1 570 (600-1)	2200-1½ 570 (600-1½)	2220-2 590 (600-2)

EC-3, 11 JUN 2026 to 09 JUL 2026

EC-3, 11 JUN 2026 to 09 JUL 2026