

WAAS CH 49115 W36A	APP CRS 001°	Rwy Ldg TDZE Apt Elev	5150 1627 1630
--	------------------------	-----------------------------	---

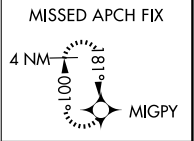
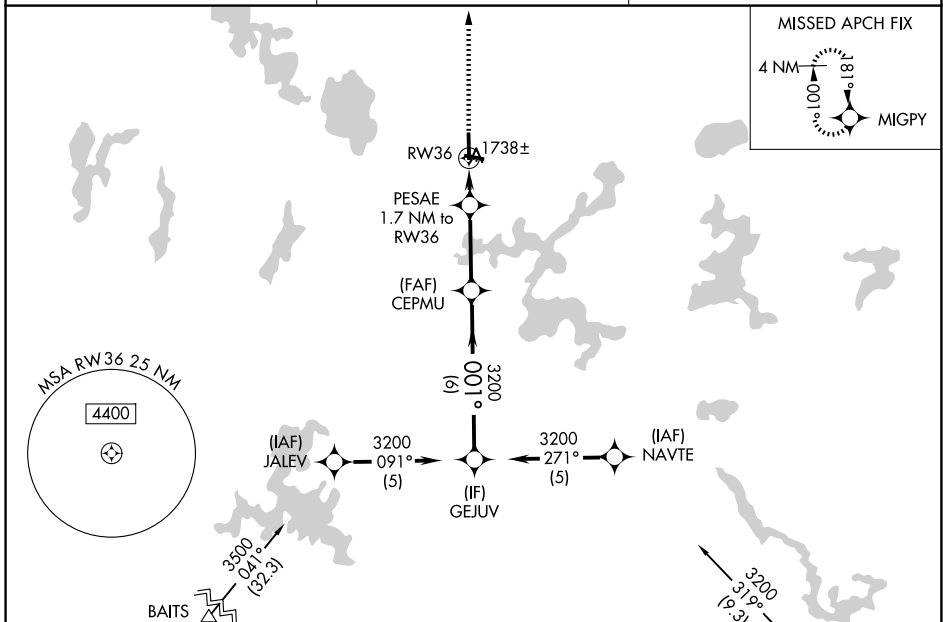
RNAV (GPS) RWY 36

LAKELAND/NOBLE F LEE MEML FLD (A.R.V)

RNP APCH.	MALSRL A5	MISSED APPROACH: Climb to 3300 direct MIGPY and hold.
-----------	--------------	---

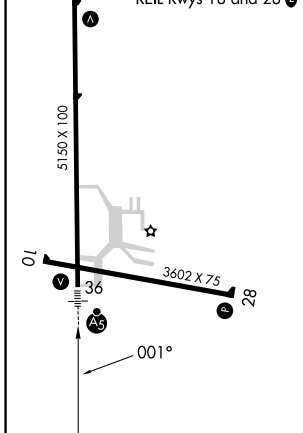
⚠ Circling Rwy 10, 28 NA at night. Rwy 36 helicopter visibility reduction below ¾ SM NA.
⚠ Inop table does not apply. For uncompensated Baro-VNAV systems, LNAV/VNAV NA below -18°C or above 54°C.

AWOS-3PT 121.125	MINNEAPOLIS CENTER 133.65 281.5	UNICOM 122.7 (CTAF)
----------------------------	---	-------------------------------

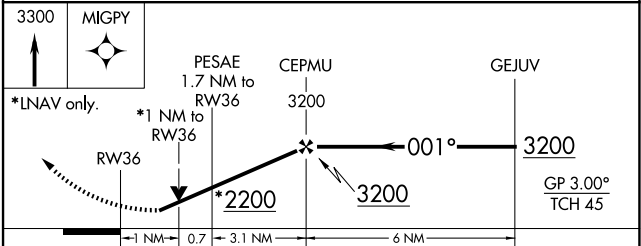


ELEV 1630	TDZE 1627
-----------	-----------

MIRL Rwy 10-28
 HIRL Rwy 18-36
 REIL Rws 18 and 28



Procedure NA for arrival on RHI VOR/DME airway radials 301 CW 021.



CATEGORY	A	B	C	D
LPV DA		1948-1	321 (400-1)	
LNAV/VNAV DA		1999-1	372 (400-1)	
LNAV MDA		2000-1	373 (400-1)	
CIRCLING	2100-1 470 (500-1)	2200-1 570 (600-1)	2200-1½ 570 (600-1½)	2220-2 590 (600-2)