

WAAS CH <b>50419</b> <b>W18A</b>	APP CRS <b>180°</b>	Rwy Ldg TDZE Apt Elev	<b>4171</b> <b>333</b> <b>333</b>
--	------------------------	-----------------------------	---

# RNAV (GPS) RWY 18

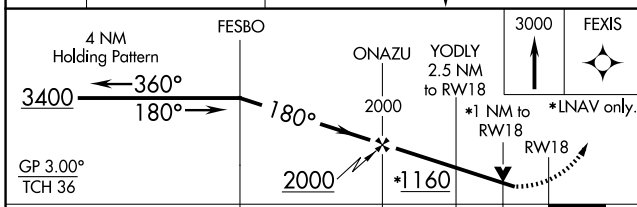
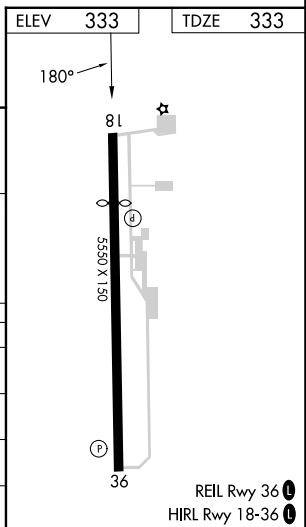
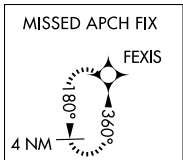
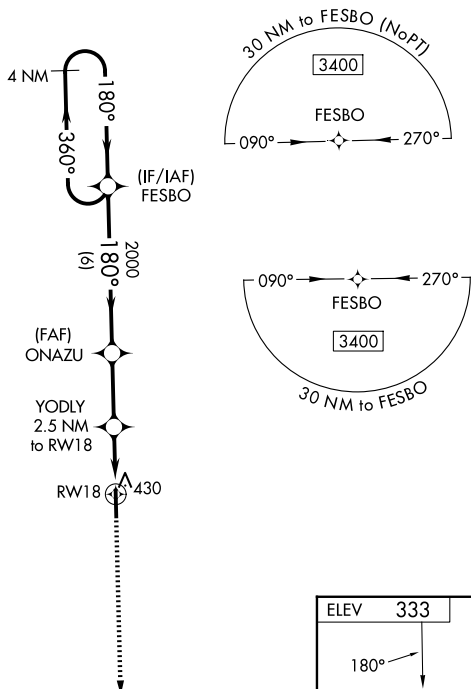
GEORGE M BRYAN (STP)

RNP APCH-GPS.

▼  
▲ For uncompensated Baro-VNAV systems, LNAV/VNAV NA below -15°C or above 54°C. Baro-VNAV and VDP NA when using Golden Triangle Rgnl altimeter setting. Rwy 18 helicopter visibility reduction below 3/4 SM NA. When local altimeter setting not received, use Golden Triangle Rgnl altimeter setting and increase LPV DA to 673 feet, increase LNAV/VNAV DA to 656 feet and visibilities all Cats 1/2 SM. Increase all MDAs 40 feet and LNAV visibility Cat C/D 1/2 SM, and Circling visibility Cat C 1/2 SM.

MISSED APPROACH:  
Climb to 3000 direct  
FEXIS and hold.

AWOS-3PT <b>118.975</b>	COLUMBUS APP CON * <b>135.6 323.275</b>	CLINC DEL <b>126.25</b>	UNICOM <b>122.7 (CTAF) 0</b>
----------------------------	--	----------------------------	---------------------------------



CATEGORY	A	B	C	D
LPV DA		633-1	300 (300-1)	
LNAV/VNAV DA		616-1	283 (300-1)	
LNAV MDA		680-1	347 (400-1)	
CIRCLING	920-1	587 (600-1)	920-1½ 587 (600-1½)	1020-2¼ 687 (700-2¼)

SC-4, 11 JUN 2026 to 09 JUL 2026

SC-4, 11 JUN 2026 to 09 JUL 2026