

(AHMET5.KKIDS) 25331

AL-5703 (FAA)

LORAIN COUNTY RGNL (LPR)
LORAIN/ELYRIA, OHIO

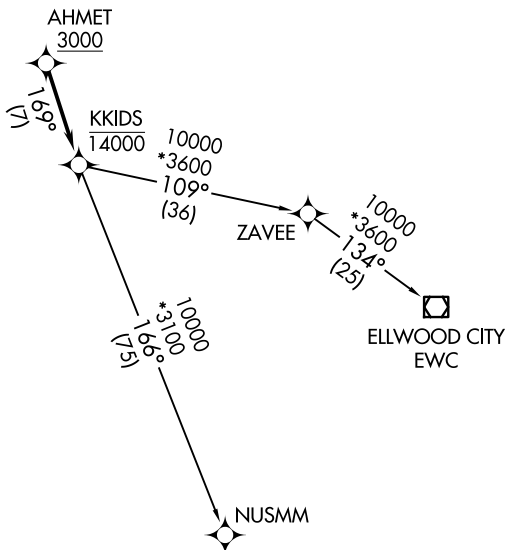
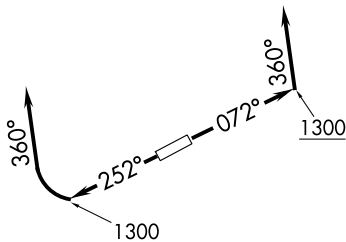
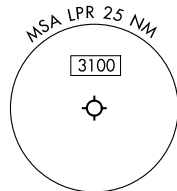
AHMET FIVE DEPARTURE (RNAV)

ASOS
118.925
CLNC DEL
125.7
CTAF
122.7
CLEVELAND DEP CON
125.35 346.325

RNAV 1 - DME/DME/IRU or GPS.

RADAR required.

**TOP ALTITUDE:
ASSIGNED BY ATC**



TAKEOFF MINIMUMS:
Rwys 7, 25: Standard with minimum climb of 500' per NM to 1300.

NOTE: Chart not to scale.

DEPARTURE ROUTE DESCRIPTION

TAKEOFF RUNWAY 7: Climb on heading 072° to 1300, then on heading 360° or as assigned by ATC for RADAR vectors to cross AHMET at or above 3000, thence....

TAKEOFF RUNWAY 25: Climb on heading 252° to 1300, then right turn on heading 360° or as assigned by ATC for RADAR vectors to cross AHMET at or above 3000, thence....

....on track 169° to cross KKIDS at or below 14000, then on (transition).

Maintain ATC assigned altitude, expect filed altitude ten minutes after departure.

ELLWOOD CITY TRANSITION (AHMET5.EWC)

NUSMM TRANSITION (AHMET5.NUSMM)

AHMET FIVE DEPARTURE (RNAV)

(AHMET5.KKIDS) 27NOV25

LORAIN/ELYRIA, OHIO
LORAIN COUNTY RGNL (LPR)

EC-2, 11 JUN 2026 to 09 JUL 2026

EC-2, 11 JUN 2026 to 09 JUL 2026