

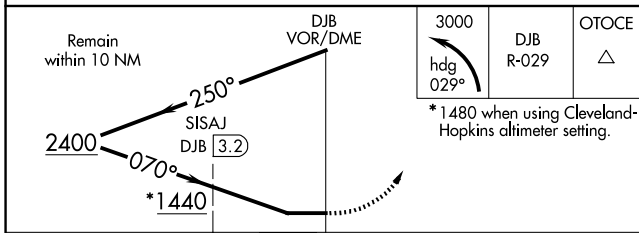
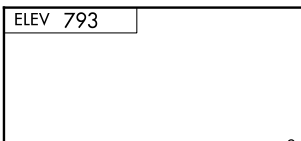
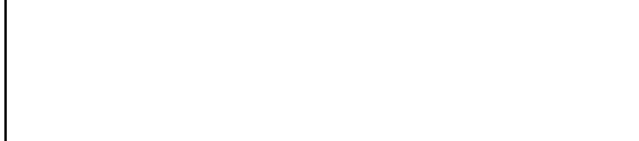
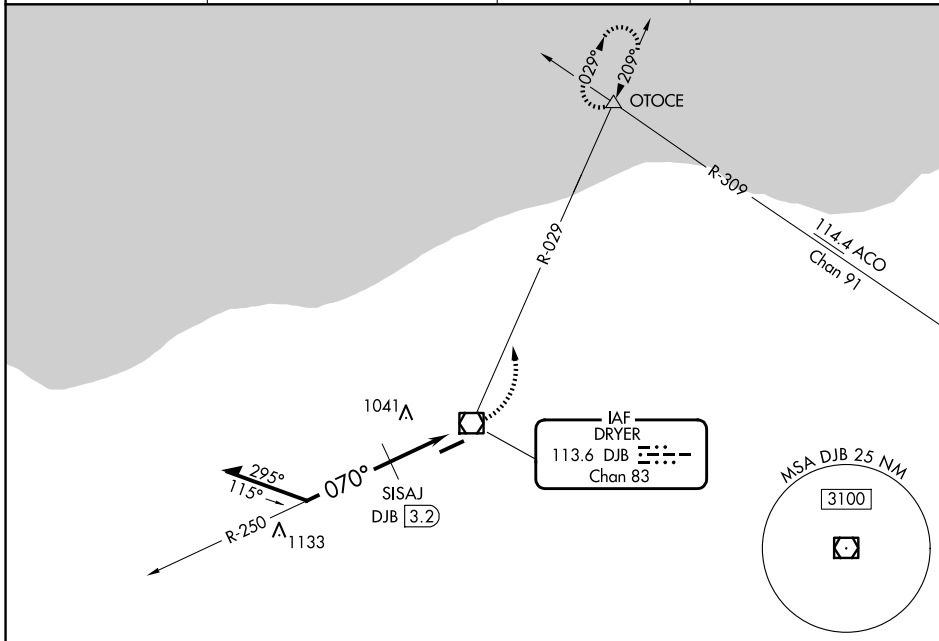
VOR/DME DJB 113.6 Chan 83	APP CRS 070°	Rwy Ldg TDZE Apt Elev	N/A N/A 793
-----------------------------------------------	------------------------	-----------------------------	----------------------------------------

VOR-A
LORAIN COUNTY RGNL (L.P.R.)

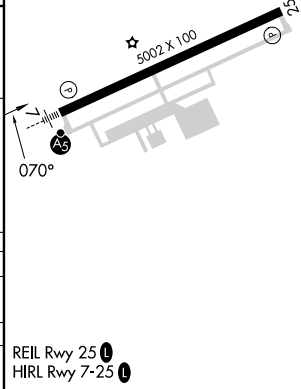
▼ When local altimeter setting not received, use Cleveland-Hopkins Intl altimeter setting and increase all MDA 40 feet, increase circling Cat C/D visibility ¼ mile.

MISSED APPROACH: Climbing left turn to 3000 via heading 029° and DJB VOR/DME R-029 direct OTOCE INT and hold.

ASOS 118.925	CLEVELAND APP CON 125.35 346.325	CLNC DEL 125.7	UNICOM 122.7 (CTAF) 0
------------------------	--------------------------------------------	--------------------------	----------------------------------------



CATEGORY	A	B	C	D
CIRCLING	1440-1	647 (700-1)	1440-1¾ 647 (700-1¾)	1440-2 647 (700-2)
SISAJ DME MINIMUMS				
CIRCLING	1300-1 507 (600-1)	1360-1 567 (600-1)	1420-1¾ 627 (700-1¾)	1420-2 627 (700-2)



EC-2, 11 JUN 2026 to 09 JUL 2026

EC-2, 11 JUN 2026 to 09 JUL 2026