

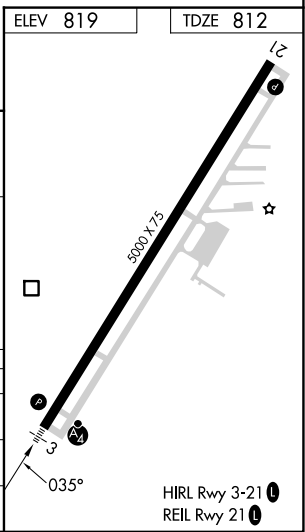
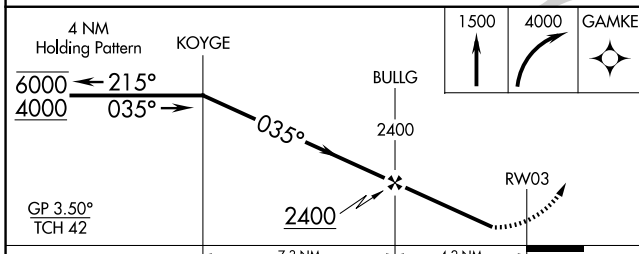
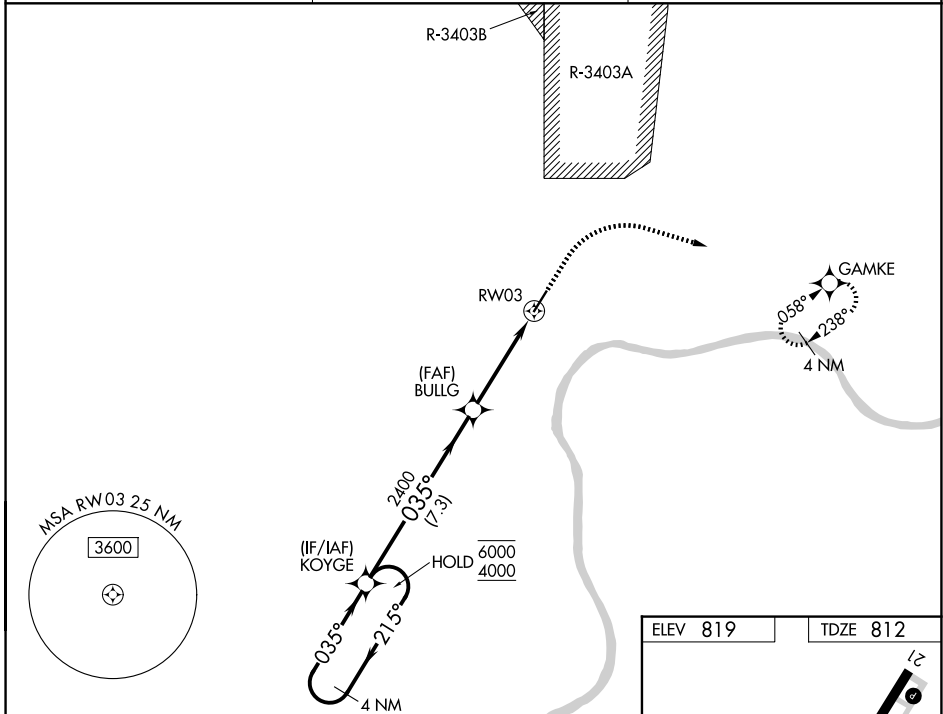
WAAS CH <b>45708</b> <b>W03A</b>	APP CRS <b>035°</b>	Rwy Ldg TDZE <b>812</b> Apt Elev <b>819</b>	<b>5000</b>
--	------------------------	---	-------------

# RNAV (GPS) Z RWY 3

MADISON RGNL (IMS)

RNP APCH - GPS.	MALSF	MISSED APPROACH: Climb to 1500 then climbing right turn to 4000 direct GAMKE and hold, continue climb-in-hold to 4000. * Missed approach requires minimum climb of 410 feet per NM to 1900.
<p>▼ For uncompensated Baro-VNAV systems, LNAV/VNAV NA below -16°C or above 54°C. Rwy 3 helicopter visibility reduction below ¾ NA.</p>		

AWOS-3 <b>119.175</b>	LOUISVILLE APP CON <b>132.075 327.0</b>	UNICOM <b>123.0 (CTAF) 0</b>
--------------------------	--	---------------------------------



CATEGORY	A	B	C	D
LPV DA	1142-¾	330 (400-¾)		NA
LNAV/VNAV DA*	1143-¾	331 (400-¾)		NA
LNAV/VNAV DA	1420-1½	608 (700-1½)		NA

EC-2, 11 JUN 2026 to 09 JUL 2026

EC-2, 11 JUN 2026 to 09 JUL 2026