

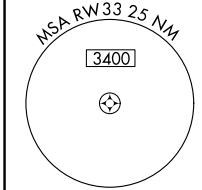
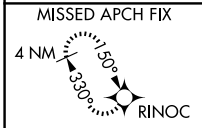
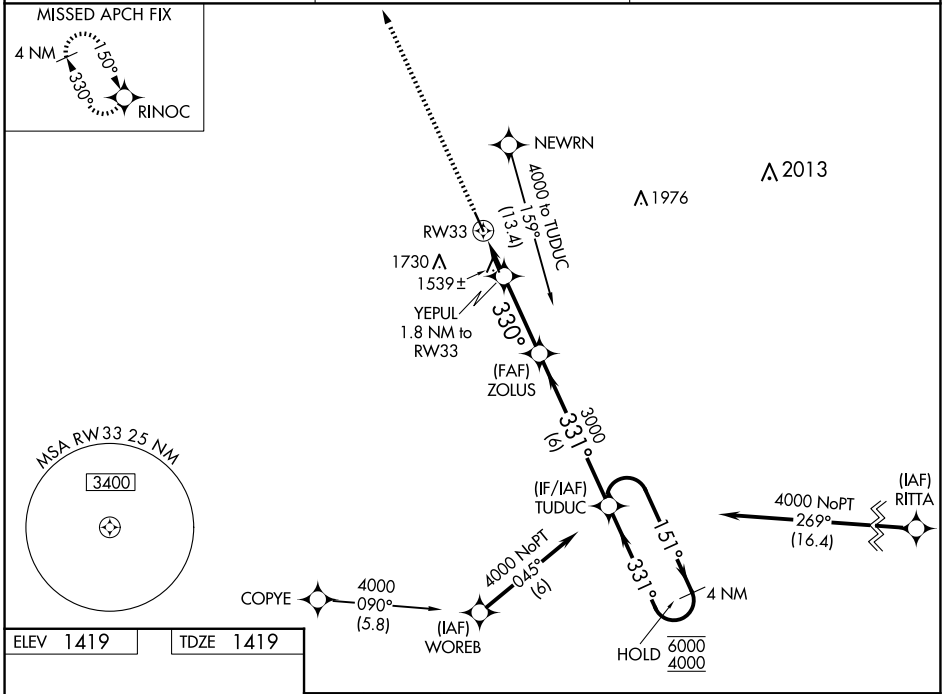
WAAS CH <b>82128</b> <b>W33A</b>	APP CRS <b>330°</b>	Rwy Idg TDZE Apt Elev	<b>4199</b> <b>1419</b> <b>1419</b>
--	------------------------	-----------------------------	---

# RNAV (GPS) RWY 33

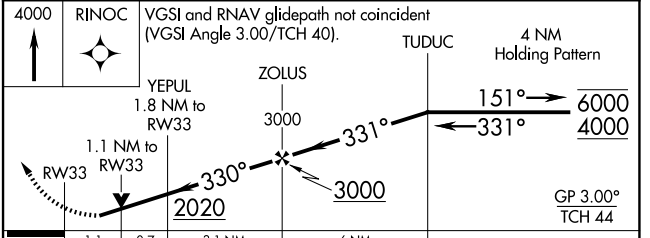
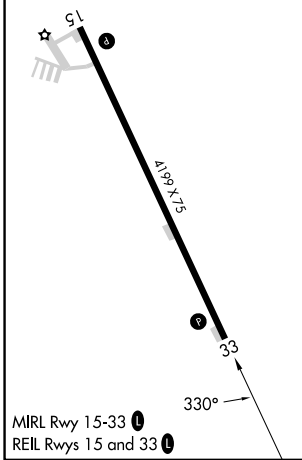
SHELDON RGNL (SHL)

RNP APCH - GPS.	MISSED APPROACH: Climb to 4000 direct RINOC and hold.
<p><b>▼</b> Rwy 33 helicopter visibility reduction below <math>\frac{3}{4}</math> SM NA. For uncompensated Baro-VNAV systems, LNAV/VNAV NA below -17°C or above 54°C.</p> <p><b>▲</b></p>	

AWOS-3 <b>119.775</b>	MINNEAPOLIS CENTER <b>125.025 235.625</b>	UNICOM <b>122.8 (CTAF) 0</b>
--------------------------	--	---------------------------------



ELEV 1419	TDZE 1419
-----------	-----------



CATEGORY	A	B	C	D
LPV DA	1718-1 299 (300-1)			NA
LNAV/VNAV DA	1696-1 277 (300-1)			NA
LNAV MDA	1800-1	381 (400-1)	1800-1 $\frac{1}{8}$ 381 (400-1 $\frac{1}{8}$ )	NA
CIRCLING	1820-1 401 (500-1)	1920-1 501 (600-1)	2080-1 $\frac{3}{4}$ 661 (700-1 $\frac{3}{4}$ )	NA

NC-3, 11 JUN 2026 to 09 JUL 2026

NC-3, 11 JUN 2026 to 09 JUL 2026