

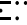
# PIKES THREE DEPARTURE

AL-571.5 (FAA)

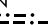
CENTENNIAL (APA)  
DENVER, COLORADO


DENVER DEP CON  
132.75 269.3  
ATIS  
120.3  
CLNC DEL  
128.6

RADAR required.

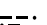
DENVER  
117.9 DEN   
Chan 126

**TOP ALTITUDE:  
ASSIGNED BY ATC**

FALCON  
116.3 FQF   
Chan 110

HUGO  
112.1 HGO   
Chan 58

BLACK FOREST  
112.5 BRK   
Chan 72

PUEBLO  
116.7 PUB   
Chan 114

MOCA 14300  
for ALAMOSA  
Transition.

ALAMOSA  
113.9 ALS   
Chan 86

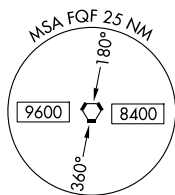
### TAKEOFF MINIMUMS

Rwys 10, 35L/R: Standard.

Rwy 17L: Standard with minimum climb of 255'/NM to 8000.

Rwy 17R: Standard with minimum climb of 372'/NM to 8000.

Rwy 28: Standard with minimum climb of 300'/NM to 8000.



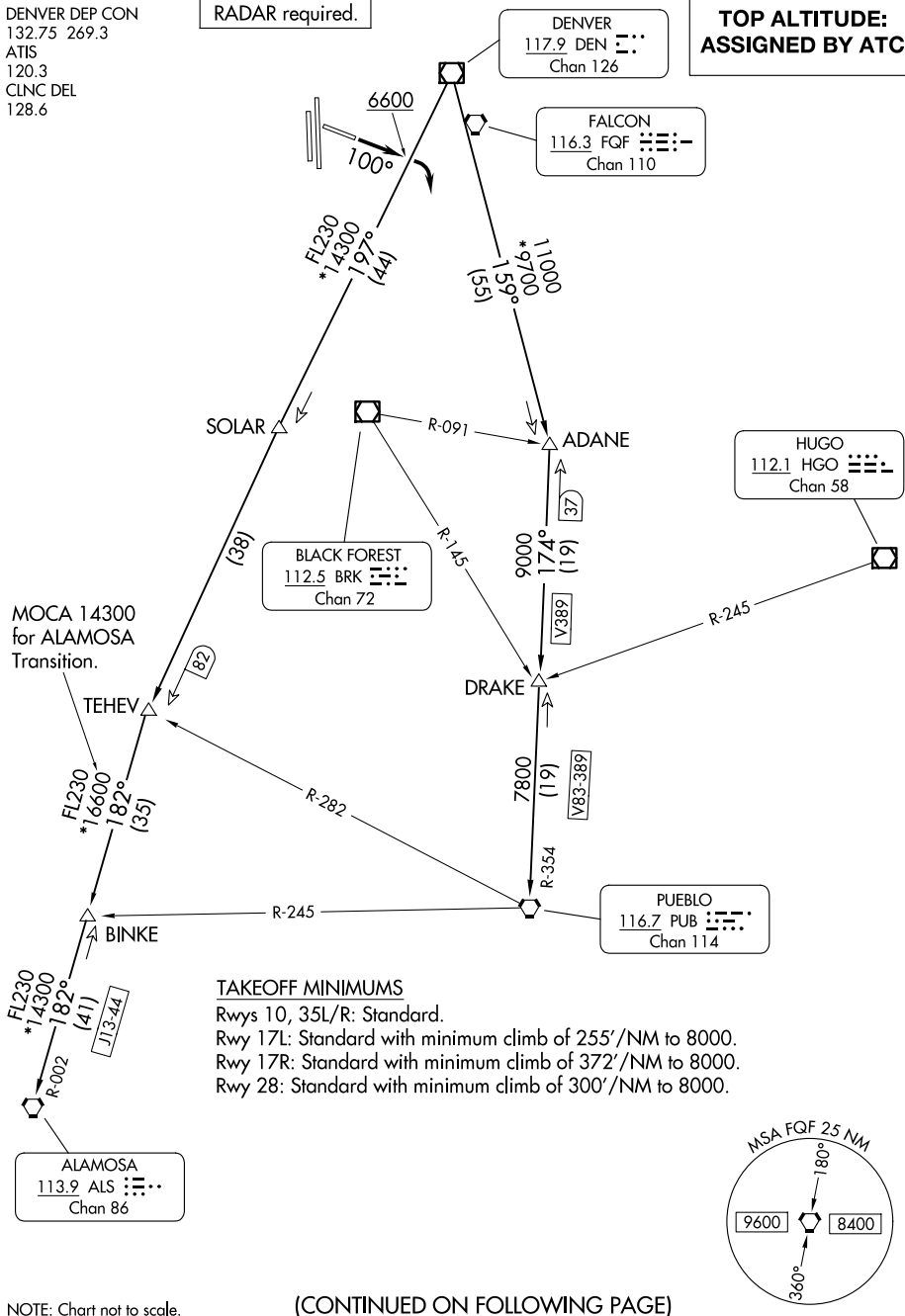
NOTE: Chart not to scale.

(CONTINUED ON FOLLOWING PAGE)

# PIKES THREE DEPARTURE

SW-1, 11 JUN 2026 to 09 JUL 2026

SW-1, 11 JUN 2026 to 09 JUL 2026





DEPARTURE ROUTE DESCRIPTION

TAKEOFF RUNWAYS 17L/R, 28, 35L/R: Fly assigned heading and altitude for RADAR vectors to assigned route. Expect filed altitude 10 minutes after departure.

TAKEOFF RUNWAY 10: Climb on heading 100° to 6600 before turning right.

LOST COMMUNICATIONS: If no transmissions are received within one minute after departure, maintain assigned heading until 7000, then climb to filed altitude direct to DEN VOR/DME, then on assigned route. If filed altitude is above 10000, cross DEN VOR/DME at or above 11000.

ALAMOSA TRANSITION (PIKES3.ALS): From over DEN VOR/DME on DEN R-197 to TEHEV, then on ALS R-002 to ALS VORTAC.

BINKE TRANSITION (PIKES3.BINKE): From over DEN VOR/DME on DEN R-197 to TEHEV, then on ALS R-002 to BINKE.

PUEBLO TRANSITION (PIKES3.PUB): From over DEN VOR/DME on DEN R-159 to ADANE, then on PUB R-354 to PUB VORTAC.

SW-1, 11 JUN 2026 to 09 JUL 2026

SW-1, 11 JUN 2026 to 09 JUL 2026