

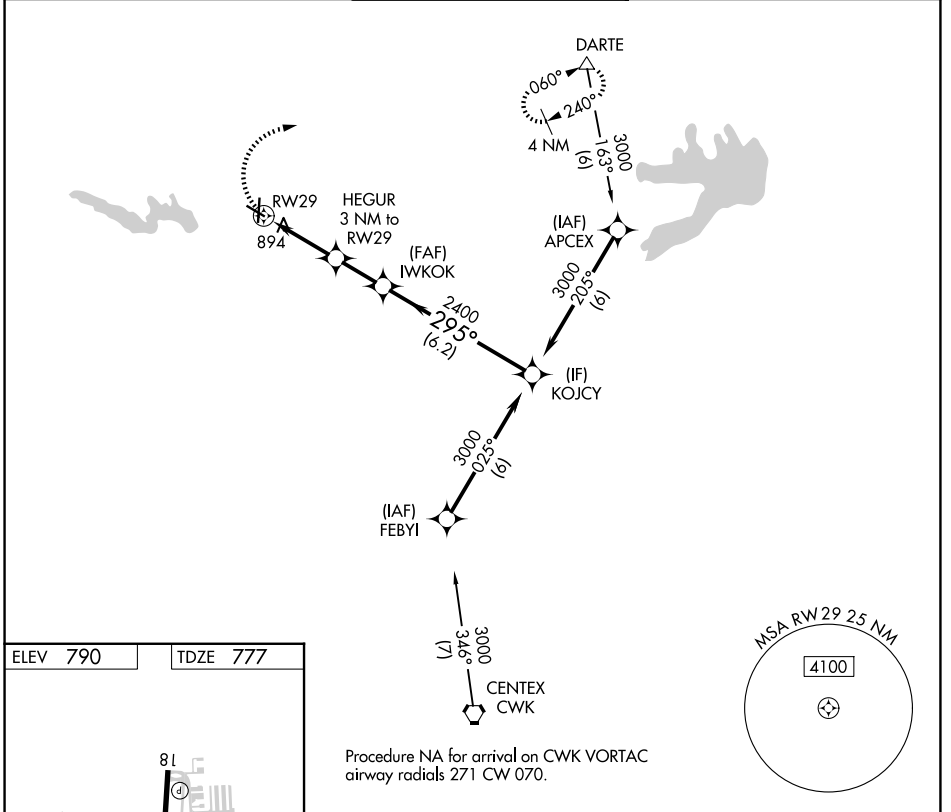
APP CRS	Rwy Ldg	4099
295°	TDZE	777
	Apt Elev	790

RNAV (GPS) RWY 29

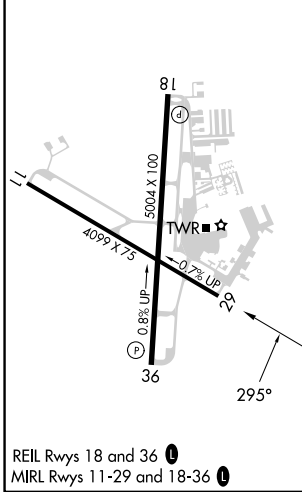
GEORGETOWN EXEC (GTU)

RNP APCH.
 ▼ Rwy 29 helicopter visibility reduction below 3/4 SM NA. VDP NA when using Skylark Field altimeter setting. When local altimeter setting not received, use Skylark Field altimeter setting and increase all MDA 80 feet increase LNAV and Circling Cat C/D visibility 1/4 SM.
 ▲ MISSED APPROACH: Climbing right turn to 3000 direct DARTE and hold.

ATIS 118.6	AUSTIN APP CON 119.0 370.85	GEORGETOWN TOWER ★ 120.225 (CTAF) 0	GND CON 119.125	UNICOM 123.0
----------------------	---------------------------------------	---	---------------------------	------------------------



ELEV 790	TDZE 777
----------	----------



3000	DARTE	HEGUR 3 NM to RWY29	IWKOK	KOJCY	
		1.2 NM to RWY29	3.04° TCH 40	3000	
		1760	2400	295°	
		1.2	1.8	2 NM	6.2 NM
CATEGORY	A	B	C	D	
LNAV MDA	1220-1	443 (500-1)	1220-1 3/8	443 (500-1 3/8)	
CIRCLING	1240-1 450 (500-1)	1340-1 550 (600-1)	1360-1 1/2 570 (600-1 1/2)	1640-2 3/4 850 (900-2 3/4)	

SC-3, 11 JUN 2026 to 09 JUL 2026

SC-3, 11 JUN 2026 to 09 JUL 2026