

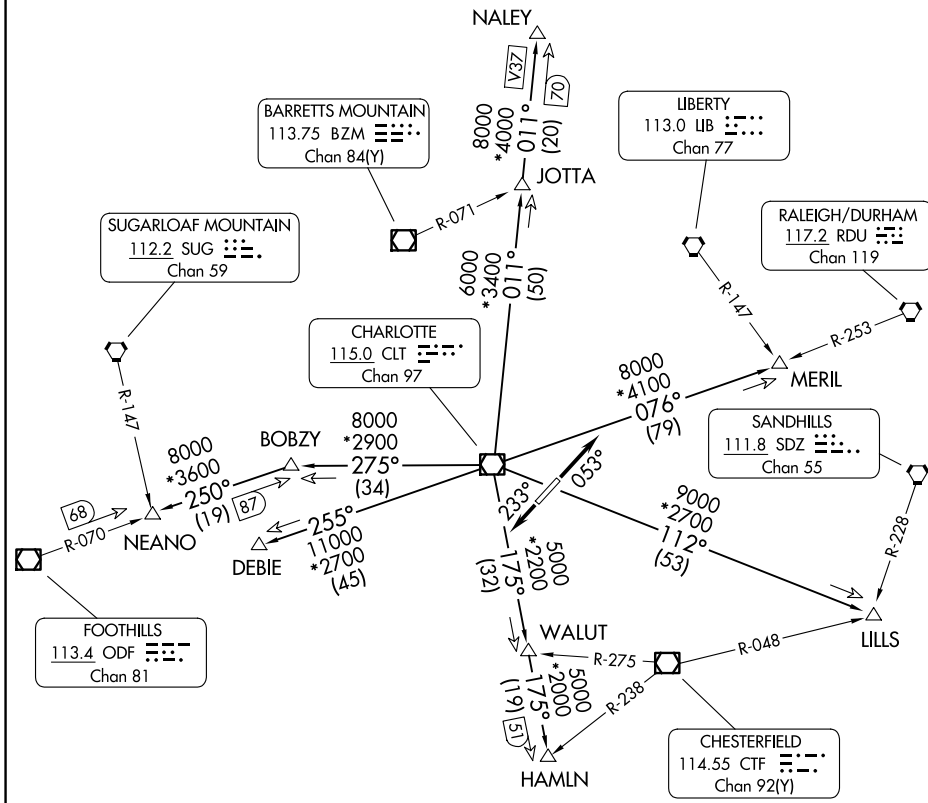
KERMIT FIVE DEPARTURE

CHARLOTTE DEP CON
120.05 307.8
ASOS
135.775
CLNC DEL
132.55

RADAR and DME required.

**TOP ALTITUDE:
3000**

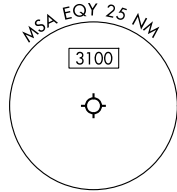
TAKEOFF MINIMUMS
Rwys 5, 23: Standard.



SE-2, 11 JUN 2026 to 09 JUL 2026

SE-2, 11 JUN 2026 to 09 JUL 2026

- NOTE: Turbojets only.
- NOTE: Upon reaching 10000 MSL, accelerate to and maintain 280K, if unable advise ATC.
- NOTE: Transponder code will be issued via Charlotte clearance delivery.



NOTE: Chart not to scale.

(CONTINUED ON FOLLOWING PAGE)

KERMIT FIVE DEPARTURE

MONROE, NORTH CAROLINA



DEPARTURE ROUTE DESCRIPTION

TAKEOFF RUNWAY 5: Climb on heading 053°, thence. . .

TAKEOFF RUNWAY 23: Climb on heading 233°, thence. . .

. . .on RADAR vectors to intercept filed/assigned transition or enroute fix/navaid.
Maintain 3000, expect filed altitude 10 minutes after departure.

DEBIE TRANSITION (KER5.DEBIE): From over CLT VOR/DME on CLT R-255 to DEBIE.

HAMLN TRANSITION (KER5.HAMLN): From over CLT VOR/DME on CLT R-175 to HAMLN.

JOTTA TRANSITION (KER5.JOTTA): From over CLT VOR/DME on CLT R-011 to JOTTA.

LILLS TRANSITION (KER5.LILLS): From over CLT VOR/DME on CLT R-112 to LILLS.

MERIL TRANSITION (KER5.MERIL): From over CLT VOR/DME on CLT R-076 to MERIL.

NALEY TRANSITION (KER5.NALEY): From over CLT VOR/DME on CLT R-011 to NALEY.

NEANO TRANSITION (KER5.NEANO): From over CLT VOR/DME on CLT R-275 to BOBZY,
then on ODF R-070 to NEANO.

SE-2, 11 JUN 2026 to 09 JUL 2026

SE-2, 11 JUN 2026 to 09 JUL 2026