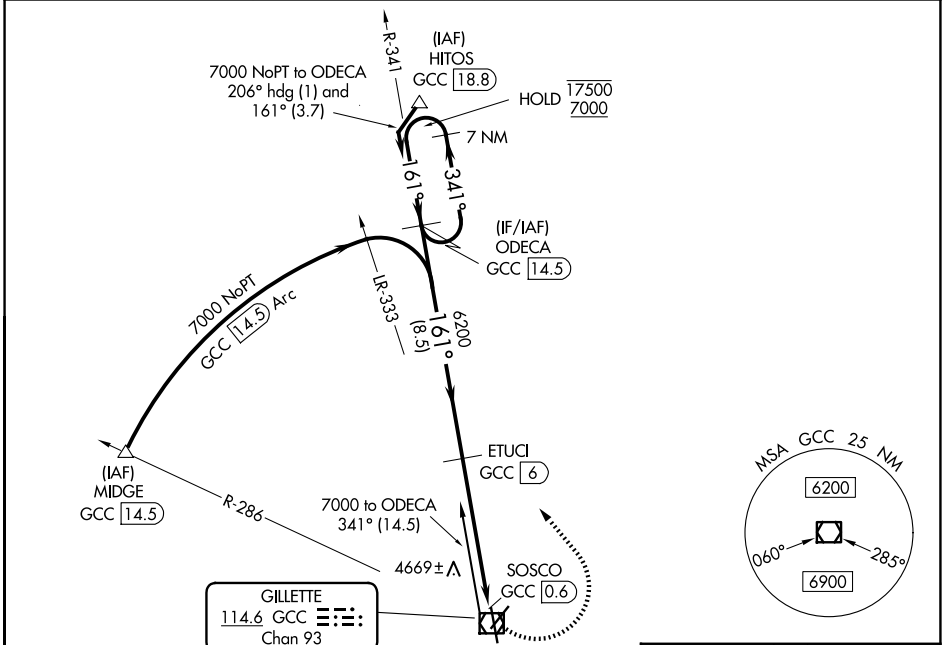


VOR/DME GCC 114.6 Chan 93	APP CRS 161°	Rwy Ldg TDZE 4337 Apt Elev 4365
---	------------------------	--

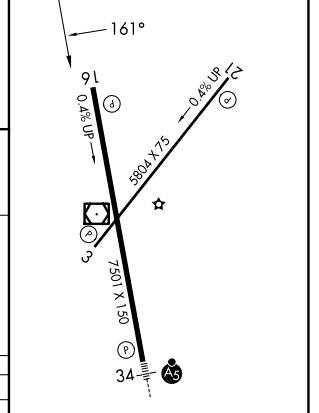
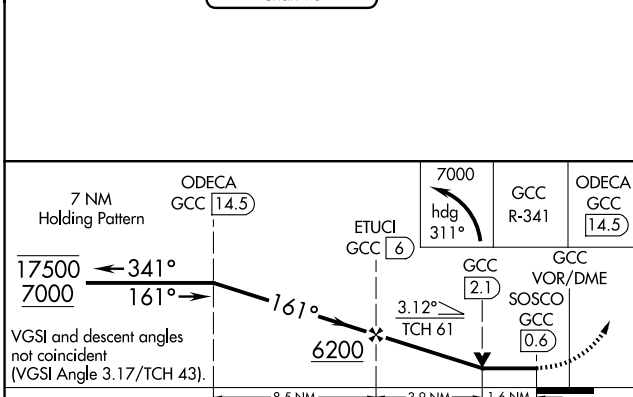
VOR RWY 16
NORTHEAST WYOMING RGNL (GCC)

DME required.	MISSED APPROACH: Climbing left turn to 7000 on heading 311° and GCC R-341 to ODECA/14.5 DME and hold.
▼ Circling Rwy 3 NA at night. Rwy 16 helicopter visibility reduction below ¾ SM NA.	

ASOS 124.175	DENVER CENTER 135.6 363.025	UNICOM 122.95	CTAF 118.5 ①
------------------------	---------------------------------------	-------------------------	-------------------------------



ELEV 4365	D TDZE 4337
-----------	--------------------



CATEGORY	A	B	C	D
S-16	4920-1	583 (600-1)	4920-1¾	583 (600-1¾)
CIRCLING	5040-1 675 (700-1)	5240-1¼ 875 (900-1¼)	5400-3	1035 (1100-3)

HIRL Rwy 16-34 **①**
REIL Rws 3, 16, and 21
MIRL Rwy 3-21 **①**

NW-1, 11 JUN 2026 to 09 JUL 2026

NW-1, 11 JUN 2026 to 09 JUL 2026