

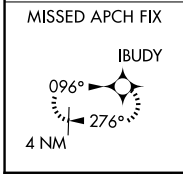
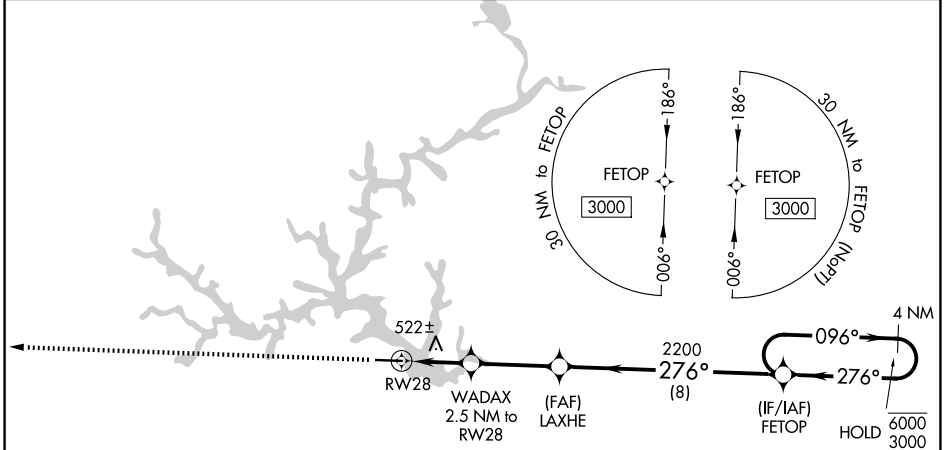
WAAS CH <b>82318</b>	APP CRS <b>276°</b>	Rwy Ldg TDZE Apt Elev	<b>5424</b> <b>379</b> <b>385</b>
-------------------------	------------------------	-----------------------------	---

# RNAV (GPS) RWY 28

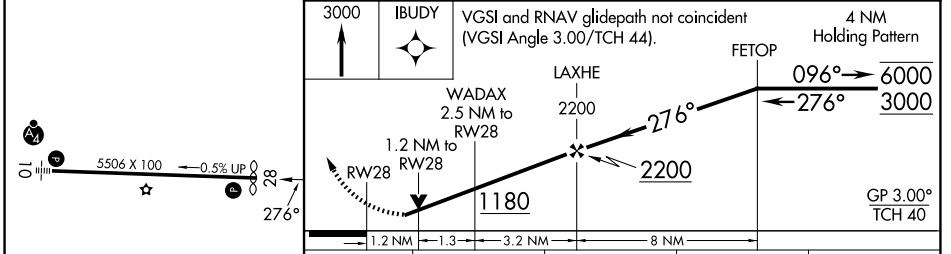
BALDWIN COUNTY RGNL (MLJ)

RNP APCH-GPS.		MISSED APPROACH: Climb to 3000 direct IBUDY and hold.
<p><b>▼</b> <b>▲</b> Rwy 28 helicopter visibility reduction below 3/4 SM NA. For uncompensated Baro-VNAV systems, LNAV/VNAV NA below -15°C or above 54°C.</p>		

AWOS-3 <b>120.925</b>	ATLANTA APP CON ★ <b>124.2 279.6</b>	UNICOM <b>122.975 (CTAF) ①</b>
--------------------------	---	-----------------------------------



ELEV 385	<b>D</b>	TDZE 379
----------	----------	----------



	A	B	C	D
CATEGORY	A	B	C	D
LPV DA	680-1 301 (300-1)			
LNAV/VNAV DA	830-1 3/8 451 (500-1 3/8)			
LNAV MDA	780-1 401 (400-1)	780-1 1/8 401 (400-1 1/8)		
CIRCLING	900-1 515 (600-1)	940-1 555 (600-1)	1080-2 695 (700-2)	1280-3 895 (900-3)

SE-4, 11 JUN 2026 to 09 JUL 2026

SE-4, 11 JUN 2026 to 09 JUL 2026