


**(ROCKY1.ROCKY) 23334**  
**ROCKY ONE DEPARTURE**

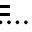
AL-5733 (FAA)

**EAGLE CREEK AIRPARK (EYE)**  
 INDIANAPOLIS, INDIANA

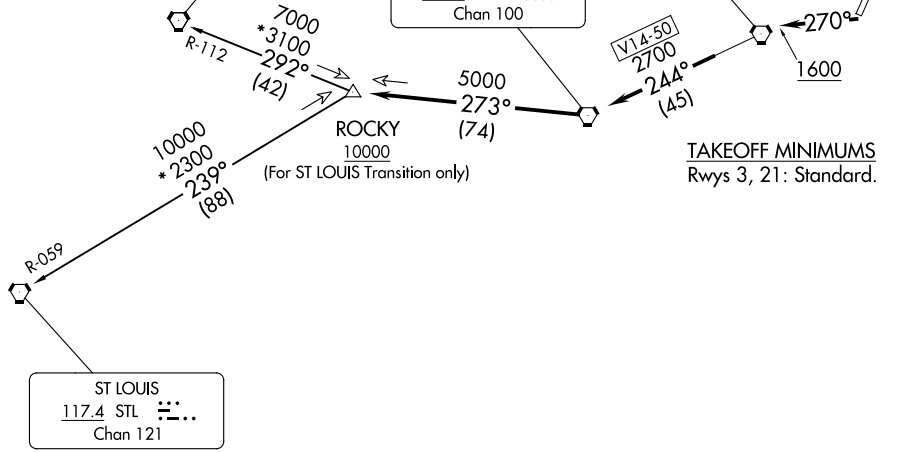
ASOS  
 121.575  
 CLNC DEL  
 128.6  
 INDIANAPOLIS DEP CON  
 119.05 317.8

**SPINNER**  
112.7 SPI   
 Chan 74


**TOP ALTITUDE:  
 ASSIGNED BY ATC**

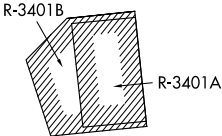
**TERRE HAUTE**  
115.3 TTH   
 Chan 100

**BRICKYARD**  
116.3 VHP   
 Chan 110



**TAKEOFF MINIMUMS**  
 Rwys 3, 21: Standard.

**ST LOUIS**  
117.4 STL   
 Chan 121



- NOTE: RADAR required.
- NOTE: Select appropriate localizer/DME frequency/channel prior to departure.
- NOTE: Turbojets accelerate to 250K until reaching 10000, if unable advise ATC.
- NOTE: Assigned to aircraft with a requested altitude of 11000 or above.

NOTE: Chart not to scale.

**DEPARTURE ROUTE DESCRIPTION**

**TAKEOFF RWY 3:** Climb heading 031° to 2100, then on assigned heading to assigned altitude. Thence . . . .  
**TAKEOFF RWY 21:** Climb heading 270° to 1600, then on assigned heading to assigned altitude. Thence . . . .

. . . . expect RADAR vectors to join VHP R-244 to TTH VORTAC, then via TTH R-273 to ROCKY INT then via transition or assigned route. Expect clearance to requested altitude ten minutes after departure.

**SPINNER TRANSITION (ROCKY1.SPI):** From over ROCKY INT on SPI R-112 to SPI VORTAC.  
**ST LOUIS TRANSITION (ROCKY1.STL):** From over ROCKY INT on STL R-059 to STL VORTAC.

**ROCKY ONE DEPARTURE**  
**(ROCKY1.ROCKY) 01FEB18**

INDIANAPOLIS, INDIANA  
 EAGLE CREEK AIRPARK (EYE)

EC-2, 11 JUN 2026 to 09 JUL 2026

EC-2, 11 JUN 2026 to 09 JUL 2026