

VOR/DME CTF <b>114.55</b> Chan <b>92 (Y)</b>	APP CRS <b>155°</b>	Rwy Ldg TDZE Apt Elev <b>N/A</b> <b>N/A</b> <b>364</b>
--	------------------------	--

# VOR-A

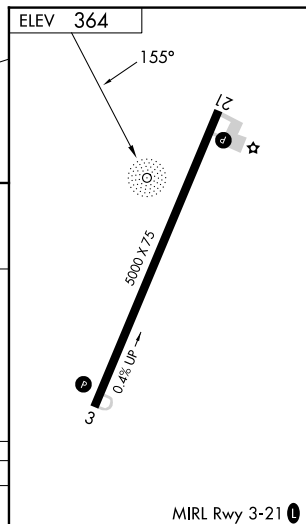
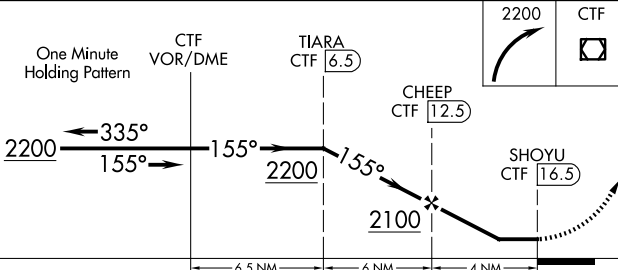
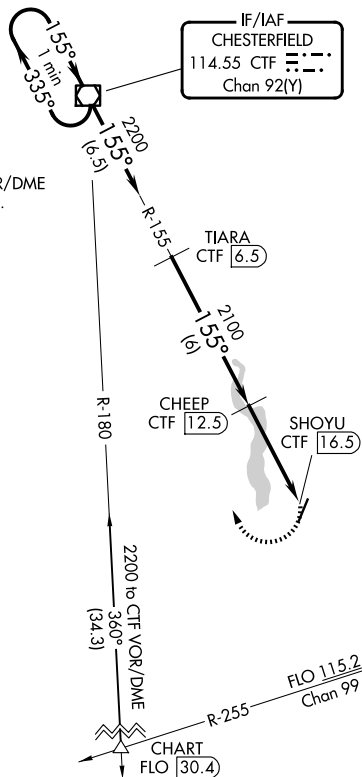
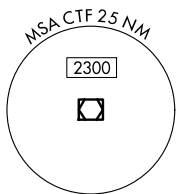
HARTSVILLE RGNL (HVS)

<b>▼</b>	DME required.	MISSED APPROACH: Climbing right turn to 2200 direct CTF VOR/DME and hold.
----------	---------------	---

AWOS-3 <b>118.225</b>	SHAW APP CON ★ <b>125.4 318.1</b>	UNICOM <b>122.8 (CTAF) 0</b>
--------------------------	--------------------------------------	---------------------------------

## DME REQUIRED

NoPT for arrival on CTF VOR/DME airway radials 234 CW 048.



CATEGORY	A	B	C	D
CIRCLING	860-1	496 (500-1)	960-1½ 596 (600-1½)	NA

MIRL Rwy 3-21 0

SE-2, 11 JUN 2026 to 09 JUL 2026

SE-2, 11 JUN 2026 to 09 JUL 2026