

WAAS CH 70435 W22A	APP CRS 222°	Rwy Ldg TDZE Apt Elev	6900 152 158
--	------------------------	-----------------------------	---

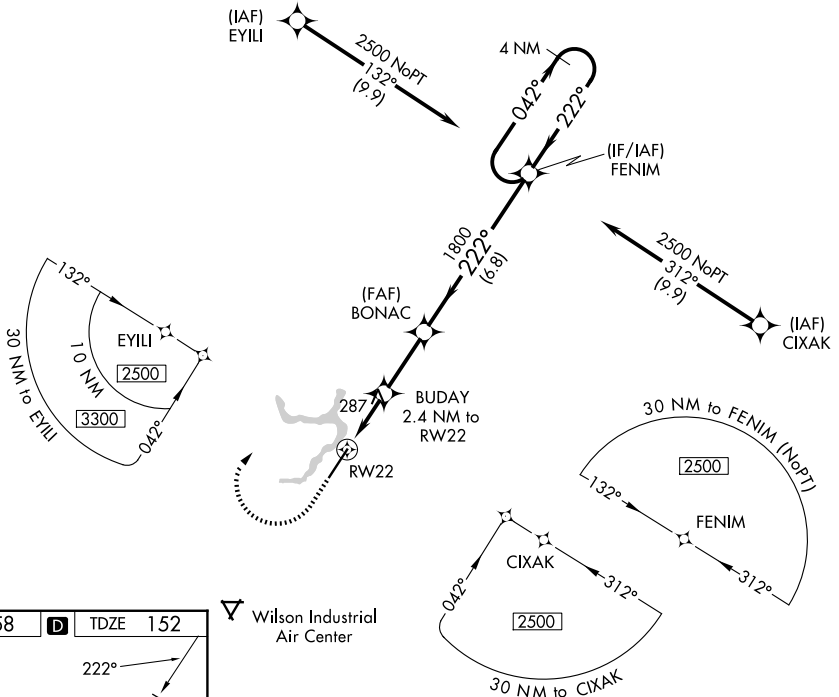
RNAV (GPS) RWY 22

ROCKY MOUNT/WILSON RGNL (R.WI)

⚠ For uncompensated Baro-VNAV systems, LNAV/VNAV NA below -10°C (14°F) or above 54°C (130°F). DME/DME RNP-0.3 NA. Baro-VNAV and VDP NA when using Wayne Exec Jetport altimeter setting. When local altimeter setting not received, use Wayne Exec Jetport altimeter setting and increase all DA 59 feet and all visibilities ¼ mile; increase all MDA 60 feet and LNAV Cats C/D and Circling Cat C visibility ¼ mile. Rwy 22 helicopter visibility reduction below ¾ SM NA.

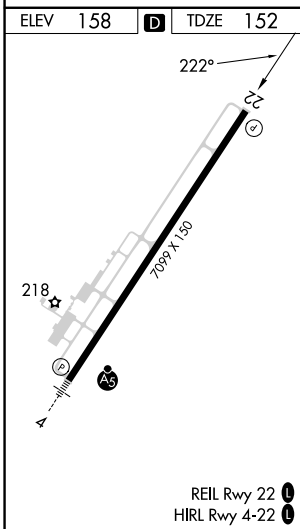
MISSED APPROACH: Climb to 1000 then climbing right turn to 2500 direct FENIM and hold.

ASOS 118.875	WASHINGTON CENTER 123.85 279.65	UNICOM 123.05 (CTAF) 0
------------------------	---	----------------------------------

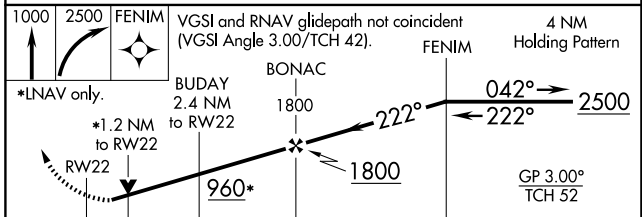


SE-2, 11 JUN 2026 to 09 JUL 2026

SE-2, 11 JUN 2026 to 09 JUL 2026



⚠ Wilson Industrial Air Center



	1.2	1.2 NM	2.6 NM	6.8 NM	
CATEGORY	A	B	C	D	
LPV DA	DA	436-7/8	284 (300-7/8)		
LNAV/VNAV DA	DA	513-1 1/8	361 (400-1 1/8)		
LNAV MDA	560-1	408 (500-1)	560-1 1/8	408 (500-1 1/8)	
CIRCLING	600-1	620-1	720-1 1/2	760-2	
	442 (500-1)	462 (500-1)	562 (600-1 1/2)	602 (700-2)	