

WAAS CH 82222 W33A	APP CRS 333°	Rwy Idg TDZE Apt Elev	4400 830 833
--	------------------------	-----------------------------	---

RNAV (GPS) RWY 33

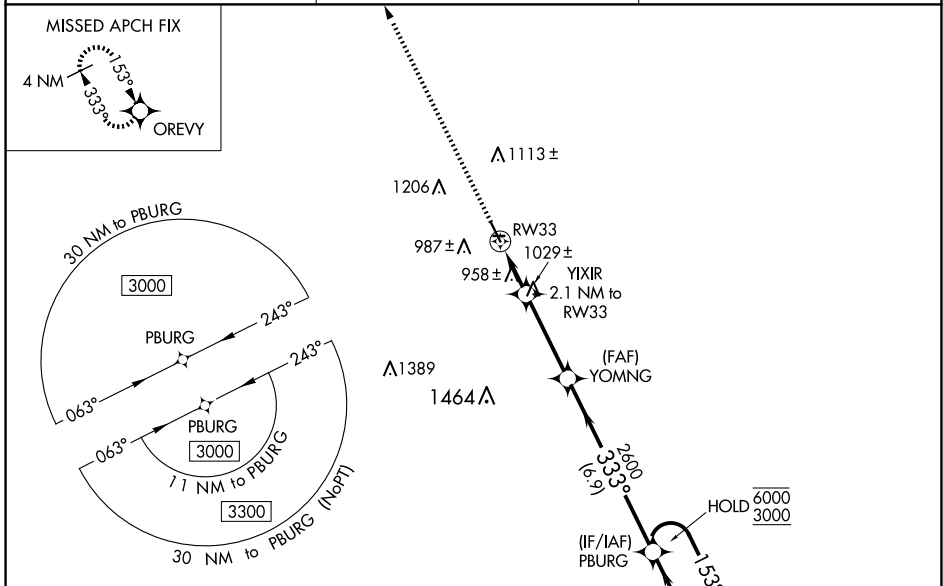
MONTICELLO RGNL (MXO)

RNP APCH - GPS.

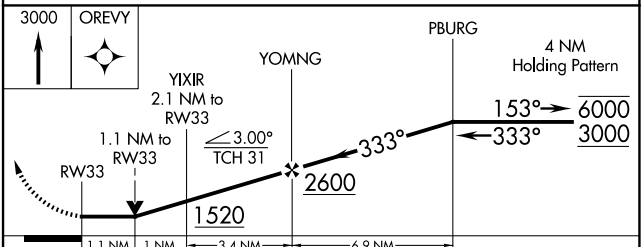
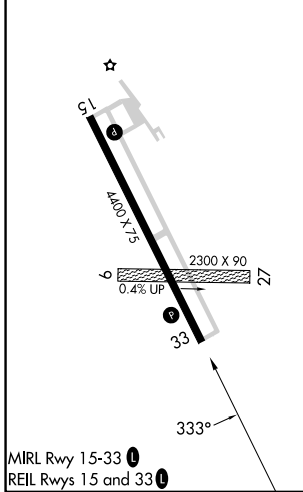
⚠ Circling NA to Rwy 9 and 27. Circling Rwy 15 NA at night. VDP NA when using Dubuque altimeter setting. Rwy 33 helicopter visibility reduction below $\frac{3}{4}$ SM NA. When local altimeter setting not received, use Dubuque altimeter setting and increase all MDAs 100 feet; increase LP Cat C, LNAV Cat C and Circling Cat C visibility $\frac{1}{4}$ SM.

MISSED APPROACH: Climb to 3000 direct OREVEY and hold.

AWOS-3 119.275	CEDAR RAPIDS APP CON * 134.05 266.8	UNICOM 122.8 (CTAF) 0
--------------------------	---	---------------------------------



ELEV 833	TDZE 830
----------	----------



CATEGORY	A	B	C	D
LP MDA	1220-1	390 (400-1)	1220- $\frac{1}{8}$ 390 (400- $\frac{1}{8}$)	NA
LNAV MDA	1280-1	450 (500-1)	1280- $\frac{1}{8}$ 450 (500- $\frac{1}{8}$)	NA
CIRCLING	1380-1 547 (600-1)	1400-1 567 (600-1)	1520-2 687 (700-2)	NA

NC-3, 11 JUN 2026 to 09 JUL 2026

NC-3, 11 JUN 2026 to 09 JUL 2026