

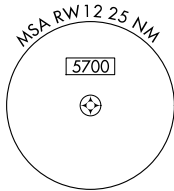
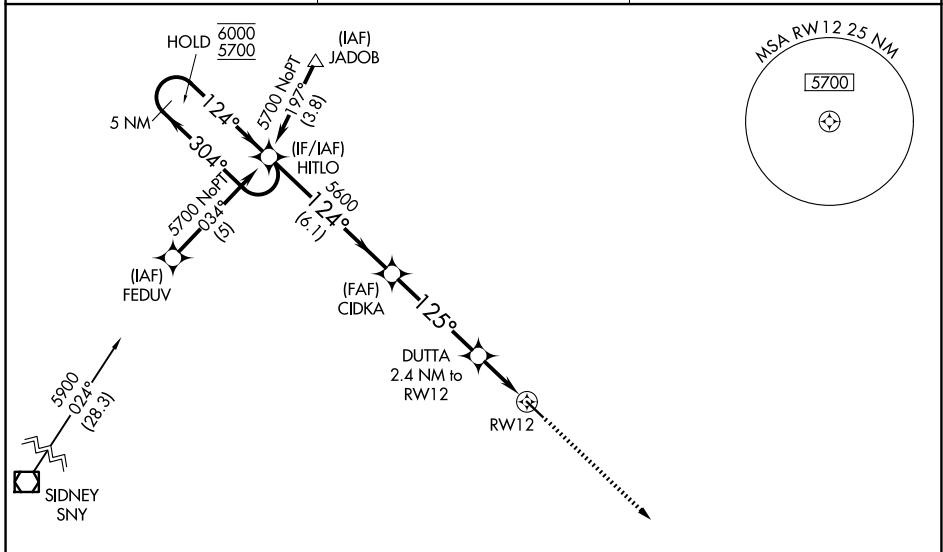
WAAS CH 99708 W12A	APP CRS 125°	Rwy Ldg TDZE Apt Elev	4699 3394 3394
--	------------------------	-----------------------------	---

RNAV (GPS) RWY 12

GARDEN COUNTY/KING RHILEY FLD (OKS)

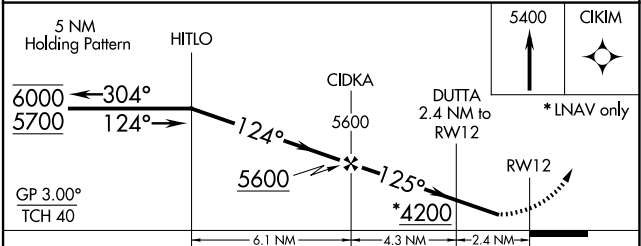
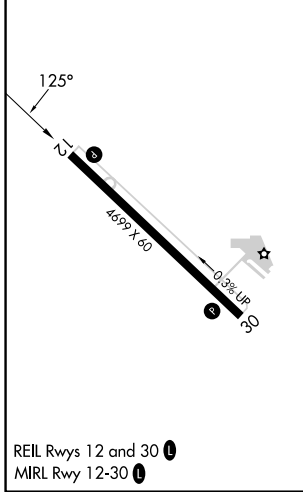
RNP APCH.	Baro-VNAV NA. Rwy 12 helicopter visibility reduction below 3/4 SM NA. Use Ogallala altimeter setting.	MISSED APPROACH: Climb to 5400 direct CIKIM and hold.
-----------	---	---

OGA AWOS-3 121.275	DENVER CENTER 118.475 225.4	UNICOM 122.8 (CTAF) 0
------------------------------	---------------------------------------	---------------------------------



Procedure NA for arrivals at SNY VOR/DME on V6 westbound.

ELEV 3394	TDZE 3394
-----------	-----------



CATEGORY	A	B	C	D
LPV DA	3762-1¼	368 (400-1¼)		NA
LNAV/VNAV DA	3882-1¾	488 (500-1¾)		NA
LNAV MDA	3980-1	586 (600-1)		NA
CIRCLING	3980-1 586 (600-1)	4180-1 786 (800-1)		NA

NC-2, 11 JUN 2026 to 09 JUL 2026

NC-2, 11 JUN 2026 to 09 JUL 2026