

WAAS CH <b>72824</b> <b>W16A</b>	APP CRS <b>157°</b>	Rwy Ldg TDZE Apt Elev	<b>5000</b> <b>413</b> <b>413</b>
----------------------------------------	------------------------	-----------------------------	-----------------------------------------

# RNAV (GPS) RWY 16

MC COMB/PIKE COUNTY/JOHN E LEWIS FLD (MCB)

RNP APCH.

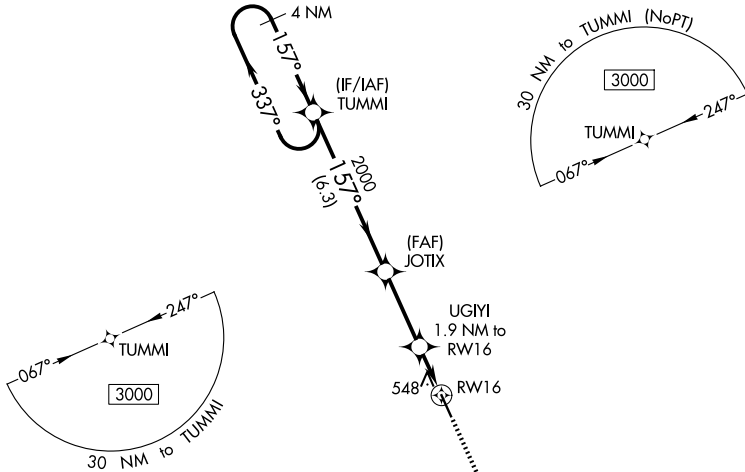
**⚠** For uncompensated Baro-VNAV systems, LNAV/VNAV NA below -4°C (25°F) or above 54°C (130°F). Inop table does not apply to LPV all Cats. For inop ALS, increase LNAV/VNAV all Cats visibility to 7/8 SM.

MALSF



**MISSED APPROACH:**  
Climb to 3000 direct  
GLADS and hold.

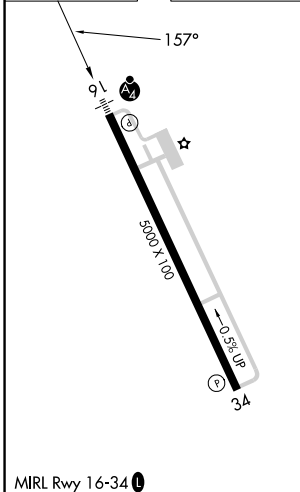
ASOS <b>119.025</b>	HOUSTON CENTER <b>126.8 327.8</b>	UNICOM <b>123.05 (CTAF) 0</b>
------------------------	--------------------------------------	----------------------------------



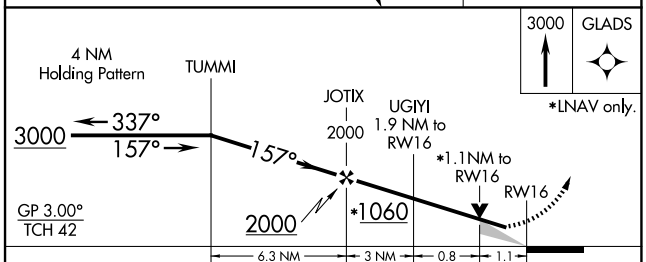
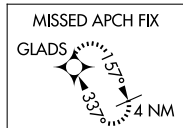
SC-4, 11 JUN 2026 to 09 JUL 2026

SC-4, 11 JUN 2026 to 09 JUL 2026

ELEV	<b>413</b>	TDZE	<b>413</b>
------	------------	------	------------



MIRL Rwy 16-34 **0**



CATEGORY	A	B	C	D
LPV DA		615-3/4	202 (300-3/4)	
LNAV/VNAV DA		709-3/4	296 (300-3/4)	
LNAV MDA	800-3/4	387 (400-3/4)	800-7/8	387 (400-7/8)
CIRCLING	880-1	467 (500-1)	940-1 1/2 527 (600-1 1/2)	1160-2 1/2 747 (800-2 1/2)