

FORT DRUM, NEW YORK

HI-ILS or LOC RWY 21

LOC/DME I-GTB 108.5 Chan 22	APCH CRS 209°	Rwy Idg 10,000 TDZE 677 Arpt Elev 690	[USA]	WHEELER-SACK AAF (FORT DRUM) (KGTB)
---	-------------------------	--	-------	-------------------------------------

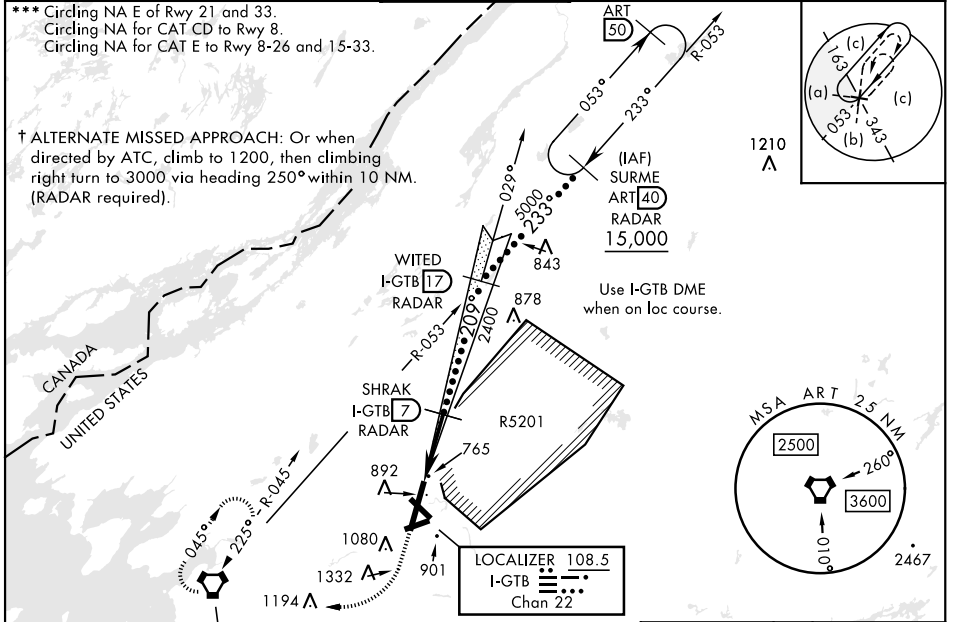
DME or RADAR required.

ALSIF-1 A1

* When ALS inop, increase vis to ¾ mile.
 ** When ALS inop, increase CAT C vis to 1 mile, CAT DE vis to 1¼ miles.

† MISSED APPROACH: Climb to 1200, then climbing right turn to 5000 direct ART VORTAC and hold. Continue climb in hold to 5000.

ATIS 119.525	APP CON 124.875 307.125	TOWER 118.75 290.25	GND CON 123.65 229.8	ASR/PAR
------------------------	-----------------------------------	-------------------------------	--------------------------------	---------



ELEV 690	TDZE 677
----------	----------

A1 P H

WATERTOWN
 109.8 ART
 Chan 35

LOCALIZER 108.5
 I-GTB
 Chan 22

EMERG SAFE ALT 100 NM 7600

1200 5000 ART

VGS1 and ILS glidepath not coincident

I-GTB **1.8** I-GTB **2.7**

SHRAK I-GTB **7** RADAR WITED I-GTB **17** RADAR

2400 209° 5000

GS 3.00° TCH 63

5.2 NM

CATEGORY	FAF to MAP 5.2 NM				
	Knots	120	140	160	180
S-ILS 21*	877-½	200	[200-½]		
S-LOC 21**	1040-¾	363	[400-¾]		
CIRCLING ***	1220-1½	1380-2¼	1640-3		
	530 (600-1½)	690 (700-2¼)	950 (1000-3)		

FORT DRUM, NEW YORK 44°03'N-75°43'W WHEELER-SACK AAF (FORT DRUM) (KGTB)

HI-ILS or LOC RWY 21



NE-2, 11 JUN 2026 to 09 JUL 2026

NE-2, 11 JUN 2026 to 09 JUL 2026

Amtd 2 20APR23