

FORT DRUM, NEW YORK

HI-ILS or LOC RWY 3

WHEELER-SACK AAF (FORT DRUM) (KGTB)

LOC/DME I-AEZ 108.5 Chan 22	APCH CRS 029°	Rwy Idg TDZE Arpt Elev 8631 685 690
---	-------------------------	---

[USA]

DME or RADAR required

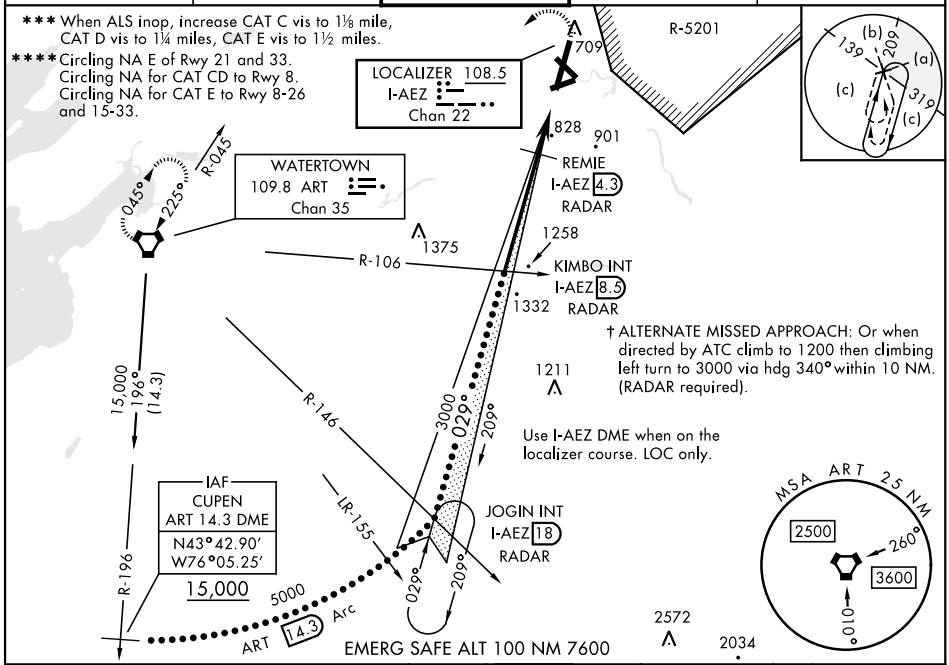
- * When ALS inop, increase vis to ½ mile.
- ** When ALS inop, increase CAT C vis to 2½ miles, CAT D vis to 2¾ miles, CAT E vis to 3 miles.



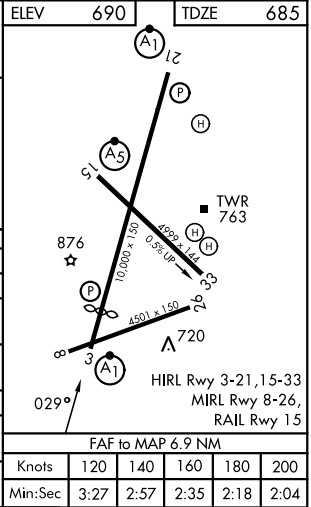
† MISSED APPROACH: Climb to 1200, then climbing left turn to 5000 direct ART VORTAC and hold, continue climb in hold to 5000.

ATIS 119.525	APP CON 124.875 307.125	TOWER 118.75 290.25	GND CON 123.65 229.8	ASR/PAR
------------------------	-----------------------------------	-------------------------------	--------------------------------	---------

- *** When ALS inop, increase CAT C vis to 1½ mile, CAT D vis to 1¼ miles, CAT E vis to 1½ miles.
- **** Circling NA E of Rwy 21 and 33. Circling NA for CAT CD to Rwy 8. Circling NA for CAT E to Rwy 8-26 and 15-33.



JOGIN INT ART R-146 I-AEZ 18 RADAR	KIMBO INT ART R-106 I-AEZ 8.3 RADAR	1200	5000	ART
EMERG SAFE ALT 100 NM 7600		ELEV 690 TDZE 685		
GS 3.00° TCH 66		REMIC I-AEZ 4.3 RADAR		
5000		I-AEZ 2.3		
3000		I-AEZ 1.6		
3000		1560		
4.2 NM		2.7 NM		
CATEGORY	C	D	E	
S-ILS 3*	957-½ 272 (300-½)			
S-LOC 3**	1560-2 875 (900-2)	1560-2¼ 875 (900-2¼)	1560-2½ 875 (900-2½)	
CIRCLING ****	1560-2½ 870 (900-2½)	1560-2¾ 870 (900-2¾)	1640-3 950 (1000-3)	
DME MINIMUMS				
S-LOC 3 ***	1080-¾	395 (400-¾)	1080-1 395 (400-1)	
CIRCLING ****	1220-1½ 530 (600-1½)	1380-2¼ 690 (700-2¼)	1640-3 950 (1000-3)	



NE-2, 11 JUN 2026 to 09 JUL 2026

NE-2, 11 JUN 2026 to 09 JUL 2026

FORT DRUM, NEW YORK

44°03'N-75°43'W

WHEELER-SACK AAF (FORT DRUM) (KGTB)

Amtd 2 20APR23

HI-ILS or LOC RWY 3