

FORT DRUM, NEW YORK

ILS or LOC RWY 21

LOC/DME I-GTB 108.5 Chan 22	APCH CRS 209°	Rwy Idg 10,000 TDZE 677 Arpt Elev 690
---	-------------------------	--

[USA]

WHEELER-SACK AAF (FORT DRUM) (KGTB)

DME or RADAR required

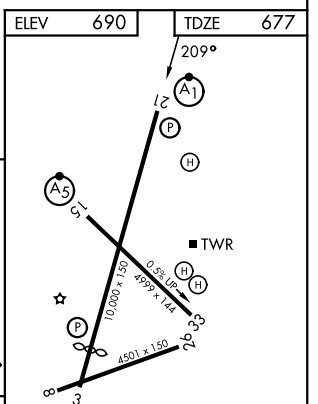
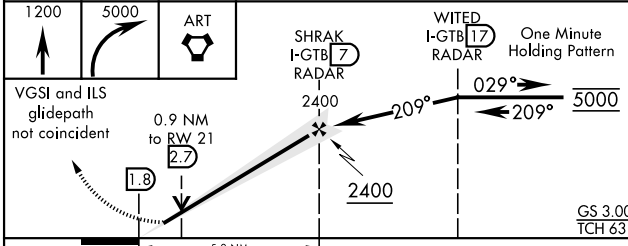
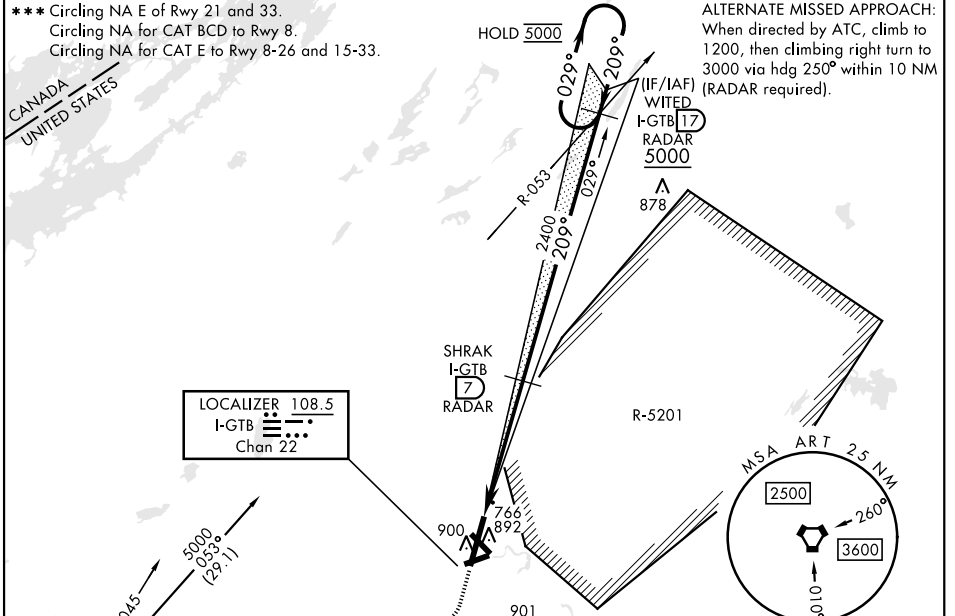
- * When ALS inop, increase vis to ¾ mile.
- ** When ALS inop, increase CAT ABC vis to 1 mile, CAT DE vis to 1 ¼ miles.



MISSED APPROACH: Climb to 1200, then climbing right turn to 5000 direct ART VORTAC and hold. Continue climb-in-hold to 5000.

ATIS 119.525	APP CON 124.875 307.125	TOWER 118.75 290.25	GND CON 123.65 229.8	ASR/PAR
------------------------	-----------------------------------	-------------------------------	--------------------------------	---------

- *** Circling NA E of Rwy 21 and 33.
- Circling NA for CAT BCD to Rwy 8.
- Circling NA for CAT E to Rwy 8-26 and 15-33.



CATEGORY	A	B	C	D	E
S-ILS 21 *		877- ½	200	(200-½)	
S-LOC 21 **	1040-½	363 (400-½)	1040-¾	363 (400-¾)	
CIRCLING ***	1200-1 510 (600-1)	1220-1½	530 (600-1½)	1380-2¼ 690 (700-2¼)	1640-3 950 (1000-3)

FAF to MAP 5.2 NM					
Knots	120	140	160	180	200
Min:Sec	2:36	2:14	1:57	1:44	1:34

FORT DRUM, NEW YORK

44° 03'N-75° 43'W

WHEELER-SACK AAF (FORT DRUM) (KGTB)

Amtd 3 20APR23

ILS or LOC RWY 21

NE-2, 11 JUN 2026 to 09 JUL 2026

NE-2, 11 JUN 2026 to 09 JUL 2026