

FORT DRUM, NEW YORK

RNAV (GPS) RWY 21


WAAS CH 63007 W21A	APCH CRS 209°	Rwy ldg TDZE 10,000 677	Arpt Elev 690
--------------------------	------------------	-------------------------------	------------------

(USA)

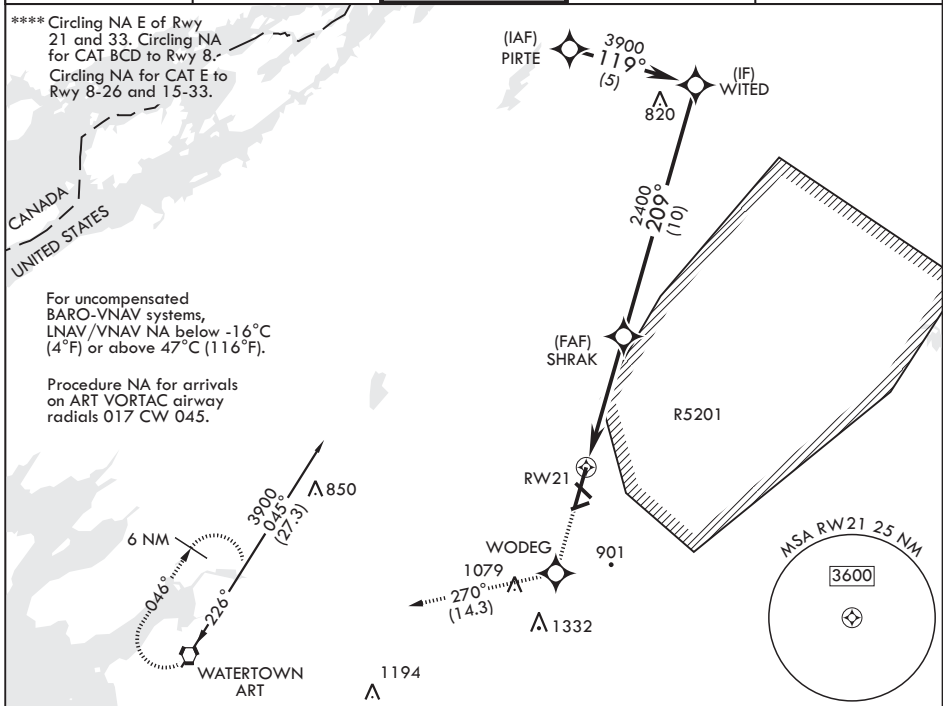
WHEELER SACK AAF (FORT DRUM) (KGTB)


RNP APCH - GPS

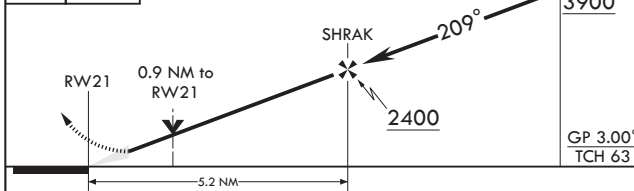
▼ * When ALS inop, increase vis to 3/4 mile.
 ** When ALS inop, increase vis to 1 1/4 miles.
 *** When ALS inop, increase CAT AB vis to 1 mile,
 CAT C vis to 1 1/8 miles, CAT DE vis to 1 1/4 miles.

ALSIF-1  MISSED APPROACH: Climb to 3000 direct WODEG then right turn 270° track to ART VORTAC and hold.

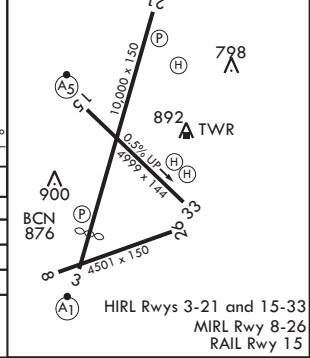
ATIS 119.525	APP CON/DEP CON 124.875 307.125	TOWER 118.75 290.25	GND CON 123.65 229.8	ASR/PAR
-----------------	------------------------------------	------------------------	-------------------------	---------



3000 WODEG  VGSI and RNAV glidepath not coincident.



ELEV 690 209° TDZE 677



CATEGORY	A	B	C	D	E
LPV DA*	877-1/2		200	(200-1/2)	
LNAV/VNAV DA**	1056-3/4		379	(400-3/4)	
LNAV MDA***	1080-1/2	403 (400-1/2)	1080-3/4	403	(400-3/4)
CIRCLING****	1200-1 510 (600-1)	1220-1 530 (600-1)	1220-1 1/2 530 (600-1 1/2)	1380-2 1/4 690 (700-2 1/4)	1640-3 950 (1000-3)

FORT DRUM, NEW YORK
Amdt 2 20APR23

44°03'N - 75°43'W

WHEELER SACK AAF (FORT DRUM) (KGTB)

RNAV (GPS) RWY 21

NE-2, 11 JUN 2026 to 09 JUL 2026

NE-2, 11 JUN 2026 to 09 JUL 2026