

FORT DRUM, NEW YORK

RNAV (GPS) RWY 3

WAAS CH 93714 W03A	APCH CRS 029°	Rwy ldg TDZE Arpt Elev	8631 685 690
--------------------------	------------------	------------------------------	--------------------

(USA)

WHEELER SACK AAF (FORT DRUM) (KGTB)

RNP APCH - GPS

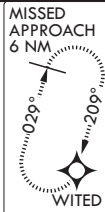
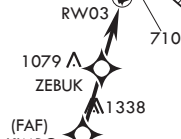
▼ * When ALS inop, increase vis to 3/4 mile.
 ** When ALS inop, increase vis to 1 1/4 miles.
 *** When ALS inop, increase CAT AB vis to 1 mile; CAT C vis to 1 3/8 miles; CAT DE vis to 1 1/2 miles.



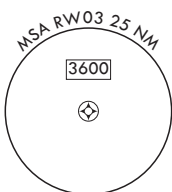
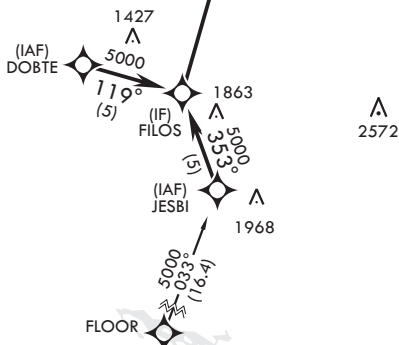
MISSED APPROACH: Climb to 4000 direct WITED and hold.

ATIS 119.525	APP CON/DEP CON 124.875 307.125	TOWER 118.75 290.25	GND CON 123.65 229.8	ASR/PAR
-----------------	------------------------------------	------------------------	-------------------------	---------

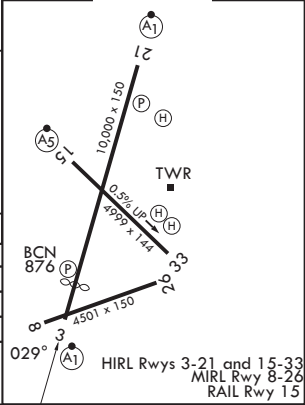
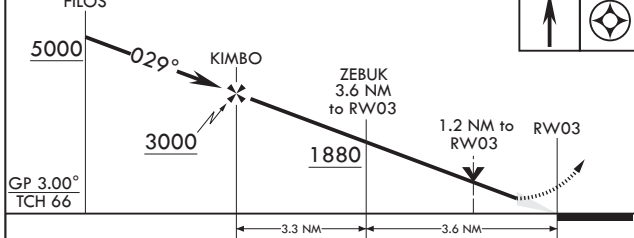
**** Circling NA E of Rwy 21 and 33. Circling NA for CAT BCD to Rwy 8.
 Circling NA for CAT E to Rwy 8-26 and 15-33.



For uncompensated Baro-VNAV systems, LNAV/VNAV NA below -16°C (4°F) or above 48°C (118°F).



FILOS	4000	WITED	ELEV 690	TDZE 685
-------	------	-------	----------	----------



CATEGORY	A	B	C	D	E
LPV DA*	885-1/2		200	(200-1/2)	
LNAV/VNAV DA**	1080-3/4		395	(400-3/4)	
LNAV MDA***	1160-1/2 475 (500-1/2)		1160-1	475 (500-1)	
CIRCLING****	1200-1 510 (600-1)		1220-1 1/2 530 (600-1 1/2)	1380-2 1/4 690 (700-2 1/4)	1640-3 950 (1000-3)

FORT DRUM, NEW YORK
 Amdt 2 20APR23

44°03'N - 75°43'W

WHEELER SACK AAF (FORT DRUM) (KGTB)

RNAV (GPS) RWY 3

NE-2, 11 JUN 2026 to 09 JUL 2026

NE-2, 11 JUN 2026 to 09 JUL 2026