

RNAV (GPS) RWY 33

APCH CRS 327°
 Rwy Idg 4999
 TDZE 688
 Arprt Elev 690

(USA)

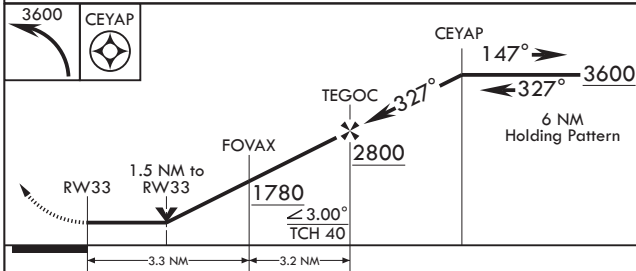
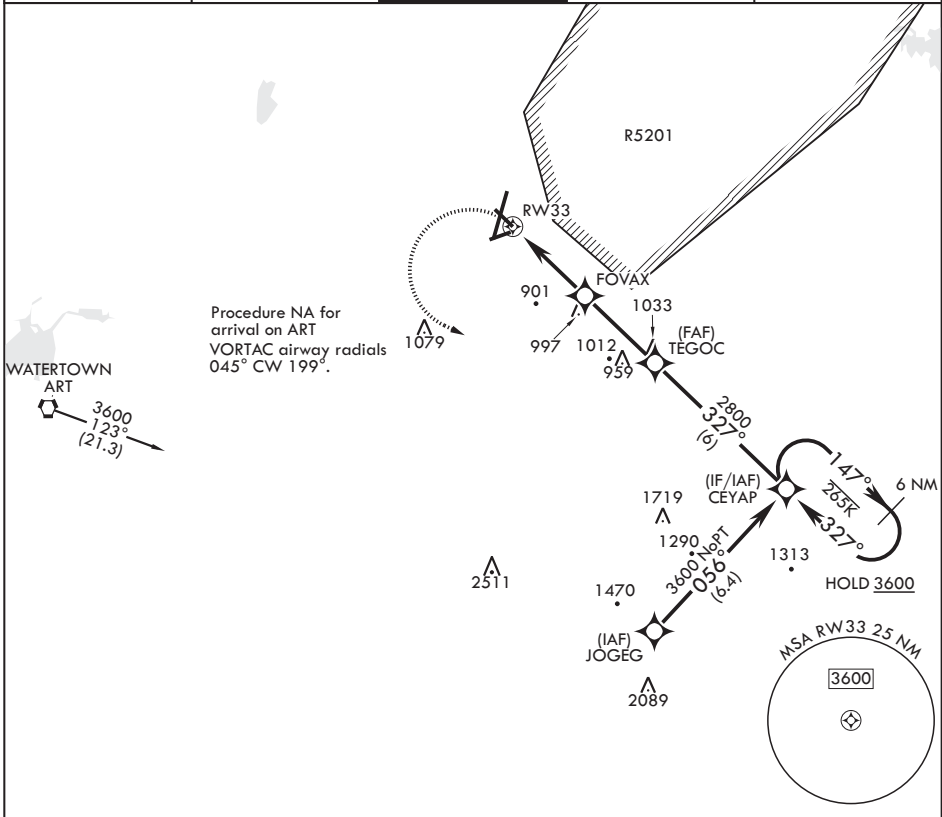
WHEELER SACK AAF (FORT DRUM) (KGTB)

RNP APCH - GPS

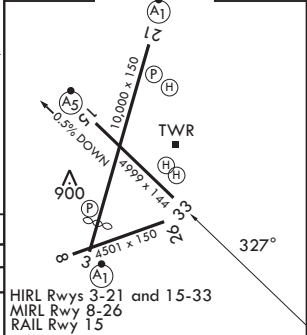
MISSED APPROACH: Climbing left turn to 3600
 direct CEYAP and hold.

* LNAV visibility reduction by helicopters NA.
 ** Circling NA for CAT BCD to Rwy 8. Circling NA E of Rwy 21 and 33.

ATIS 119.525	APP CON/DEP CON 124.875 307.125	TOWER 118.75 290.25	GND CON 123.65 229.8	ASR/PAR
-----------------	------------------------------------	------------------------	-------------------------	---------



ELEV 690 TDZE 688



CATEGORY	A	B	C	D
LNAV MDA*	1200-1 510 (600-1)	1240-1 510 (600-1)	1280-1½ 510 (600-1½)	1460-2½ 510 (600-1½)
CIRCLING**	1200-1 510 (600-1)	1240-1 550 (600-1)	1280-1½ 590 (600-1½)	1460-2½ 770 (800-2½)

RNAV (GPS) RWY 33

NE-2, 11 JUN 2026 to 09 JUL 2026

NE-2, 11 JUN 2026 to 09 JUL 2026