

(STYCK8.STYCK) 21280

AL-5757 (FAA)

BAYTOWN (HPY)

STYCK EIGHT DEPARTURE (RNAV)

BAYTOWN, TEXAS

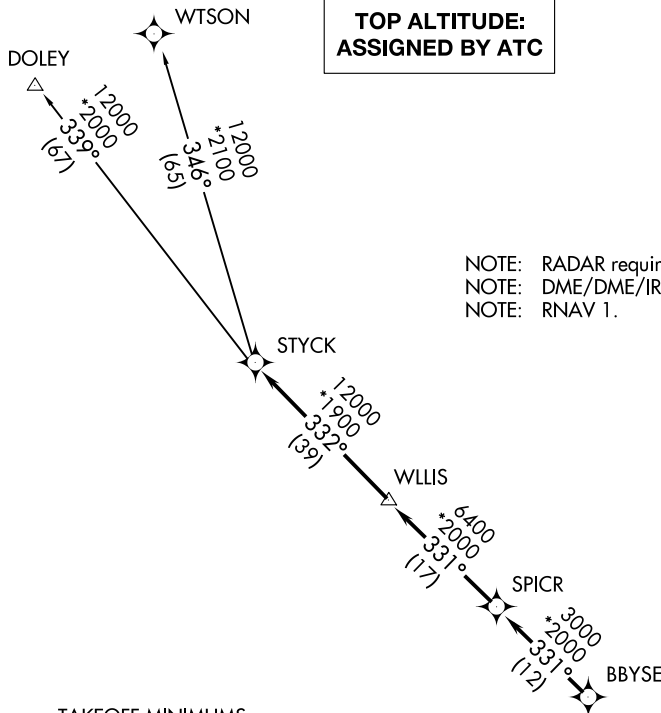
CTAF

122.8

HOUSTON DEP CON

134.45 284.0

**TOP ALTITUDE:
ASSIGNED BY ATC**



NOTE: RADAR required.
 NOTE: DME/DME/IRU or GPS required.
 NOTE: RNAV 1.

TAKEOFF MINIMUMS

Rwys 14, 32: Standard with minimum climb of 500' per NM to 540.

NOTE: Chart not to scale.



DEPARTURE ROUTE DESCRIPTION

TAKEOFF RUNWAY 14: Climb on heading 140° to 540 for RADAR vectors to BBYSE, thence...
TAKEOFF RUNWAY 32: Climb on heading 320° to 540 for RADAR vectors to BBYSE, thence...
 ...on track 331° to SPICR, then on track 331° to WLLIS, then on track 332° to STYCK, then on (transition). Maintain ATC assigned altitude. Expect filed altitude 10 minutes after departure.

DOLEY TRANSITION (STYCK8.DOLEY)

WTSON TRANSITION (STYCK8.WTSON)

STYCK EIGHT DEPARTURE (RNAV)

(STYCK8.STYCK) 07OCT21

BAYTOWN, TEXAS

BAYTOWN (HPY)

SC-5, 11 JUN 2026 to 09 JUL 2026

SC-5, 11 JUN 2026 to 09 JUL 2026