

|  |                        |                             |   |
|--|------------------------|-----------------------------|---|
| WAAS<br>CH <b>97409</b><br><b>W32A</b> | APP CRS<br><b>321°</b> | Rwy Idg<br>TDZE<br>Apt Elev | <b>4203</b><br><b>2534</b><br><b>2546</b> |
|--|------------------------|-----------------------------|---|

# RNAV (GPS) RWY 32

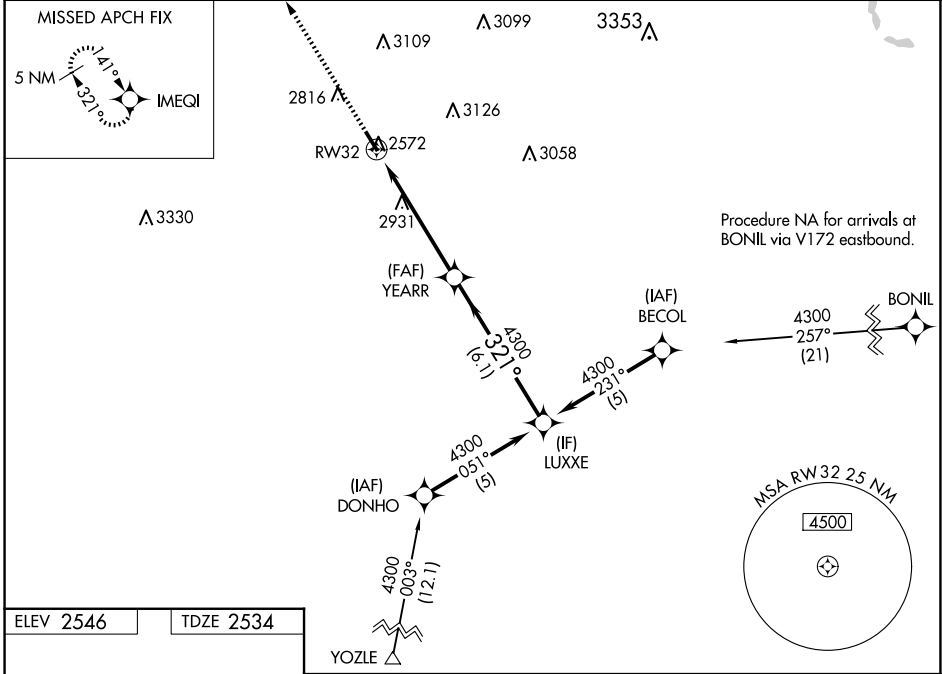
BROKEN BOW MUNI/KEITH GLAZE FLD (BBW)

RNP APCH.

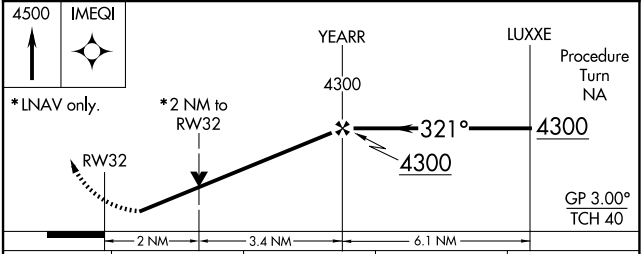
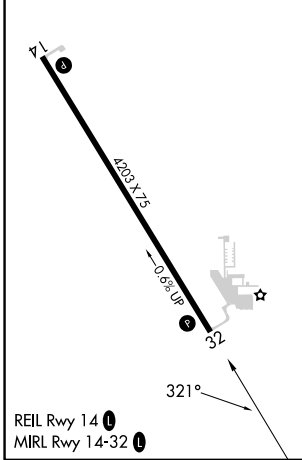
▼ For uncompensated Baro-VNAV systems, LNAV/VNAV NA below -20°C or above 54°C. When local altimeter setting not received, use North Platte Rgnl/Lee Bird Fld altimeter setting and increase all DA/MDA 160 feet and increase LPV all Cats visibility ¾ mile, increase LNAV/VNAV all Cats visibility 1¼ mile, increase LNAV and Circling Cat B visibility ½ mile. VDP and Baro/VNAV NA when using North Platte Rgnl/Lee Bird Fld altimeter setting. Rwy 32 helicopter visibility reduction below ¾ SM NA.

MISSED APPROACH:  
Climb to 4500 direct  
IMEQI and hold.

|                      |                                       |                                 |
|----------------------|---------------------------------------|---------------------------------|
| ASOS<br><b>120.0</b> | DENVER CENTER<br><b>132.7 226.675</b> | UNICOM<br><b>122.8 (CTAF) 0</b> |
|----------------------|---------------------------------------|---------------------------------|



|           |           |
|-----------|-----------|
| ELEV 2546 | TDZE 2534 |
|-----------|-----------|



| CATEGORY     | A       | B            | C | D  |
|--------------|---------|--------------|---|----|
| LPV DA       | 2833-1  | 299 (300-1)  |   | NA |
| LNAV/VNAV DA | 3301-2¾ | 767 (800-2¾) |   | NA |
| LNAV MDA     | 3200-1  | 666 (700-1)  |   | NA |
| CIRCLING     | 3200-1  | 654 (700-1)  |   | NA |

NC-2, 11 JUN 2026 to 09 JUL 2026

NC-2, 11 JUN 2026 to 09 JUL 2026