

VOR/DME CUZ 108.2 Chan 19	APP CRS 135°	Rwy Idg 4203 TDZE 2546 Apt Elev 2546
---	------------------------	---

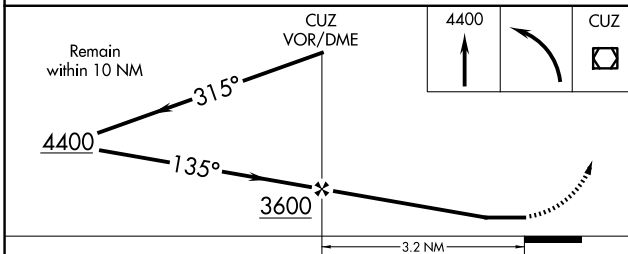
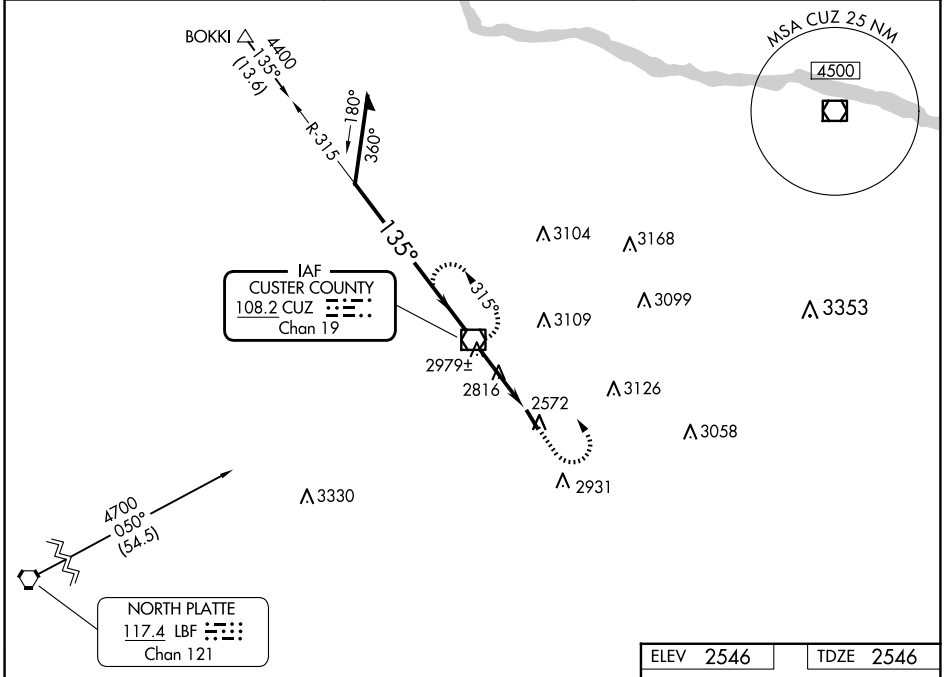
VOR RWY 14

BROKEN BOW MUNI/KEITH GLAZE FLD (BBW)

⚠ When local altimeter setting not received; use North Platte Rgnl/Lee Bird Fld altimeter setting. Rwy 14 helicopter visibility reduction below 3/4 SM NA.

⚠ MISSED APPROACH: Climb to 4400 then left turn direct CUZ VOR/DME and hold.

ASOS 120.0	DENVER CENTER 132.7 226.675	UNICOM 122.8 (CTAF) 0
----------------------	---------------------------------------	---------------------------------



ELEV 2546	TDZE 2546
-----------	-----------

135°

4203.75

0.652 UP

3.2 NM

NORTH PLATTE RGNL/LEE BIRD FLD ALTIMETER SETTING MINIMUMS				
S-14	3380-1 834 (900-1)	3380-1¼ 834 (900-1¼)	NA	
CIRCLING	3440-1¼	894 (900-1¼)	NA	

REIL Rwy 14 0					
MIRL Rwy 14-32 0					
FAF to MAP 3.2 NM					
Knots	60	90	120	150	180
Min:Sec	3:12	2:08	1:36	1:17	1:04

NC-2, 11 JUN 2026 to 09 JUL 2026

NC-2, 11 JUN 2026 to 09 JUL 2026