

VOR/DME CUZ 108.2 Chan 19	APP CRS 316°	Rwy Idg TDZE Apt Elev	4203 2534 2546
---	------------------------	-----------------------------	---

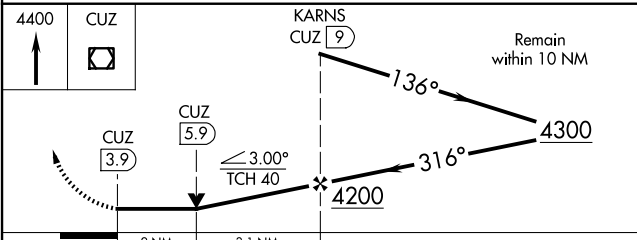
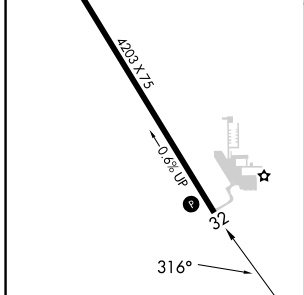
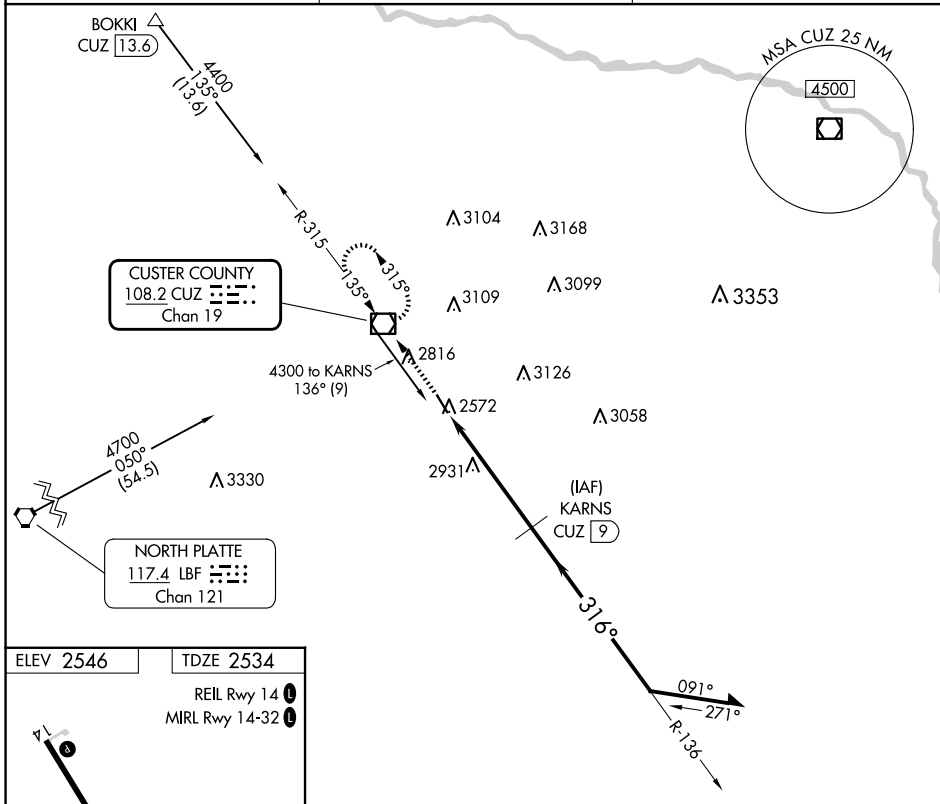
VOR/DME RWY 32

BROKEN BOW MUNI/KEITH GLAZE FLD (BBW)

⚠ When local altimeter setting not received; use North Platte Rgnl/Lee Bird Fld altimeter setting and increase all MDAs 160 feet, increase Cat B visibility to 1¼ miles, and Circling Cat B visibility to 1¼ miles. VDP NA when using North Platte Rgnl/Lee Bird Fld altimeter setting. Rwy 32 helicopter visibility reduction below ¾ SM NA.

MISSED APPROACH: Climb to 4400 direct CUZ VOR/DME and hold.

ASOS 120.0	DENVER CENTER 132.7 226.675	UNICOM 122.8 (CTAF) 0
----------------------	---------------------------------------	---------------------------------



CATEGORY	A	B	C	D
S-32	3200-1	666 (700-1)	NA	
CIRCLING	3200-1	654 (700-1)	NA	

FAF to MAP 5.1 NM

Knots	60	90	120	150	180
Min:Sec	5:06	3:24	2:33	2:02	1:42

NC-2, 11 JUN 2026 to 09 JUL 2026

NC-2, 11 JUN 2026 to 09 JUL 2026