

| | | | |
|--|------------------------|-----------------------------|---|
| WAAS CH 77733 W35A | APP CRS 348° | Rwy Ldg TDZE Apt Elev | 4990 159 162 |
|--|------------------------|-----------------------------|---|

RNAV (GPS) RWY 35

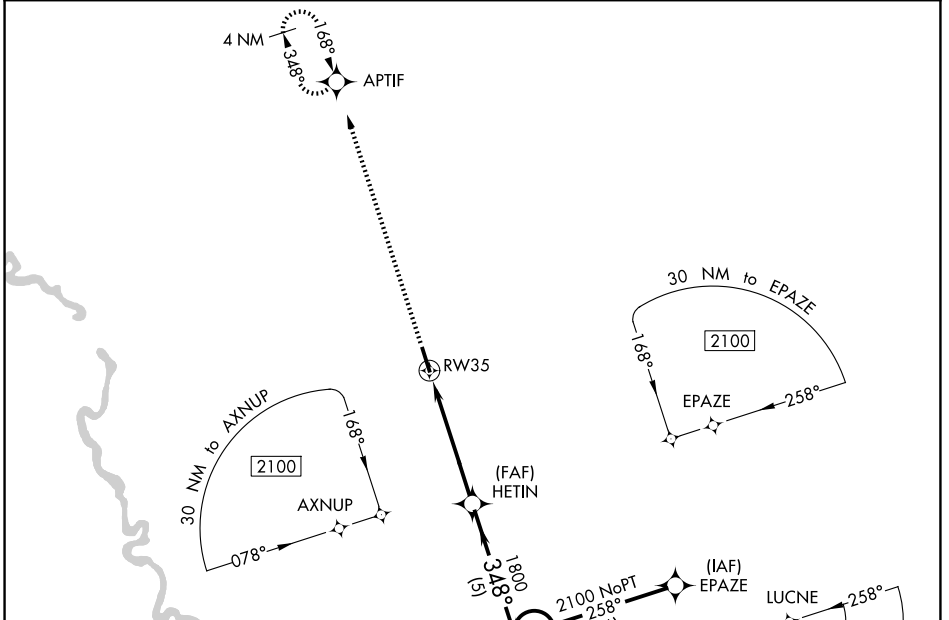
ALLENDALE COUNTY (A.Q.X)

RNP APCH.

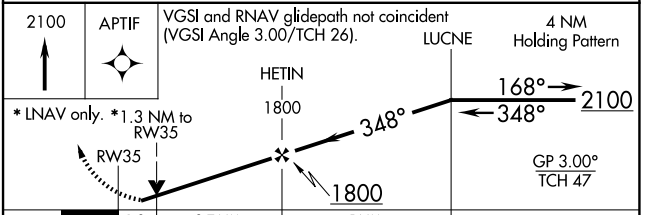
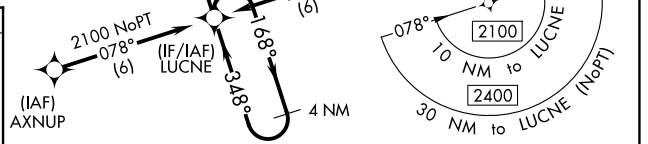
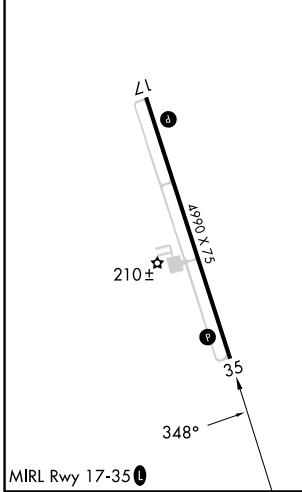
▼ For uncompensated Baro-VNAV systems, LNAV/VNAV NA below -15°C or above 54°C. When local altimeter setting not received, use Augusta Rgnl at Bush Fld altimeter setting and increase all DA 99 feet and all MDA 100 feet, increase LPV, LNAV/VNAV all Cats visibility 3/8 mile. Baro-VNAV and VDP NA when using Augusta Rgnl at Bush Fld altimeter setting.

▲ MISSED APPROACH: Climb to 2100 direct APTIF and hold.

| | | |
|---------------------------|---|---------------------------------|
| AWOS-3PT 118.95 | JACKSONVILLE CENTER 132.925 363.2 | UNICOM 122.8 (CTAF) 0 |
|---------------------------|---|---------------------------------|



| | |
|----------|----------|
| ELEV 162 | TDZE 159 |
|----------|----------|



| CATEGORY | A | B | C | D |
|--------------|----------------------|----------------------|---|----|
| LPV DA | 409-1 | 250 (300-1) | | NA |
| LNAV/VNAV DA | 591-1½ | 432 (500-1½) | | NA |
| LNAV MDA | 600-1 | 441 (500-1) | | NA |
| CIRCLING | 620-1 458 (500-1) | 640-1 478 (500-1) | | NA |

SE-2, 11 JUN 2026 to 09 JUL 2026

SE-2, 11 JUN 2026 to 09 JUL 2026