

LOC I-UGZ <b>111.9</b>	APP CRS <b>227°</b>	Rwy Idg TDZE Apt Elev	<b>5501</b> <b>134</b> <b>134</b>
---------------------------	------------------------	-----------------------------	---

# ILS or LOC RWY 23

WAYNE EXEC JETPORT (GWW)

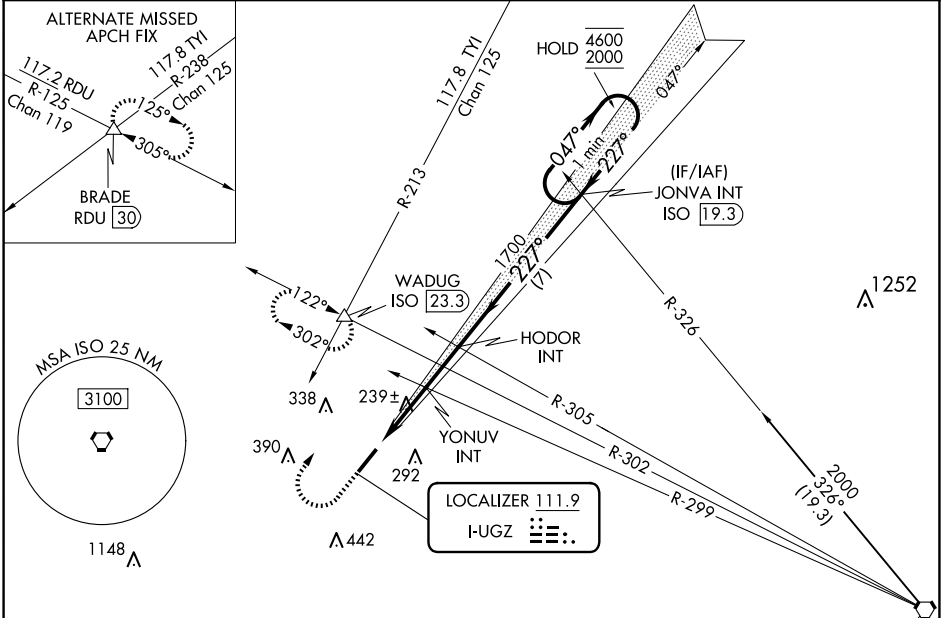
DME or RADAR required.

**⚠** When local altimeter setting not received, use Smithfield altimeter setting and increase DA to 388 and all MDAs 60 feet, increase S-LOC Cats C/D visibility ¼ SM, Circling Cats C/D ½ SM. Inop table does not apply to S-ILS 23.

**ODALS**

**MISSED APPROACH:** Climb to 900 then climbing right turn to 2000 on heading 040° and on ISO VORTAC R-302 to WADUG INT/ISO 23.3 DME and hold.

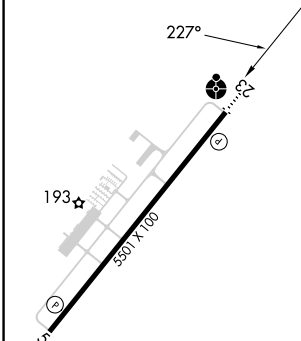
AWOS-3P <b>118.975</b>	SEYMOUR JOHNSON APP CON ★ <b>121.175 290.9</b>	UNICOM <b>122.975 (CTAF) 0</b>
---------------------------	---	-----------------------------------



SE-2, 11 JUN 2026 to 09 JUL 2026

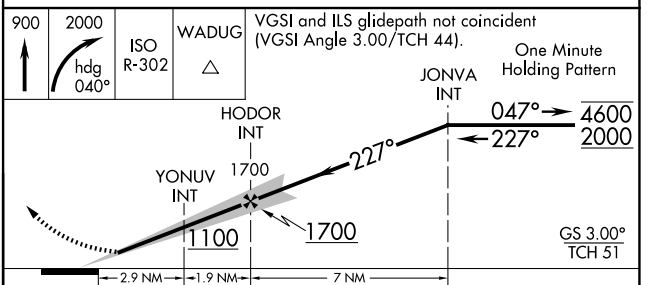
SE-2, 11 JUN 2026 to 09 JUL 2026

ELEV 134	TDZE 134
----------	----------



REIL Rwy 5 and 23 **0**  
MIRL Rwy 5-23 **0**

FAF to MAP 4.8 NM					
Knots	60	90	120	150	180
Min:Sec	4:48	3:12	2:24	1:55	1:36



CATEGORY	A		B		C		D	
S-ILS 23	334-¾		200 (200-¾)					
S-LOC 23	500-¾		366 (400-¾)		500-1		366 (400-1)	
CIRCLING	580-1 446 (500-1)		640-1 506 (600-1)		760-1¾ 626 (700-1¾)		760-2 626 (700-2)	