

WAAS CH 70320 W23A	APP CRS 227°	Rwy ldg TDZE 133 Apt Elev 133	5501
--	------------------------	---	-------------

RNAV (GPS) RWY 23

WAYNE EXEC JETPORT (GWW)

RNP APCH

▼ Baro-VNAV NA when using Smithfield altimeter setting. For uncompensated Baro-VNAV systems, LNAV/VNAV NA below -15°C (5°F) or above 43°C (109°F). VDP NA with Smithfield altimeter setting. When local altimeter setting not received, use Smithfield altimeter setting and increase LPV DA to 387 feet, LNAV/VNAV DA to 499 feet and all MDA 60 feet, increase LNAV/VNAV all Cats and LNAV Cats C/D visibilities ½ SM, and Circling Cat C/D ¼ SM. For inop ALS when using Smithfield altimeter setting, increase LNAV/VNAV visibility all Cats to 1 SM and LNAV visibility Cats A/B to 1 SM and Cats C/D to 1½ SM.

ODALS

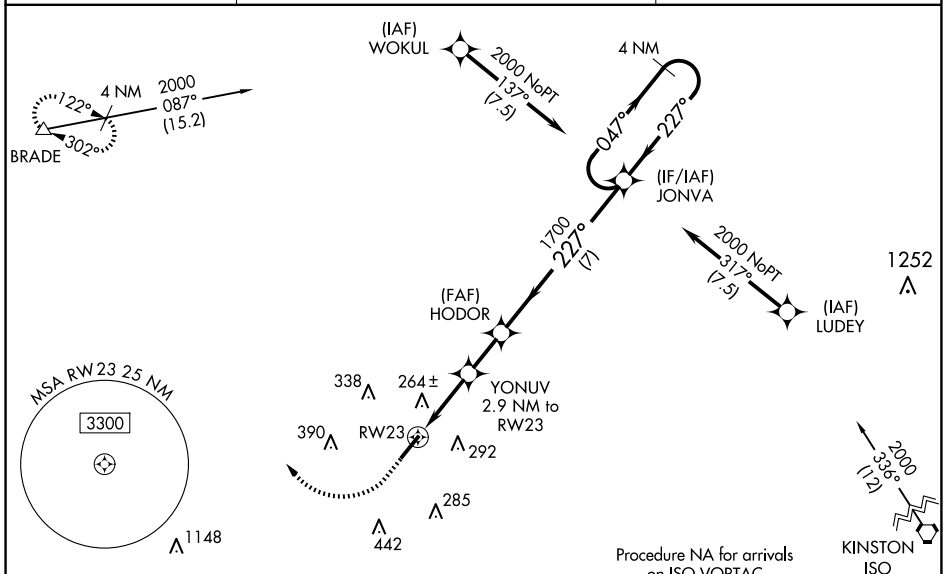


MISSED APPROACH:
Climb to 600 then climbing right turn to 2000 direct BRADE and hold.

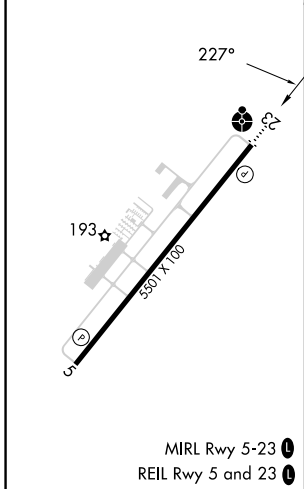
AWOS-3P
118.975

SEYMOUR JOHNSON APP CON ★
121.175 290.9

UNICOM
122.975 (CTAF) 0



ELEV 133	TDZE 133
----------	----------



	600	2000	BRADE	VGSI and RNAV glidepath not coincident (VGSI Angle 3.00/TCH 44).	4 NM Holding Pattern
	*LNAV only.		YONU 2.9 NM to RWY 23	HODOR 1700	JONVA 047° 2000
	1.1 NM to RWY 23		RWY 23	1100	1700
	1.1	1.8 NM	1.9 NM	7 NM	
CATEGORY	A		B	C	D
LPV DA			333-¾	200 (200-¾)	
LNAV/VNAV DA			445-¾	312 (400-¾)	
LNAV MDA	520-¾		387 (400-¾)	520-1	387 (400-1)
CIRCLING	580-1	447 (500-1)	640-1	507 (600-1)	760-2 627 (700-2)
				760-1¾	627 (700-1¾)

SE-2, 11 JUN 2026 to 09 JUL 2026

SE-2, 11 JUN 2026 to 09 JUL 2026