

WAAS CH 99624 W05A	APP CRS 047°	Rwy Idg TDZE Apt Elev	5501 132 133
--	------------------------	-----------------------------	---

RNAV (GPS) RWY 5

WAYNE EXEC JETPORT (GWW)

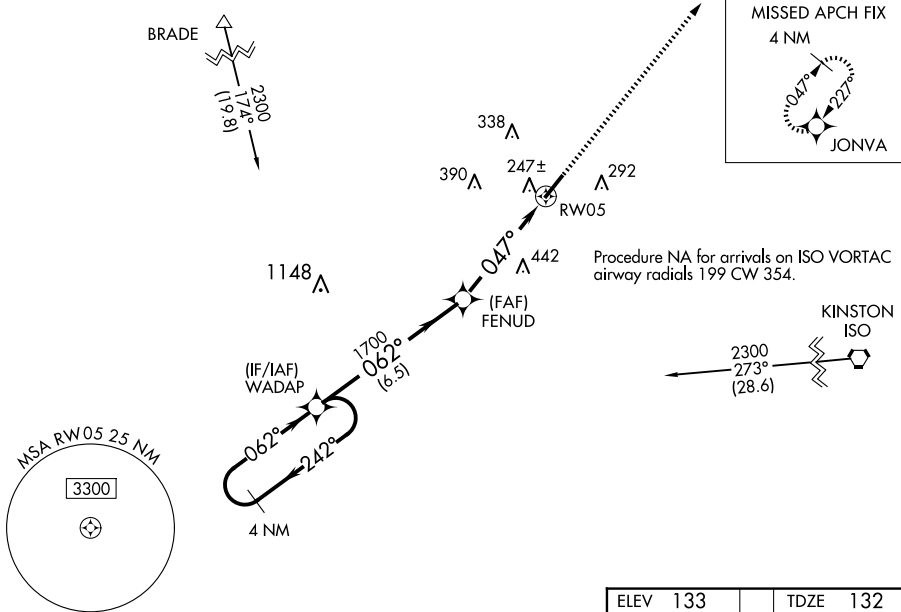
⚠ Baro-VNAV NA when using Smithfield altimeter setting. For uncompensated Baro-VNAV systems, LNAV/VNAV NA below -15°C (5°F) or above 43°C (109°F). DME/DME RNP-0.3 NA.
⚠ Helicopter visibility reduction below ¼ SM NA. VDP NA with Smithfield altimeter setting.
 When local altimeter setting not received, use Smithfield altimeter setting and increase LPV DA to 490 feet, LNAV/VNAV DA to 462 and all MDA 60 feet, increase LPV and LNAV/VNAV all Cts visibility ½ SM, and Circling visibility Cat C/D ¼ SM.

MISSED APPROACH:
 Climb to 2000 direct JONVA and hold.

AWOS-3P
118.975

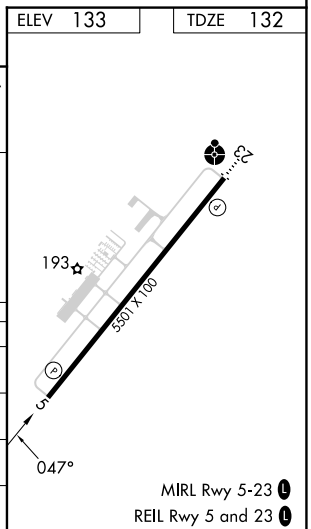
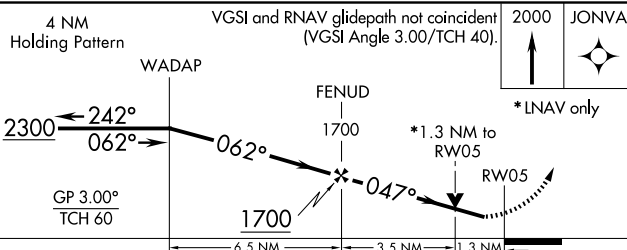
SEYMOUR JOHNSON APP CON *
121.175 290.9

UNICOM
122.975 (CTAF) 0



SE-2, 11 JUN 2026 to 09 JUL 2026

SE-2, 11 JUN 2026 to 09 JUL 2026



CATEGORY	A	B	C	D
LPV DA		436-1	304 (400-1)	
LNAV/VNAV DA		408-7/8	276 (300-7/8)	
LNAV MDA	580-1	448 (500-1)	580-13/8	448 (500-13/8)
CIRCLING	580-1 447 (500-1)	640-1 507 (600-1)	760-13/4 627 (700-13/4)	760-2 627 (700-2)