

VOR ECS 108.2	APP CRS 323°	Rwy Ldg TDZE Apt Elev	5310 4176 4176
-------------------------	------------------------	-----------------------------	---

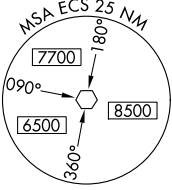
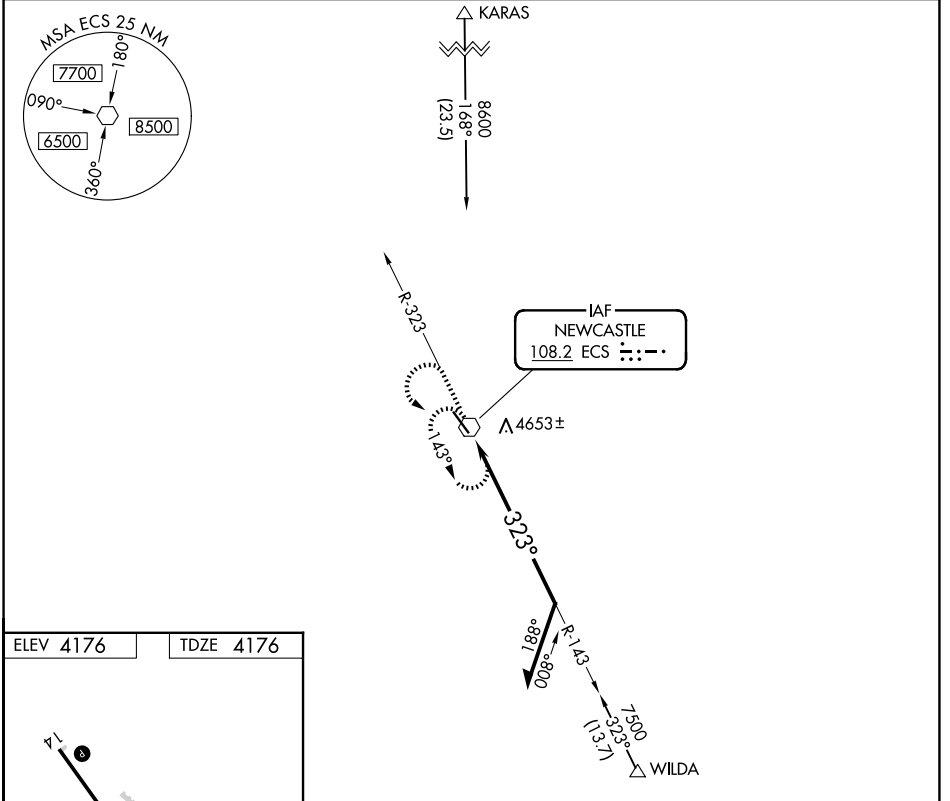
VOR RWY 32

MONDELL FLD (ECS)

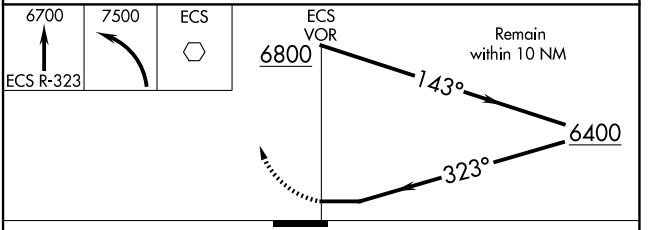
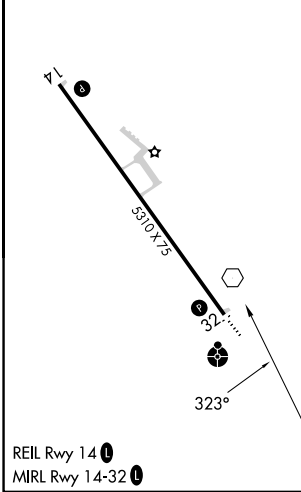
⚠ When Newcastle altimeter setting not received, procedure NA. Circling NA northeast of Rwy 14-32.

ODALS MISSED APPROACH: Climb to 6700 on ECS VOR R-323 then climbing left turn to 7500 direct ECS VOR and hold, continue climb-in-hold to 7500.

AWOS-3PT 118.0	DENVER CENTER 127.95 338.2	UNICOM 122.8 (CTAF) 0
--------------------------	--------------------------------------	---------------------------------



ELEV 4176	TDZE 4176
-----------	-----------



CATEGORY	A	B	C	D
S-32	4980- ³ / ₄ 804 (900- ³ / ₄)	4980-1 804 (900-1)	4980-2 ¹ / ₂	804 (900-2 ¹ / ₂)
CIRCLING	4980-1 804 (900-1)	4980-1 ¹ / ₄ 804 (900-1 ¹ / ₄)	4980-2 ¹ / ₂ 804 (900-2 ¹ / ₂)	5000-2 ³ / ₄ 824 (900-2 ³ / ₄)

NW-1, 11 JUN 2026 to 09 JUL 2026

NW-1, 11 JUN 2026 to 09 JUL 2026