

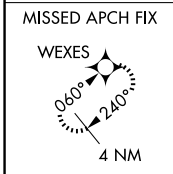
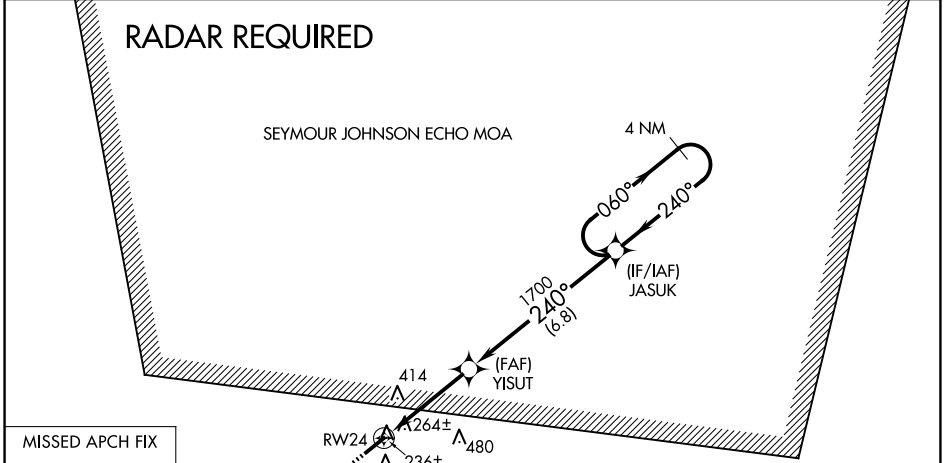
WAAS CH <b>82620</b> <b>W24A</b>	APP CRS <b>240°</b>	Rwy Idg TDZE Apf Elev	<b>5008</b> <b>144</b> <b>144</b>
--	------------------------	-----------------------------	---

# RNAV (GPS) Z RWY 24

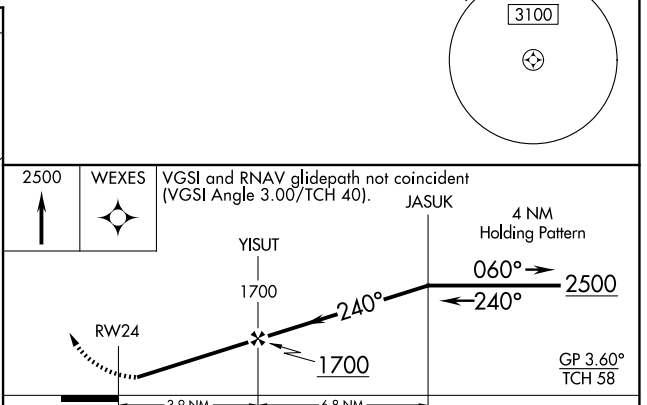
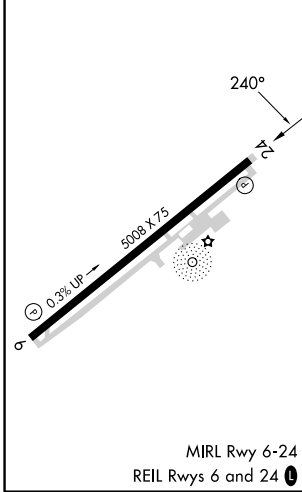
CLINTON-SAMPSON COUNTY (CTZ)

RNP APCH-GPS.	<p>▼ Baro-VNAV NA when using DPL altimeter setting. For uncompensated Baro-VNAV systems, LNAV/VNAV NA below -15°C or above 46°C. When local altimeter setting not received, use DPL altimeter setting and increase all DA 45 feet, increase LNAV/VNAV Cats A/B/C visibility 1/8 mile. Rwy 24 helicopter visibility reduction below 3/4 SM NA.</p>	<p>MISSED APPROACH: Climb to 2500 direct WEXES and hold.</p>
---------------	---	--

AWOS-3 <b>119.125</b>	FAYETTEVILLE APP CON <b>133.0 290.25</b>	UNICOM <b>122.8 (CTAF) 0</b>
--------------------------	---	---------------------------------



ELEV <b>144</b>	TDZE <b>144</b>
-----------------	-----------------



CATEGORY	A	B	C	D
LPV DA	470-1		326 (400-1)	NA
LNAV/VNAV DA	566-1 1/4		422 (500-1 1/4)	NA

SE-2, 11 JUN 2026 to 09 JUL 2026

SE-2, 11 JUN 2026 to 09 JUL 2026