

WAAS CH <b>42901</b> <b>W18A</b>	APP CRS <b>185°</b>	Rwy Ldg TDZE <b>730</b> Apt Elev <b>730</b>	<b>5801</b>
--	------------------------	---	-------------

# RNAV (GPS) RWY 18

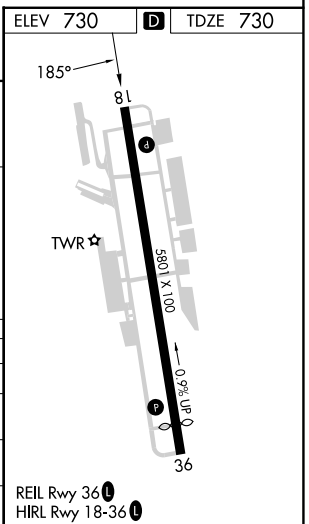
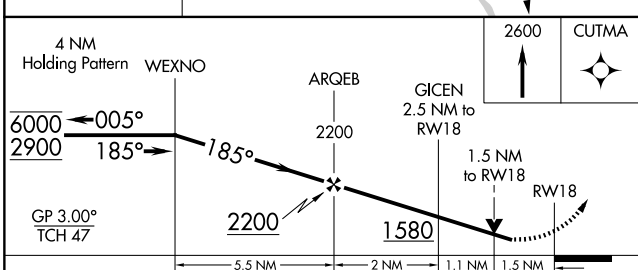
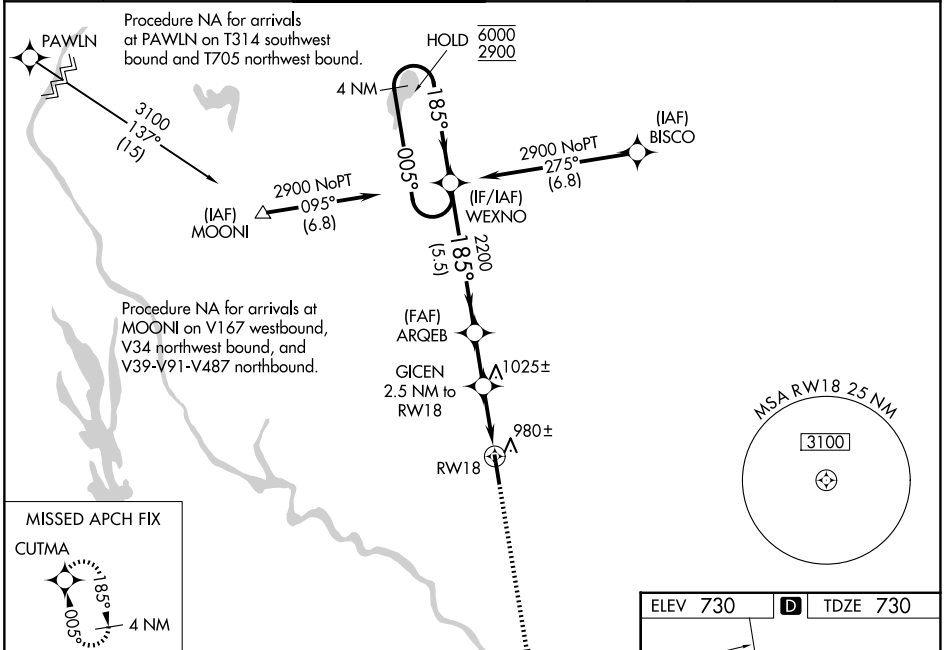
WATERBURY-OXFORD (OXC)

RNP APCH - GPS.

**⚠** Rwy 18 helicopter visibility reduction below 3/4 SM NA. For uncompensated Baro-VNAV systems, LNAV/VNAV NA below -17°C or above 54°C. Baro-VNAV and VDP NA when using DXR altimeter setting. When local altimeter setting not received, use DXR altimeter setting: increase LPV DA to 1218 feet and all visibilities 1/4 SM; increase LNAV/VNAV DA to 1219 feet and all visibilities 1/4 SM; increase all MDAs 80 feet and LNAV visibility Cat C and D 3/8 SM, and Circling visibility Cat C and D 1/4 SM.

**MISSED APPROACH:** Climb to 2600 direct CUTMA and hold.

ATIS <b>132.975</b>	NEW YORK APP CON <b>124.075 343.65</b>	OXFORD TOWER * <b>118.475</b> (CTAF) <b>0</b>	GND CON <b>121.65</b>	CLNC DEL <b>121.65</b>	CLNC DEL <b>135.1</b> (When twr closed)	UNICOM <b>122.95</b>
------------------------	---	--	--------------------------	---------------------------	---	-------------------------



CATEGORY	A	B	C	D
LPV DA	1140-1 1/8		410 (500-1 1/8)	
LNAV/VNAV DA	1141-1 1/8		411 (500-1 1/8)	
LNAV MDA	1240-1 510 (600-1)		1240-1 3/8 510 (600-1 3/8)	
CIRCLING	1360-1 630 (700-1)		1380-1 3/4 650 (700-1 3/4) 1460-2 1/4 730 (800-2 1/4)	

NE-1, 11 JUN 2026 to 09 JUL 2026

NE-1, 11 JUN 2026 to 09 JUL 2026