

WAAS CH <b>72922</b> <b>W36A</b>	APP CRS <b>005°</b>	Rwy Ldg <b>5301</b> TDZE <b>721</b> Apt Elev <b>730</b>
--	------------------------	---

# RNAV (GPS) RWY 36

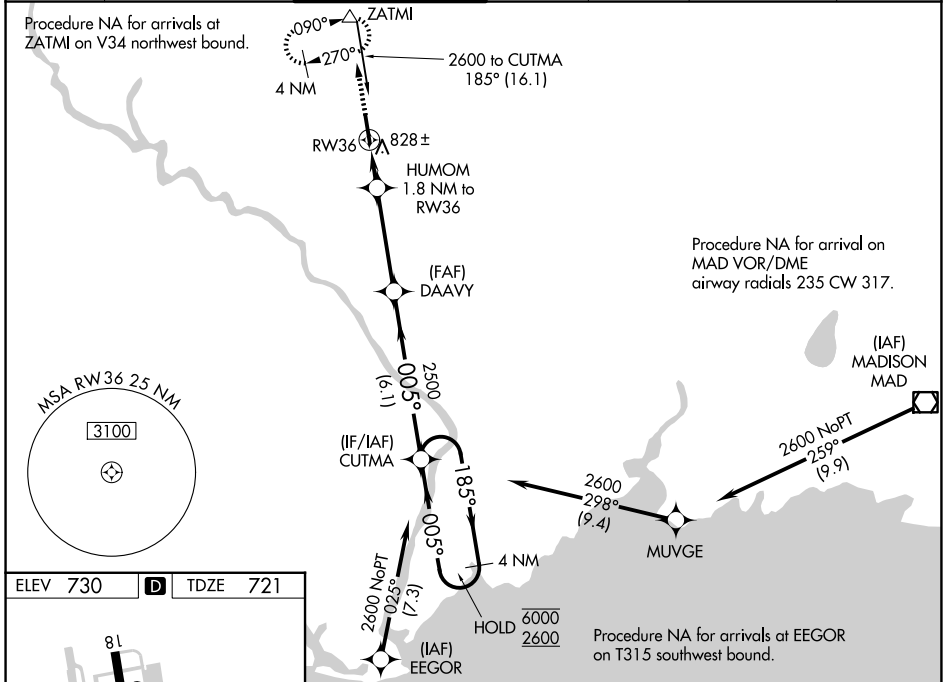
WATERBURY-OXFORD (OXC)

RNP APCH - GPS.

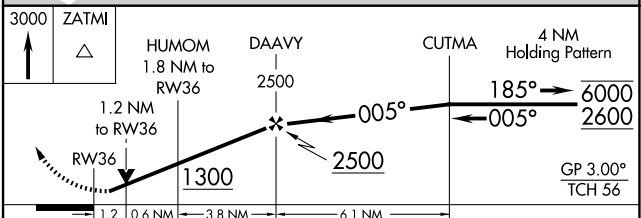
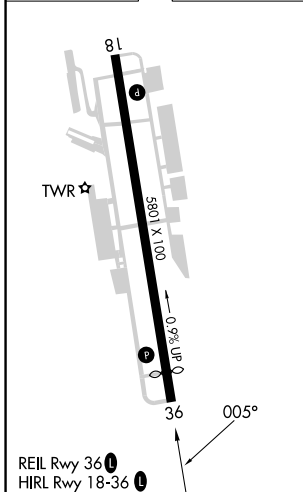
**⚠** Rwy 36 helicopter visibility reduction below 3/4 SM NA. For uncompensated Baro-VNAV systems, LNAV/VNAV NA below -17°C or above 54°C. Baro-VNAV and VDP NA when using DXR altimeter setting. When local altimeter setting not received, use DXR altimeter setting: increase LPV DA to 1049 feet and all visibilities 1/4 SM; increase LNAV/VNAV DA to 1175 feet and all visibilities 3/8 SM; increase all MDAs 80 feet and LNAV visibility Cats C and D 1/8 SM, and Circling visibility Cats C and D 1/4 SM.

**MISSED APPROACH:**  
Climb to 3000 direct ZATMI and hold, continue climb-in-hold to 3000.

ATIS <b>132.975</b>	NEW YORK APP CON <b>124.075 343.65</b>	OXFORD TOWER * <b>118.475 (CTAF) 0</b>	GND CON <b>121.65</b>	CLNC DEL <b>121.65</b>	CLNC DEL <b>135.1</b> (When twr closed)	UNICOM <b>122.95</b>
------------------------	---	---	--------------------------	---------------------------	---	-------------------------



ELEV 730	<b>D</b>	TDZE 721
----------	----------	----------



CATEGORY	A	B	C	D
LPV DA		971-3/4	250 (300-3/4)	
LNAV/VNAV DA		1097-1	376 (400-1)	
LNAV MDA	1120-1	399 (400-1)	1120-1 1/8	399 (400-1 1/8)
CIRCLING	1360-1	630 (700-1)	1380-1 3/4 650 (700-1 3/4)	1460-2 1/4 730 (800-2 1/4)

NE-1, 11 JUN 2026 to 09 JUL 2026

NE-1, 11 JUN 2026 to 09 JUL 2026