

WAAS CH <b>45507</b> <b>W15A</b>	APP CRS <b>153°</b>	Rwy Ldg TDZE Apr Elev	<b>6001</b> <b>82</b> <b>82</b>
----------------------------------------	------------------------	-----------------------------	---------------------------------------

# RNAV (GPS) RWY 15

KISSIMMEE GATEWAY (ISM)

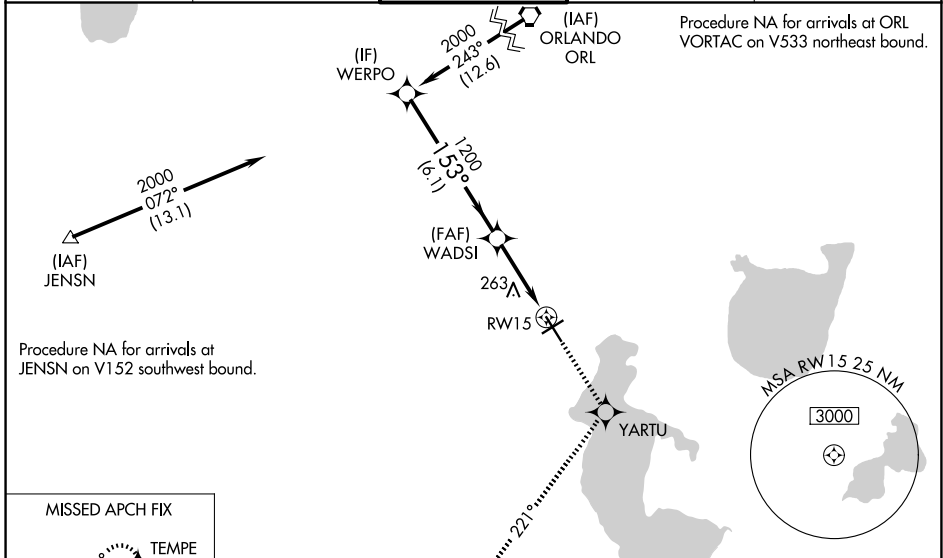
RNP APCH - GPS.

⚠ Baro-VNAV and VDP NA when using MCO altimeter setting. For uncompensated Baro-VNAV systems, LNAV/VNAV NA below -15°C or above 54°C. Inop table does not apply to LPV all Cats. When local altimeter setting not received, use MCO altimeter setting and increase LPV DA to 360 feet; increase LNAV/VNAV DA to 548 feet and all visibilities 1/2 SM. Increase all MDAs 40 feet and LNAV visibility Cat C/D 1/2 SM, and Circling visibility Cat C 1/2 SM.

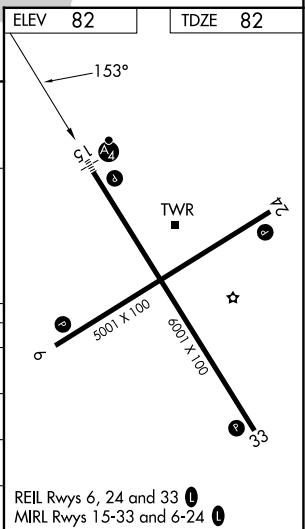
MALSF

MISSED APPROACH: Climb to 2200 direct YARTU and on track 221° to TEMPE and hold.

ATIS <b>128.775</b>	ORLANDO APP CON <b>119.4 351.9</b>	KISSIMMEE TOWER ★ <b>124.45 (CTAF) 0</b>	GND CON <b>121.7</b>	UNICOM <b>122.95</b>
------------------------	---------------------------------------	---------------------------------------------	-------------------------	-------------------------



	ELEV 82	TDZE 82		
	2200	YARTU tr 221°	TEMPE	
WERPO	2000	153°	1200	
GP 3.00° TCH 51	6.1 NM	2.1 NM	1.2 NM to RW15	
CATEGORY	A	B	C	D
LPV DA		332-3/4	250 (300-3/4)	
LNAV/VNAV DA		520-1	438 (500-1)	
LNAV MDA	520-3/4	438 (500-3/4)	520-1 1/4 438 (500-1 1/4)	520-1 1/2 438 (500-1 1/2)
CIRCLING	680-1	598 (600-1)	680-1 1/2 598 (600-1 1/2)	700-2 618 (700-2)



SE-3, 11 JUN 2026 to 09 JUL 2026

SE-3, 11 JUN 2026 to 09 JUL 2026