

LOC I- <b>STC</b>	APP CRS	Rwy Ldg	<b>7000</b>
<b>111.9</b>	<b>313°</b>	TDZE	<b>1020</b>
		Apt Elev	<b>1031</b>

# ILS or LOC RWY 31

ST CLOUD SKY CENTRAL (STC)

**DME required.**

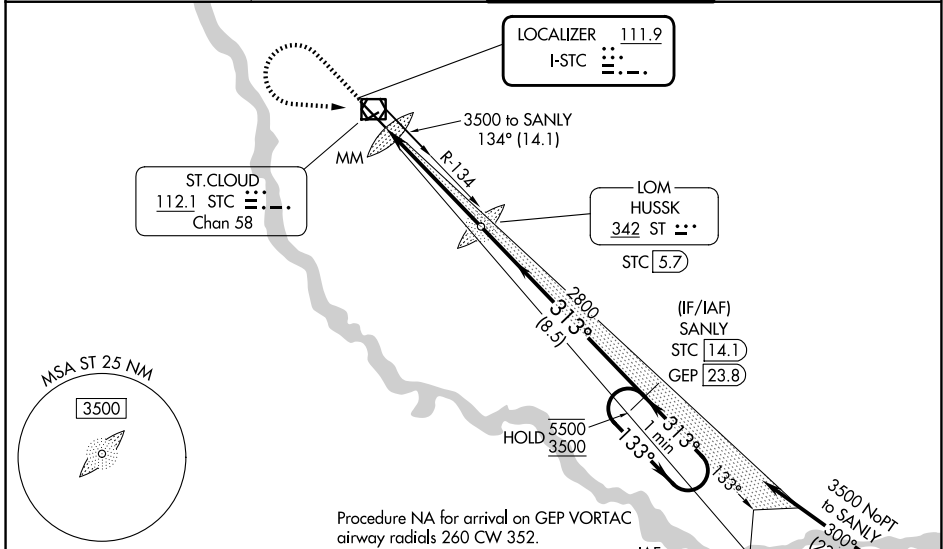
**NA** When local altimeter setting not received, use Little Falls altimeter setting, increase DA to 1296 feet, increase all MDAs 80 feet and S-LOC 31 visibility Cats C and D ¼ SM, and Circling visibility Cats C and D ¼ SM. For inop ALS when using Little Falls altimeter setting, increase S-ILS-31 visibility to ¾ SM and S-LOC-31 Cats C and D visibility to 1 ¾ SM. VDP NA when using Little Falls altimeter setting. DME from STC VOR/DME. DME use requires simultaneous reception of I-STC and STC DME.

**MALS R**

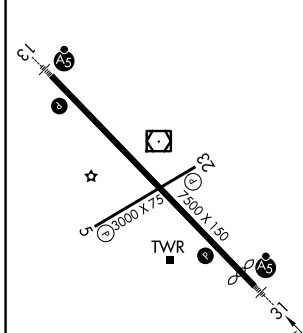
**AS**

**MISSED APPROACH:** Climb to 2800 then climbing left turn to 3500 direct STC VOR/DME and on STC VOR/DME R-134 to SANLY/STC VOR/DME 1.4.1 DME and hold.

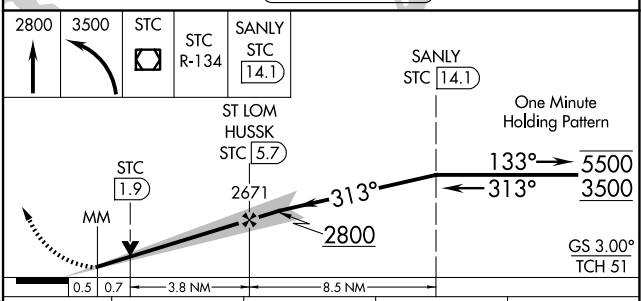
<b>ATIS</b> <b>119.375</b>	<b>MINNEAPOLIS CENTER</b> <b>121.05 235.775</b>	<b>ST. CLOUD TOWER *</b> <b>118.25 (CTAF) 0</b>	<b>GND CON</b> <b>123.75</b>
-------------------------------	----------------------------------------------------	----------------------------------------------------	---------------------------------



ELEV 1031	<b>D</b>	TDZE 1020
-----------	----------	-----------



MIRL Rwy 5-23	HIRL Rwy 13-31				
FAF to MAP 5 NM					
Knots	60	90	120	150	180
Min:Sec	5:00	3:20	2:30	2:00	1:40



CATEGORY	A	B	C	D
S-ILS 31	1220-½		200 (200-½)	
S-LOC 31	1460-½ 440 (500-½)		1460-¾ 440 (500-¾)	
CIRCLING	1500-1 469 (500-1)		1620-1½ 1860-2¾ 589 (600-1½) 829 (900-2¾)	

NC-1, 11 JUN 2026 to 09 JUL 2026

NC-1, 11 JUN 2026 to 09 JUL 2026