

WAAS CH <b>82013</b>	APP CRS <b>133°</b>	Rwy Ldg TDZE Apt Elev	<b>7000</b> <b>1031</b> <b>1031</b>
<b>W13A</b>			

# RNAV (GPS) RWY 13

ST CLOUD SKY CENTRAL (STC)

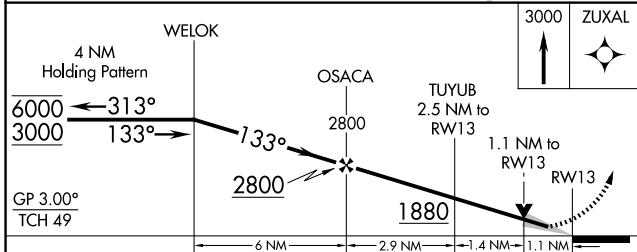
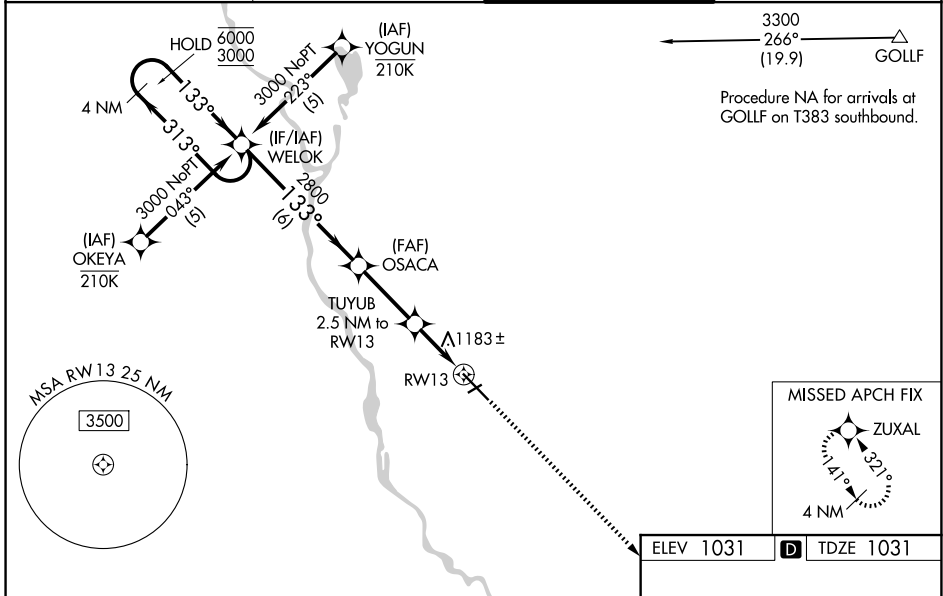
RNP APCH - GPS.

**⚠** Baro-VNAV and VDP NA when using Little Falls altimeter setting. For uncompensated Baro-VNAV systems, LNAV/VNAV NA below -21°C or above 54°C. When local altimeter setting not received, use Little Falls altimeter setting, increase LPV DA to 1307 feet; increase LNAV/VNAV DA to 1516 feet and all visibilities ¼ SM; increase all MDAs 80 feet and LNAV visibility Cat C and D ¼ SM, and Circling visibility Cat C and D ¼ SM. For inop ALS, increase LNAV/VNAV visibility all Cats and LNAV Cat C and D visibility to 1½ SM. When local altimeter not received and ALS inop, increase LPV visibility all Cats to ¾ SM, LNAV/VNAV visibility all Cats and LNAV Cat C and D to 1¾ SM.



MISSED APPROACH:  
Climb to 3000 direct  
ZUXAL and hold.

ATIS <b>119.375</b>	MINNEAPOLIS CENTER <b>121.05 235.775</b>	ST. CLOUD TOWER ★ <b>118.25 (CTAF) 0</b>	GND CON <b>123.75</b>
------------------------	---	---	--------------------------



ELEV 1031	<b>D</b> TDZE 1031																		
<table border="1"> <tr> <td>LPV DA</td> <td>1231-½</td> <td>200 (200-½)</td> </tr> <tr> <td>LNAV/VNAV DA</td> <td>1440-¾</td> <td>409 (500-¾)</td> </tr> <tr> <td>LNAV MDA</td> <td>1440-½</td> <td>409 (500-½)</td> <td>1440-¾</td> <td>409 (500-¾)</td> </tr> <tr> <td>CIRCLING</td> <td>1500-1</td> <td>469 (500-1)</td> <td>1620-1½</td> <td>589 (600-1½)</td> <td>1860-2¾</td> <td>829 (900-2¾)</td> </tr> </table>		LPV DA	1231-½	200 (200-½)	LNAV/VNAV DA	1440-¾	409 (500-¾)	LNAV MDA	1440-½	409 (500-½)	1440-¾	409 (500-¾)	CIRCLING	1500-1	469 (500-1)	1620-1½	589 (600-1½)	1860-2¾	829 (900-2¾)
LPV DA	1231-½	200 (200-½)																	
LNAV/VNAV DA	1440-¾	409 (500-¾)																	
LNAV MDA	1440-½	409 (500-½)	1440-¾	409 (500-¾)															
CIRCLING	1500-1	469 (500-1)	1620-1½	589 (600-1½)	1860-2¾	829 (900-2¾)													
MIRL Rwy 5-23 <b>0</b> HIRL Rwy 13-31 <b>0</b>																			

NC-1, 11 JUN 2026 to 09 JUL 2026

NC-1, 11 JUN 2026 to 09 JUL 2026