

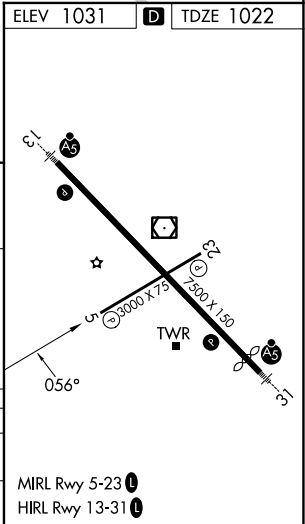
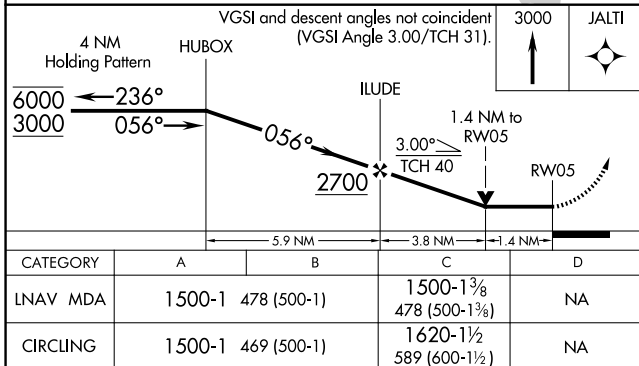
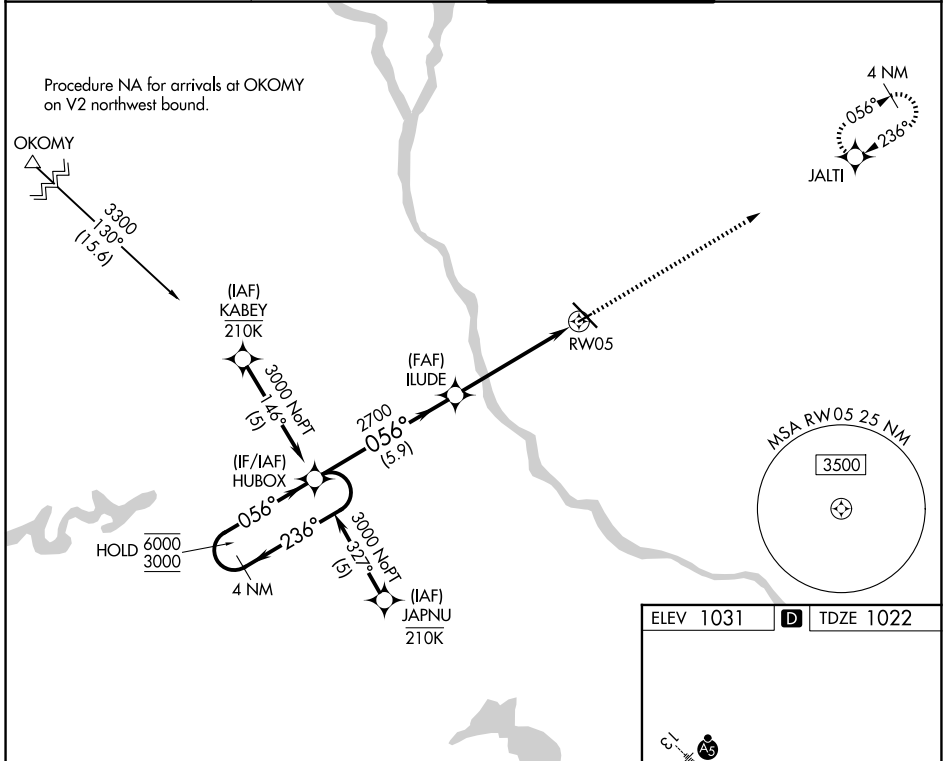
APP CRS	Rwy Ldg	<b>3000</b>
<b>056°</b>	TDZE	<b>1022</b>
	Apt Elev	<b>1031</b>

# RNAV (GPS) RWY 5

ST CLOUD SKY CENTRAL (STC)

RNP APCH - GPS.	<p><b>⚠</b> Rwy 5 helicopter visibility reduction below 3/4 SM NA. When local altimeter setting not received, use Little Falls altimeter setting, increase all MDAs 80 feet and LNAV visibility Cat C 1/4 SM. VDP NA when using Little Falls altimeter setting.</p>	<p>MISSED APPROACH: Climb to 3000 direct JALTI and hold.</p>

ATIS <b>119.375</b>	MINNEAPOLIS CENTER <b>121.05 235.775</b>	ST. CLOUD TOWER * <b>118.25 (CTAF) 0</b>	GND CON <b>123.75</b>
------------------------	---	---	--------------------------



NC-1, 11 JUN 2026 to 09 JUL 2026

NC-1, 11 JUN 2026 to 09 JUL 2026