

WAAS CH <b>97603</b> <b>W14A</b>	APP CRS <b>135°</b>	Rwy Ldg TDZE Apt Elev	<b>6021</b> <b>327</b> <b>327</b>
--	------------------------	-----------------------------	---

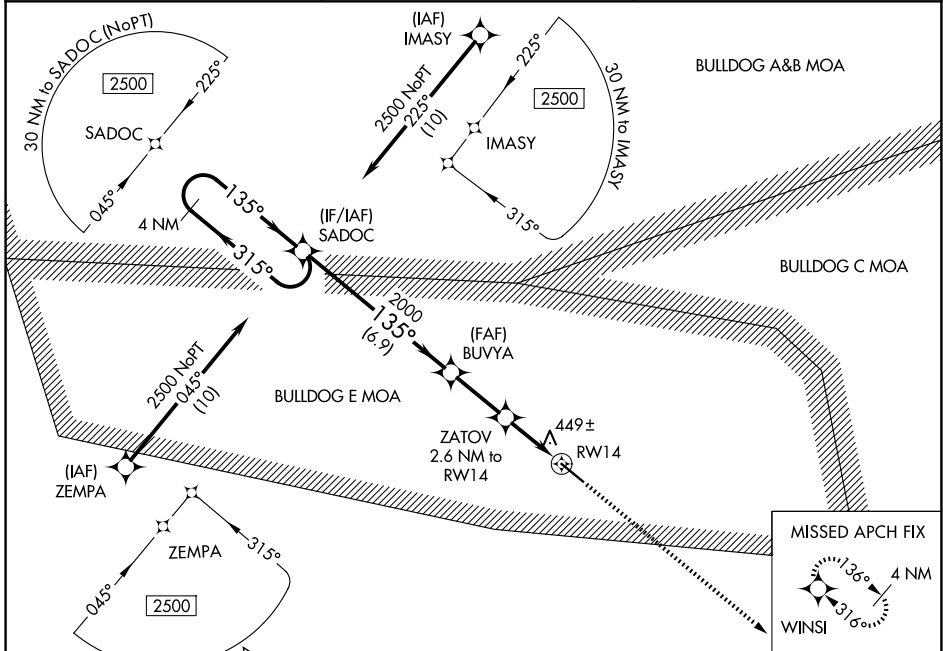
# RNAV (GPS) RWY 14

EAST GEORGIA RGNL (SBO)

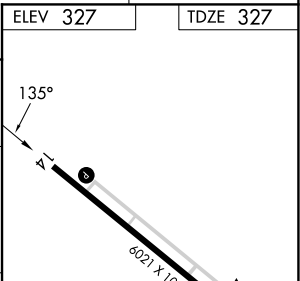
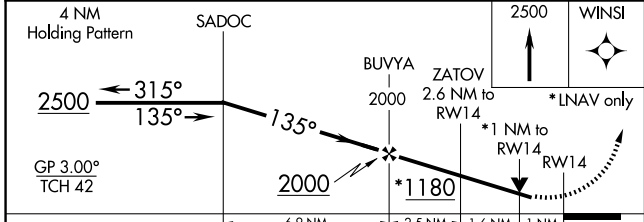
**▼** Baro-VNAV and VDP NA when using Vidalia altimeter setting. For uncompensated Baro-VNAV systems, LNAV/VNAV NA below -15°C (5°F) or above 54°C (130°F). When local altimeter setting not received, use Vidalia altimeter setting and increase LPV DA to 708 feet, LNAV/VNAV DA to 698 feet, and all MDA 80 feet; increase LPV and LNAV/VNAV all Cats visibility ¼ SM, LNAV Cats C/D visibility ⅓ SM, and Circling Cats C/D visibility ¼ SM. Rwy 14 helicopter visibility reduction below ¾ SM NA. DME /DME RNP-0.3 NA.

**MISSED APPROACH:**  
Climb to 2500 direct WINSI and hold.

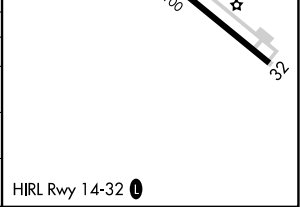
AWOS-3 <b>133.375</b>	ATLANTA CENTER <b>127.95 343.75</b>	UNICOM <b>122.975 (CTAF) 0</b>
--------------------------	--	-----------------------------------



ELEV 327	TDZE 327
----------	----------



CATEGORY	A	B	C	D
LPV DA		643-1	316 (400-1)	
LNAV/VNAV DA		633-1	306 (400-1)	
LNAV MDA		700-1	373 (400-1)	
CIRCLING	900-1 573 (600-1)	920-1 593 (600-1)	1000-2 673 (700-2)	1000-2¼ 673 (700-2¼)



SE-4, 11 JUN 2026 to 09 JUL 2026

SE-4, 11 JUN 2026 to 09 JUL 2026