

| | | | |
|--|------------------------|-----------------------------|---|
| WAAS CH 72938 W19A | APP CRS 191° | Rwy Ldg TDZE Apt Elev | 4802 356 358 |
|--|------------------------|-----------------------------|---|

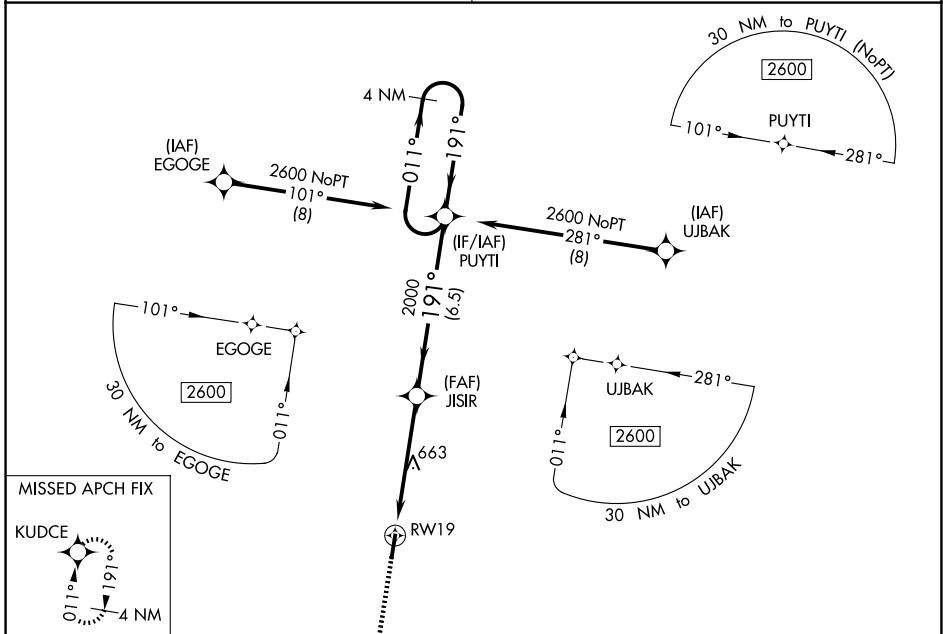
RNAV (GPS) RWY 19

GIBSON COUNTY (TGC)

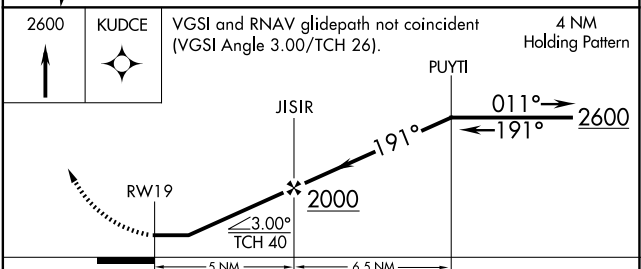
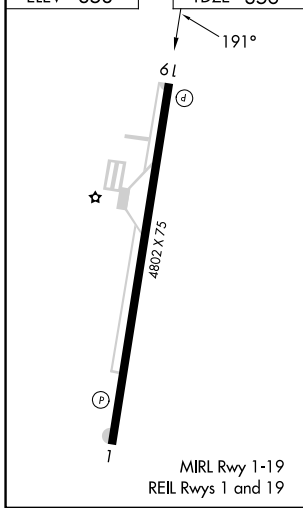
▼ Night landing: Rwy 19 NA. DME/DME RNP-0.3 NA. Helicopter visibility reduction below 1 SM NA. Obtain local altimeter setting on CTAF; when not received use **▲ NA** Jackson Rgnl altimeter setting and increase all MDA 60 feet, increase Circling Cat C visibility ¼ mile.

MISSED APPROACH: Climb to 2600 direct KUDCE and hold.

| | |
|--|-------------------------------|
| MEMPHIS CENTER 134.65 316.15 | UNICOM 122.8 (CTAF) |
|--|-------------------------------|



| | |
|----------|----------|
| ELEV 358 | TDZE 356 |
|----------|----------|



| CATEGORY | A | B | C | D |
|----------|-------|-------------|---|--|
| LP MDA | 920-1 | 564 (600-1) | 920-1 ⁵ / ₈ | 564 (600-1 ⁵ / ₈) |
| LNAV MDA | 940-1 | 584 (600-1) | 940-1 ³ / ₄ | 584 (600-1 ³ / ₄) |
| CIRCLING | 980-1 | 622 (700-1) | 980-1 ³ / ₄ 622 (700-1 ³ / ₄) | 1780-3 1422 (1500-3) |

SE-1, 11 JUN 2026 to 09 JUL 2026

SE-1, 11 JUN 2026 to 09 JUL 2026